

HIMSS[®] 16

Conference & Exhibition

FEB 29 – MAR 4, 2016 | LAS VEGAS

TRANSFORMING
HEALTH THROUGH IT



The Sequoia Project eHealth Exchange & RSNA Image Share Validation Programs

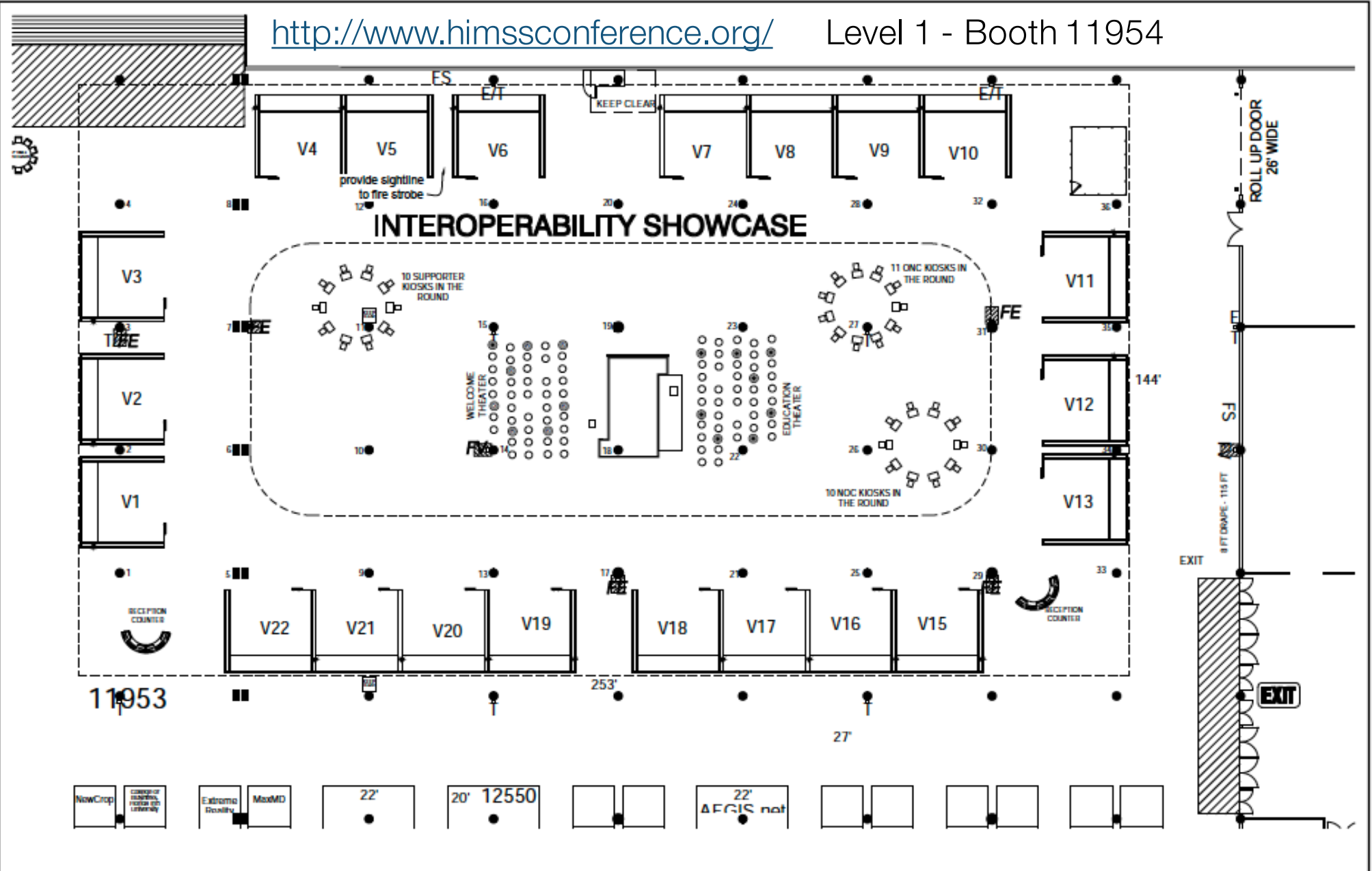
Didi Davis, Testing Programs Director

DISCLAIMER: The views and opinions expressed in this presentation are those of the author and do not necessarily represent official policy or position of HIMSS.

 #HIMSS16

www.himssconference.org





INTEROPERABILITY SHOWCASE

HALL G | LEVEL 1
SANDS EXPO CENTER

HIMSS 2016
MARCH 1 - 3, 2016

REVISED DATE:	1/7/2016
REVISED BY:	IG
Passport Line Item:	331321



FREEMAN

EVERY EFFORT HAS BEEN MADE TO ENSURE THE ACCURACY OF ALL INFORMATION CONTAINED ON THIS FLOOR PLAN. HOWEVER, NO WARRANTIES, EITHER EXPRESSED OR IMPLIED, ARE MADE WITH RESPECT TO THIS FLOOR PLAN. IF THE LOCATION OF BUILDING COLUMNS, UTILITIES OR OTHER ARCHITECTURAL COMPONENTS OF THE FACILITY IS A CONSIDERATION IN THE CONSTRUCTION OR USAGE OF AN EXHIBIT, IT IS THE SOLE RESPONSIBILITY OF THE EXHIBITOR TO PHYSICALLY INSPECT THE FACILITY TO VERIFY ALL DIMENSION AND LOCATIONS. © COPYRIGHT 2007, FREEMAN. ALL RIGHTS RESERVED.



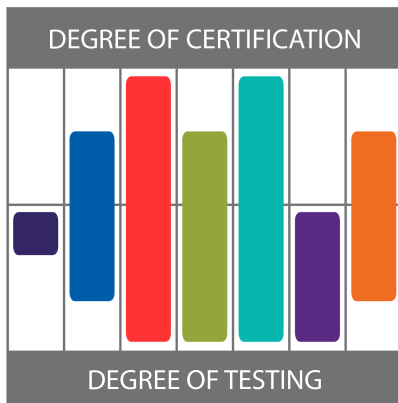
the
sequoia
project



www.sequoiaproject.org



Approve & Monitor
Validate



Comparison chart of rigor and testing

Scope of Testing and Certification Activities

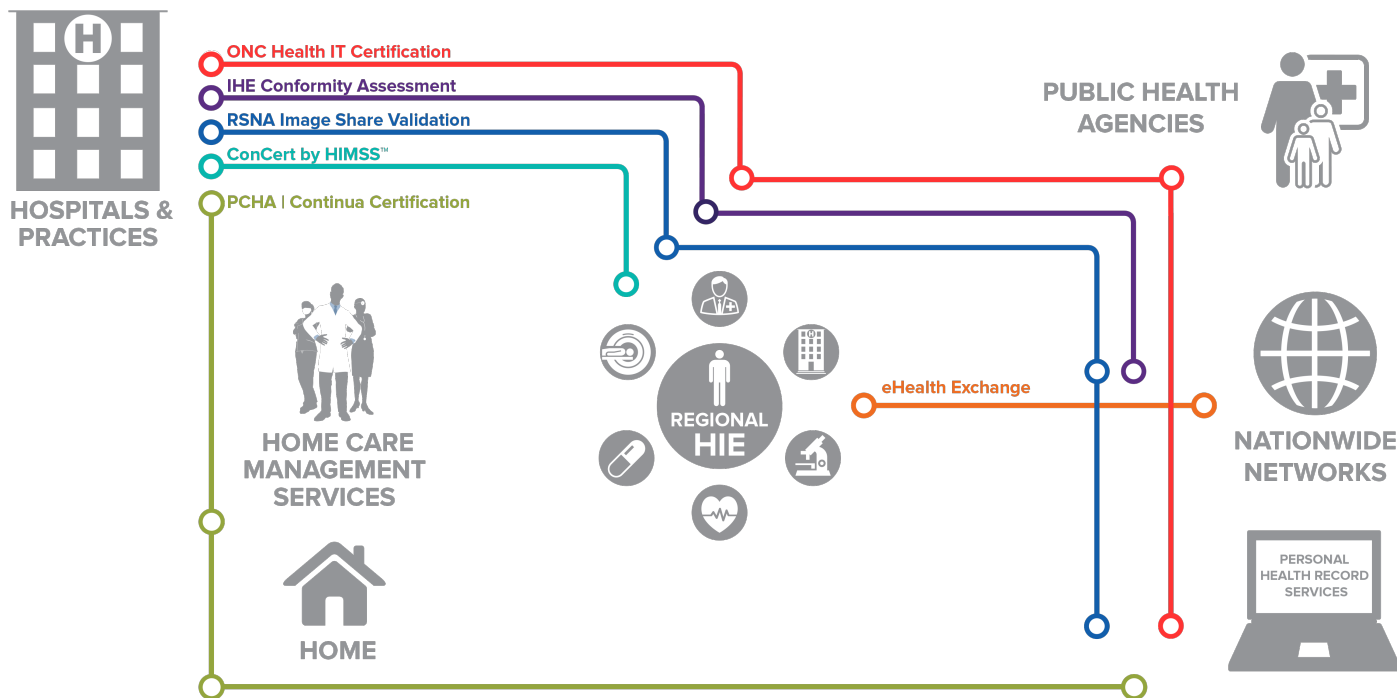
- Some programs based on ISO/IEC 17025 (for Testing) and/or ISO/IEC 17065 (for Certification)
 - Provides the highest rigor + international recognition
- Test results published for transparency & industry use

#HIMSS16

Legend

- IHE Connectathons
- RSNA Image Share Validation
- ONC Health IT Certification
- PCHA | Continua Certification
- ConCert by HIMSS™
- IHE Conformity Assessment
- eHealth Exchange™

IHE Connectathons



The Sequoia Project & eHealth Exchange Initiative

#HIMSS16



Shared Governance and Trust Agreement

Common Standards, Specifications & Policies

Largest Health Information Exchange Network in the U.S.

10 Years of Progress



Today, the eHealth Exchange connects:

- All 50 states 
- Four federal agencies (DoD, VA, HHS including CMS, and SSA) 
- 30% of U.S. hospitals 
- 10,000 medical groups 
- 900+ dialysis centers 
- 8,200 pharmacies 
- Supporting more than 100 million patients 

HIMSS 16

<http://sequoiaproject.org/ehealth-exchange/participants/>

©HIMSS 2016

eHealth Exchange Scope & Deployment

<http://sequoiaproject.org/ehealth-exchange/testing-overview>



Vendor	Validated Product	Vendor	Validated Product
	Clinical Exchange Platform		InterSystems HEALTHSHARE™
	Care Everywhere (2012, 2014, 2015)		Network v5 and v7
	Greenway Exchange		Optum HIE 2.0
	CareAlign 3.0		Exchange Gateway v3

eHealth Exchange Validation Programs

Participant Testing Program

- Enables organizations wishing to participate in the eHealth Exchange network to validate the compliance of their implemented HIT with the eHealth Exchange Performance and Service Specifications

Product Testing Program

- Focus on compliance and interoperability testing
- Reduces cost and burden for participants to onboard by approximately 50%
- Minimizes the level of vendor / developer support of providers / HIOs onboarding
- Reduces risk of interoperability issues being introduced into production, including the cost and burden of fixing interoperability issues and deploying patches

<http://sequoiaproject.org/resources/rsna-image-share-validation-program/>

Scope of Testing:

RSNA Image Share Validation

- Fills a national Standards Gap
 - Aligns with International Conformity Assessment
- IHE profiles provide the basis
- Modular
 - Cross-Enterprise Document Sharing for Imaging (XDS-I)
 - Document Source and Document Consumer
 - Registry and Repository
 - Cross-Community Access for Imaging (XCA-I)
 - RSNA Image Share PHR

Deployed Network Usage:

Image Share Network

- 11 radiology centers currently enrolling patients in the network
- Up to 20 more sites scheduled directly through RSNA
- Vendors are implementing the RSNA Image Share Edge application through their own Edge appliances (several hundred sites)
- As of January 30, 2016
 - Exams – 95,149
 - Images- 20,932,780 (assume 220 images/exam)
 - Patients- 22,776
 - 6073 of those patients have created personal health record accounts and accessed their images