

eHealth ExchangeTM

All Participant Call

Jeff Zucker – ADVault

Mike Yackanich

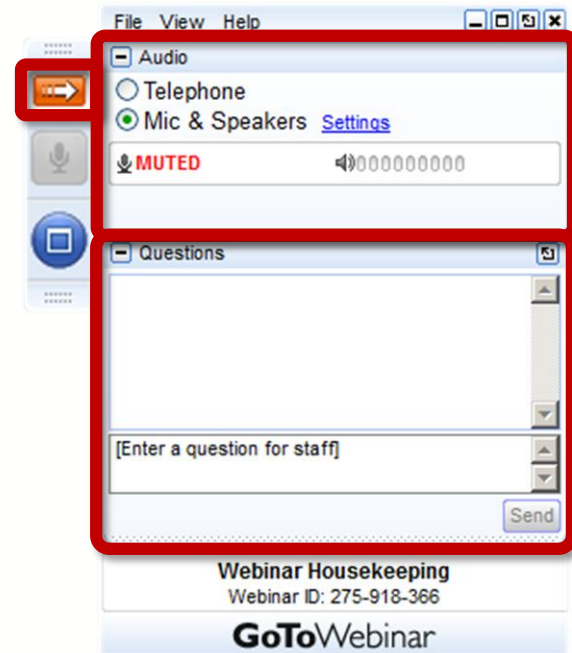
Kati Odom-Bell

Jay Nakashima

Mike McCune

Eric Heflin

How Do I Participate?



Your Participation

Open and close your control panel

Join audio:

- Choose "Mic & Speakers" to use VoIP
- Choose "Telephone" and dial using the information provided

Submit questions and comments via the Questions panel

Note: Today's presentation is being recorded and will be provided within 48 hrs

Problems or Questions? Contact Dawn Van Dyke
dvandyke@sequoiaproject.org or 703.864.4062

Today's Topics

1. New Participants	Kati Odom-Bell or Jay Nakashima
2. ADVault (MyDirectives.com)	Jeff Zucker
3. Carequality Update	Mike McCune
4. Hub Update	Mike Yackanich or Jay Nakashima
5. Pre-fetch Volume Increase	Eric Heflin
6. How to Engage	Eric Heflin



New Participants

eHealth ExchangeTM

Congratulations to our newest Participants!

1. PULSE COVID-19
2. MyDirectives (ADVault)
3. CRISP (existing Participant on new platform)



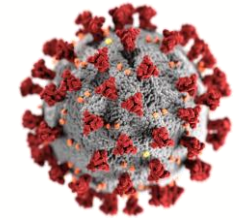
Committed to Improving Patient Care via Data Exchange



ADVault (MyDirectives.com)

eHealth ExchangeTM

MyDirectives (ADVault)



- Universal Advance Digital Directive
- Decisions (patients' values & treatment goals)
- Healthcare Agents (who patient has authorized to make decisions)

Now is the time to create a plan.

Create your own care plans at MyDirectives.com for free so physicians & family can implement your decisions.

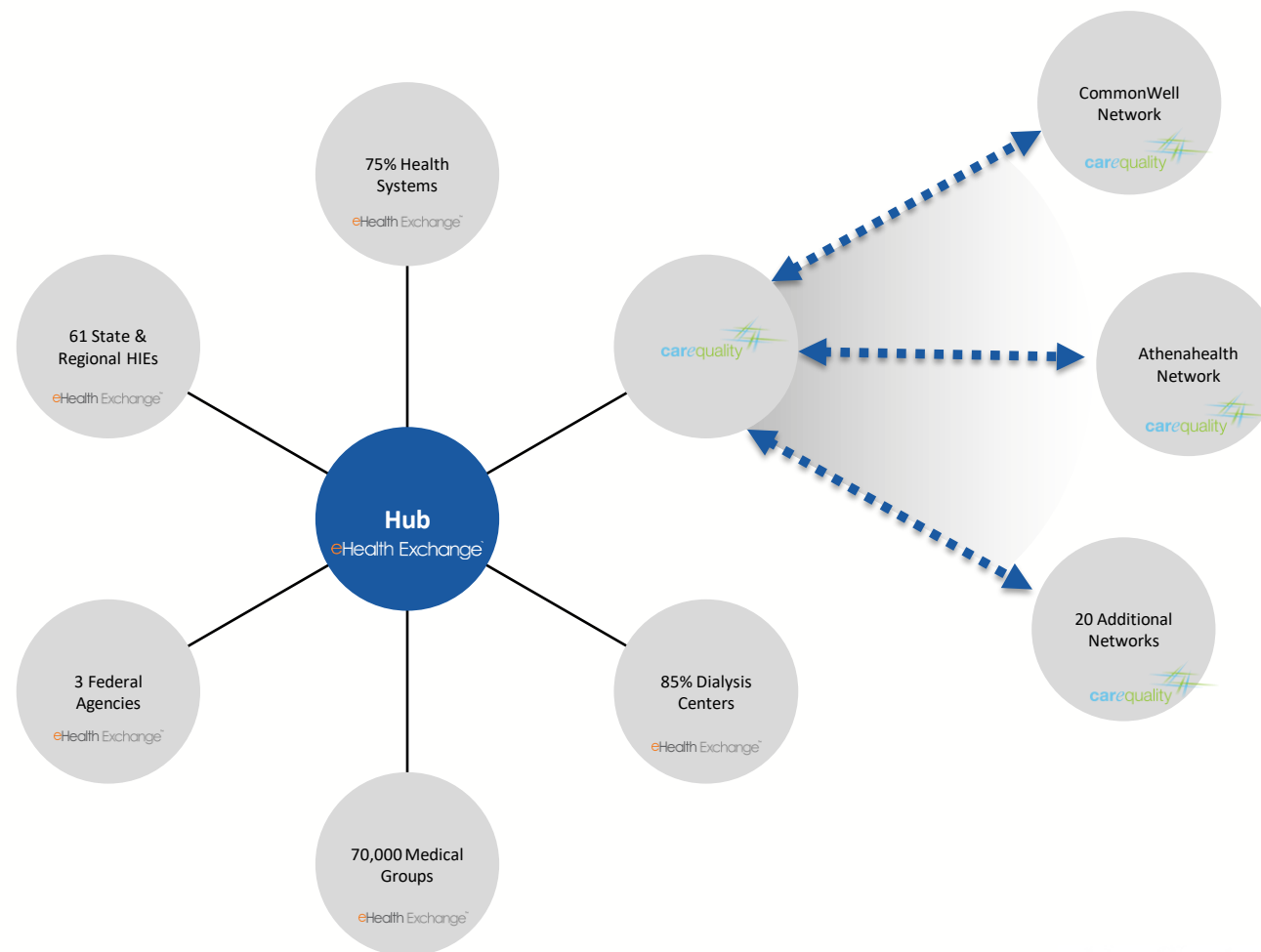


Carequality Update

eHealth ExchangeTM

Carequality Exchange Option

- Expand reach
- Lower connectivity expense
- Speed to market
- Improve patient care

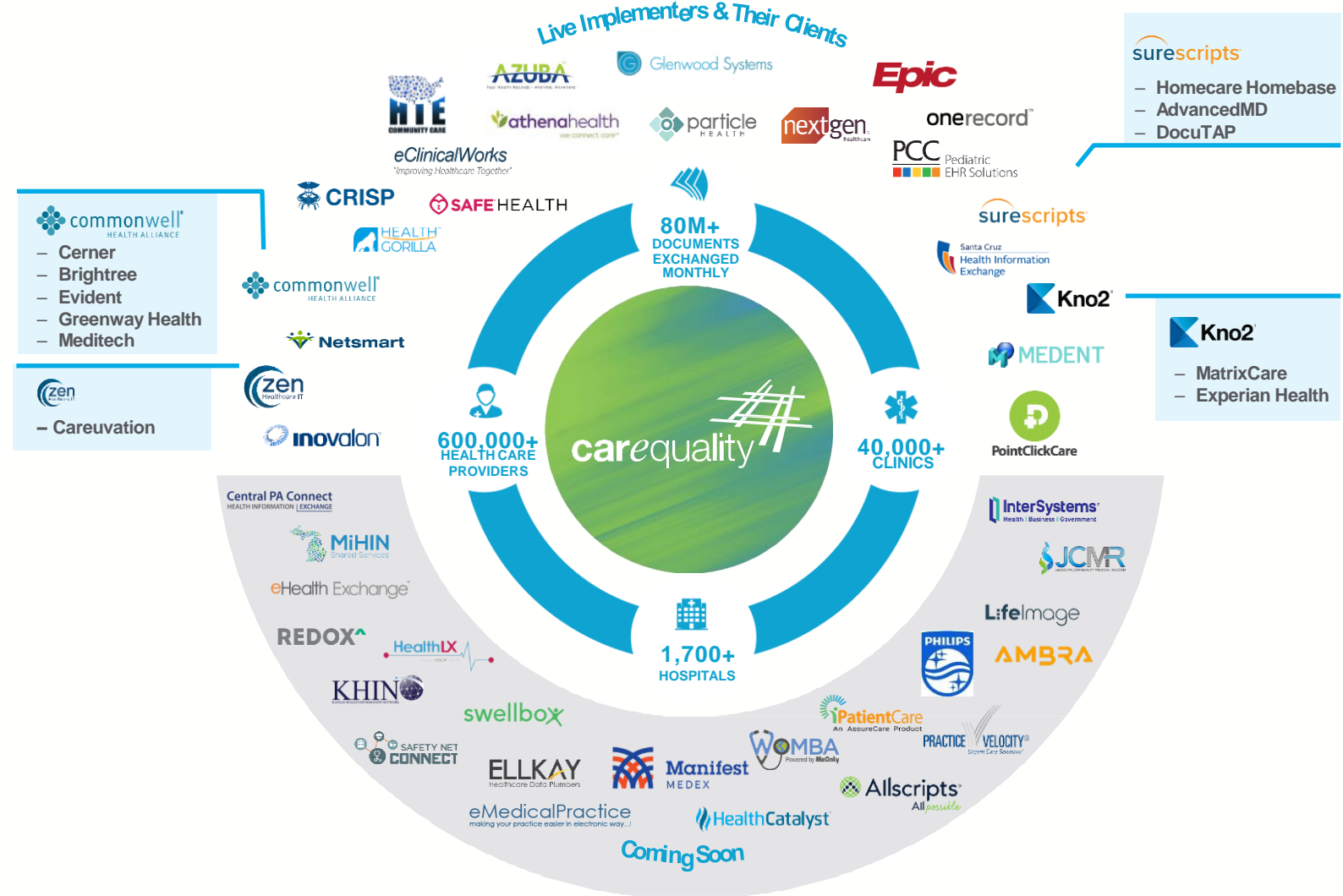


What is Carequality?

It's a framework, but not a network

- Technical & policy agreements
- Governing structure
- Federated architecture

Enables providers using a Carequality-enabled network (e.g. athenahealth, CommonWell, & eHealth Exchange) to exchange patient data with providers in other Carequality-enabled networks.



23+ Participants Will Exchange with Carequality

1. California HIE
2. South Country Health Alliance
3. Florida HIE
4. Rhode Island Quality Institute (RIQI)
5. Manifest MedEx
6. KONZA (formerly Kansas HIN)
7. North Dakota Health Information Network
8. healtheConnect Alaska
9. PHIX
10. SacValley MedShare
11. Guardian Health Services, LLC
12. My Medical Neighborhood Health Coalition
13. Iowa Health Information Network
14. Healthshare Exchange
15. Healthie Nevada
16. Keystone HIE
17. MedVirginia
18. Alabama's One Health Record (AL OHR)
19. Koble
20. PULSE
21. Advent Health
22. Atrium Health
23. DaVita

Carequality Timeline

- Early adopter Participants connecting now:
 - AdventHealth
 - Manifest MedEx
 - Atrium Health
 - PULSE (Audacious Inquiry)
- Broader Onboarding – Late May



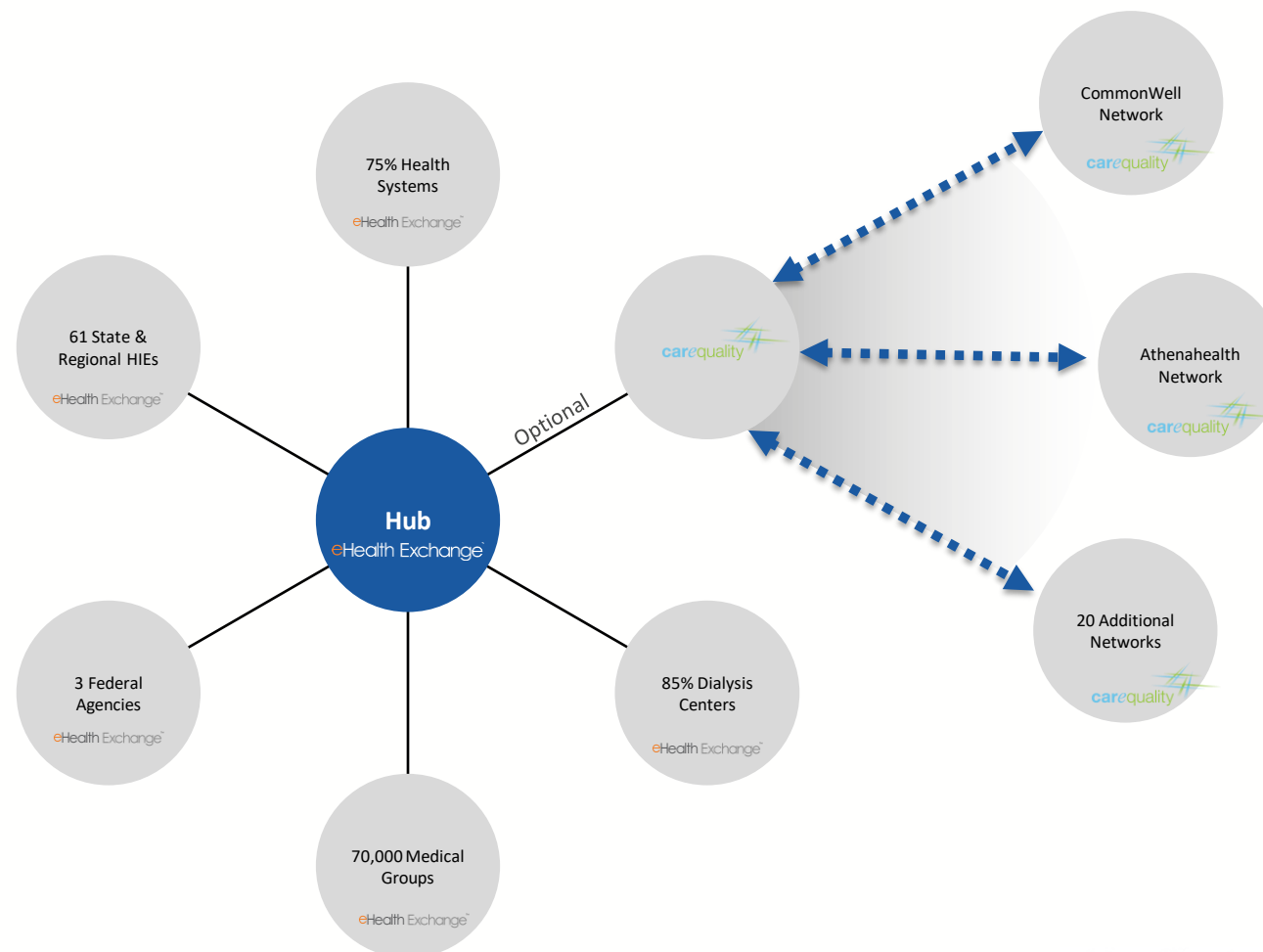
Hub Update

Your single connection with the nation

eHealth ExchangeTM

Who is Connected to the Hub

- 237 Participants live as Responders
- 124 Participants live as Initiators



Initiator Testing Approaches

1. Self-Service

- Recommended approach
- Send a patient discovery request using test patient to the Hub's test platform to hopefully receive patient "not found" response
- Detailed instructions: <https://ehealthexchange.org/onboarding/hub>

2. Initiator Group Testing Sessions

- Tuesdays 1:30-3 ET through April 28
- Thursdays 3-4 ET through April 30



Pre-Fetch Volume Increase

eHealth ExchangeTM

Pre-Fetch Volume Increase (Specific Dates Now Available)

- Pre-Fetch → automatically searching for patient records in batch mode, often the evening before scheduled appointments
- Performed by most eHealth Exchange Participants today
- Veterans Administration & DoD will begin pre-fetch:
 - Sunday 4/19/2020 at 7pm EST (~90K/night).
 - Sunday 4/26/2020 at @3am EST (~10K/night additional)
 - Sunday 5/3/2020 1am EST (~75K/night additional)
 - Then every night at 7pm EST (~175,000 requests per day to each partner)
 - This is in addition to traditional ad-hoc queries
- Notifications sent from VHA/DoD & eHealth Exchange asking for concerns

Since the number of appointments has been reduced due to COVID-19, we might start out seeing more like 30,000 queries nightly vs any of these numbers



Please Engage!

We'd love to hear from you

eHealth ExchangeTM

Technical Work Group

- Thursdays at 4-5pm ET, 4/2/2020 through 8/31/2020
- **Likely Topics:**
 1. Technical Specification Creation
 - a. Push notifications
 - b. Populating directory with hospital locations
 - c. Broadcast query
 - d. FHIR Directory
 - e. Consumer access
 - f. Carequality harmonization
 - g. Controlled Unclassified Information (CUI) Marking
 2. Testing
 3. Hub Updates
 4. Capacity planning [Final Thursday each month]

Please Attend:

- <https://zoom.us/j/5128970748>
- Meeting ID: 512 897 0748
- One tap mobile: +16699006833,,5128970748#
- Thursdays at 4-5pm ET, 4/2/2020 through 8/31/2020

How might I obtain additional information?

How	When	Where
1. Visit eHealth Exchange Web Site	Any time	https://ehealthexchange.org
2. Monthly Participant Web Meetings	Typically, the 3rd Thursday of Each Month at 1 pm ET	https://ehealthexchange.org/events
3. Weekly Technical Workgroup	Thursdays 4-5 ET (April through August+)	https://ehealthexchange.org/events
3. Email	Any time if you have a specific question	administrator@ehealthexchange.org

Questions & Answers

Please e-mail questions or concerns to
administrator@ehealthexchange.org