

# eHealth Exchange<sup>TM</sup>

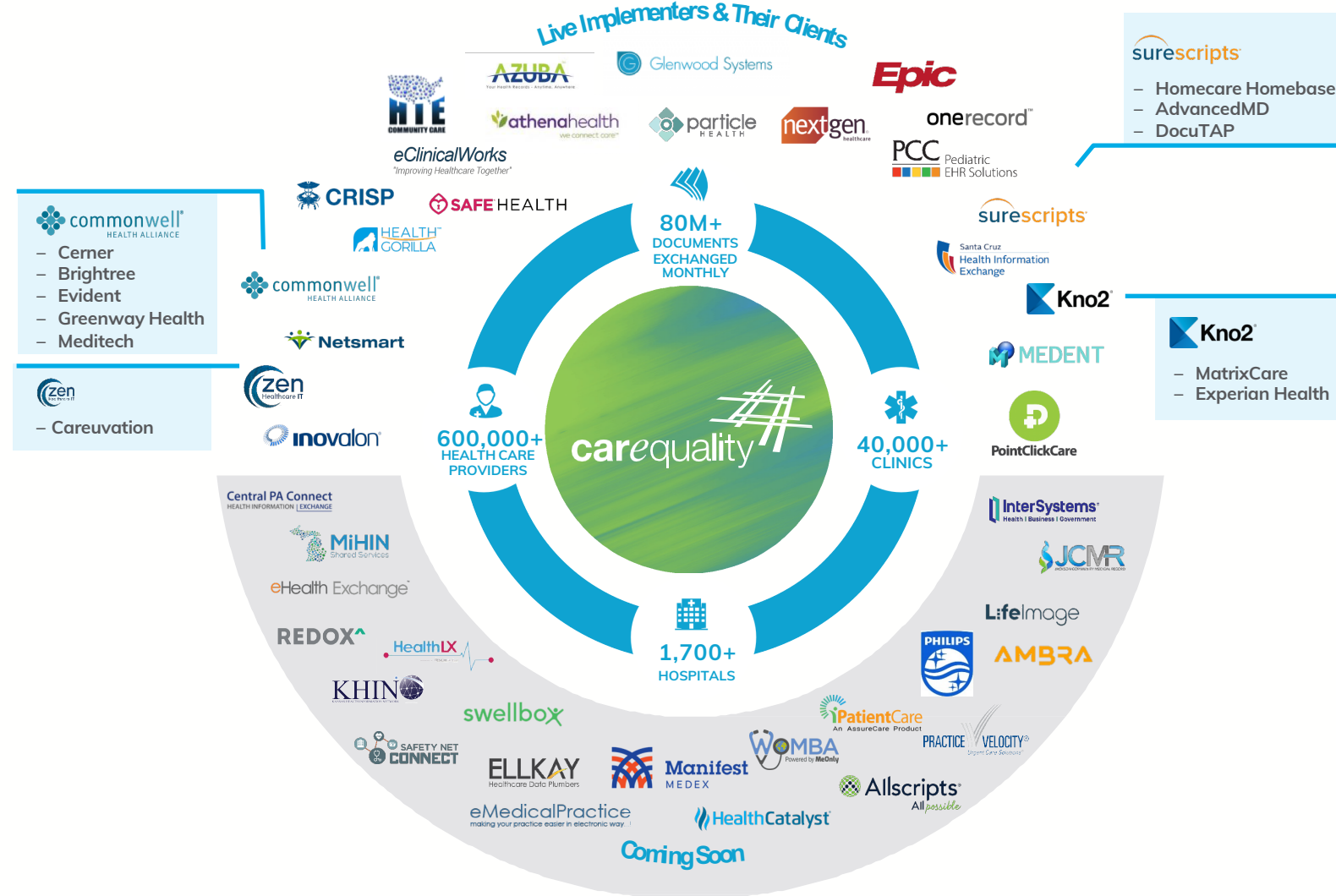
## Exchanging With Carequality via the eHealth Exchange

# What is Carequality?

It's a framework, but not a network

- Technical & policy agreements
- Governing structure
- Federated architecture

Enables providers using a Carequality-enabled network (e.g. athenahealth, CommonWell, & eHealth Exchange) to exchange patient data with providers in other Carequality-enabled networks.



## Which networks exchange via Carequality?

Over 20 data sharing networks are live on Carequality

An additional ~20 networks are planning to implement Carequality



## Which providers exchange via Carequality?

- To identify who exchanges via Carequality, visit <https://carequality.org/active-sites-search>.
- The eHealth Exchange has no additional information regarding who exchanges with the Carequality framework.



# What does the Carequality Active Search Map look like?

Search By State: No State

Search By Zip: 80210

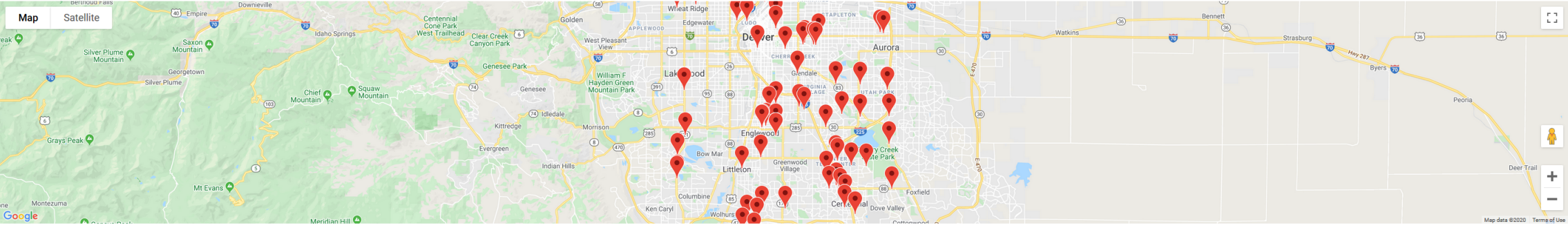
Radius: 10

CLEAR SEARCHES

SEARCH

Map

Satellite



Map data ©2020 Terms of Use

Organization Name	City	State
<a href="#">Centura Health</a>	Englewood	CO
<a href="#">Children's Hospital Colorado</a>	Aurora	CO
<a href="#">CLINICA TEPEYAC</a>	DENVER	CO
<a href="#">CO Brain &amp; Spine Institute</a>	ENGLEWOOD	CO
<a href="#">CO Infectious Disease Associates</a>	DENVER	CO
<a href="#">Colorado Center of Medical Excellence</a>	DENVER	CO
<a href="#">Colorado Health Network</a>	DENVER	CO
<a href="#">Davis, Jared</a>	LITTLETON	CO
<a href="#">DaVita Physician Solutions</a>	Denver	CO
<a href="#">Denver Health Medical Center</a>	Denver	CO

## What's changing?

### Before eHealth Exchange Connects with Carequality

Exchange with the eHealth Exchange's 270+ health systems, federal agencies, providers and provider collaboratives.

### Once eHealth Exchange Exchanges with Carequality

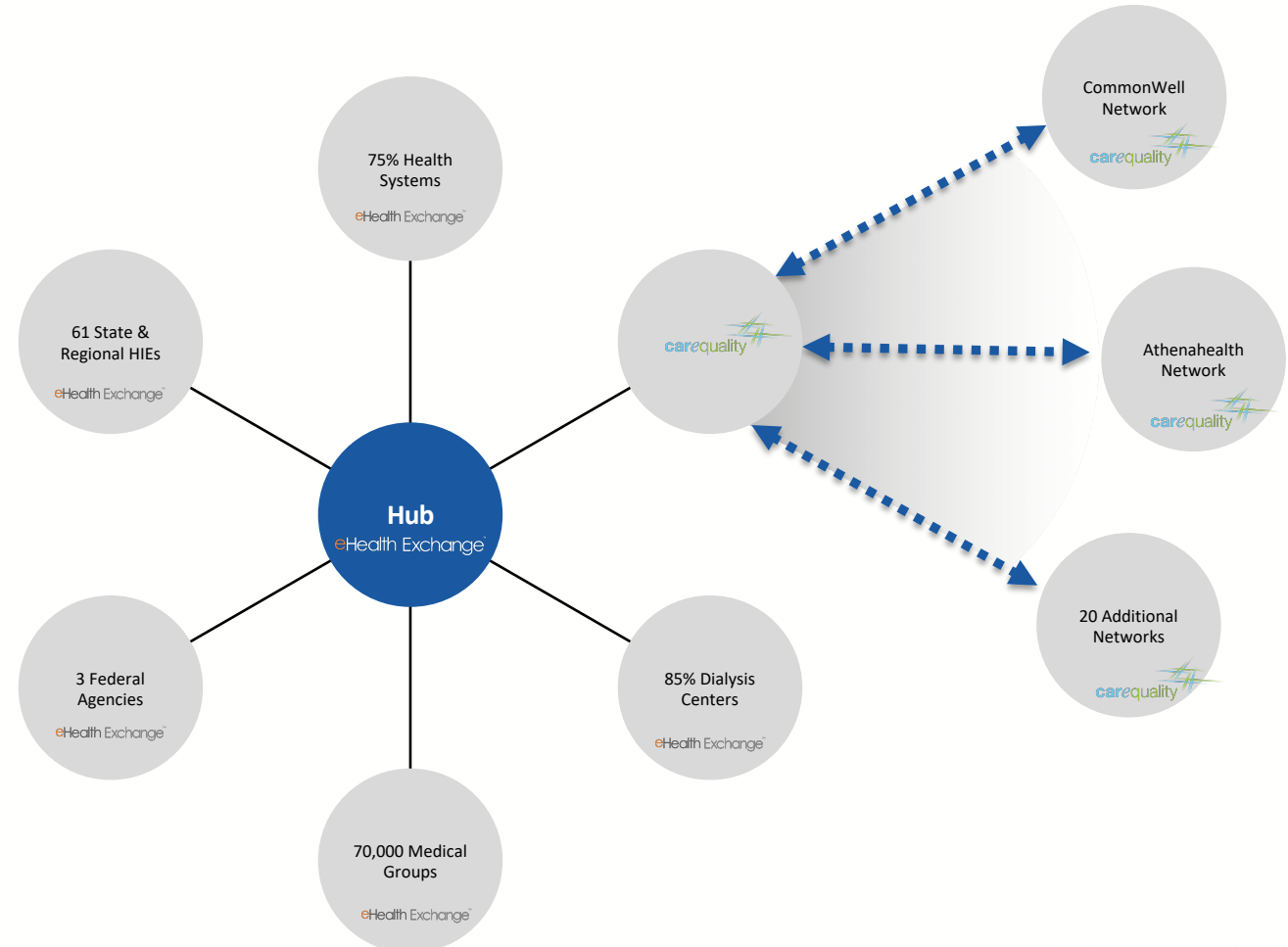
**Option** to also exchange with providers via Carequality's 20+ implementer networks

- athenahealth network
- eClinicalWorks network
- CommonWell Health Alliance network
- etc

If you do not notify [administrator@ehealthexchange.org](mailto:administrator@ehealthexchange.org) by 3/31/2020, your organization will be connected to the 20+ Carequality networks on 4/1/2020, and your organization will be charged the Carequality exchange fee

# Why is the eHealth Exchange offering me the ability to exchange with Carequality?

- Expand reach
- Lower connectivity expense
- Speed to market
- Improve patient care



# How is the eHealth Exchange different?

## eHealth Exchange

- ✓ Single technical connection instead of hundreds
- ✓ Vendor agnostic
- ✓ 24x7x365 monitoring
- ✓ Mandatory content testing
- ✓ Analytics dashboard
- ✓ Federal agency connectivity

## Other Networks

- ⚠ Single technical connection instead of hundreds
- ⚠ Vendor agnostic
- ⚠ 24x7x365 monitoring
- 🛑 Mandatory content testing
- ⚠ Analytics dashboard
- 🛑 Federal agency connectivity

- ✓ Yes
- ⚠ Sometimes
- 🛑 No



## What additional terms must my organization accept to exchange with Carequality ?

- If your organization exchanges with Carequality via the eHealth Exchange, your organization will be legally bound by the Carequality Connection Terms (<https://carequality.org/resources>) on 4/1/2020 or whenever your organization is connected.
- No signature is necessary since the DURSA will bind you to these terms if you do not opt-out

### Sample Term:

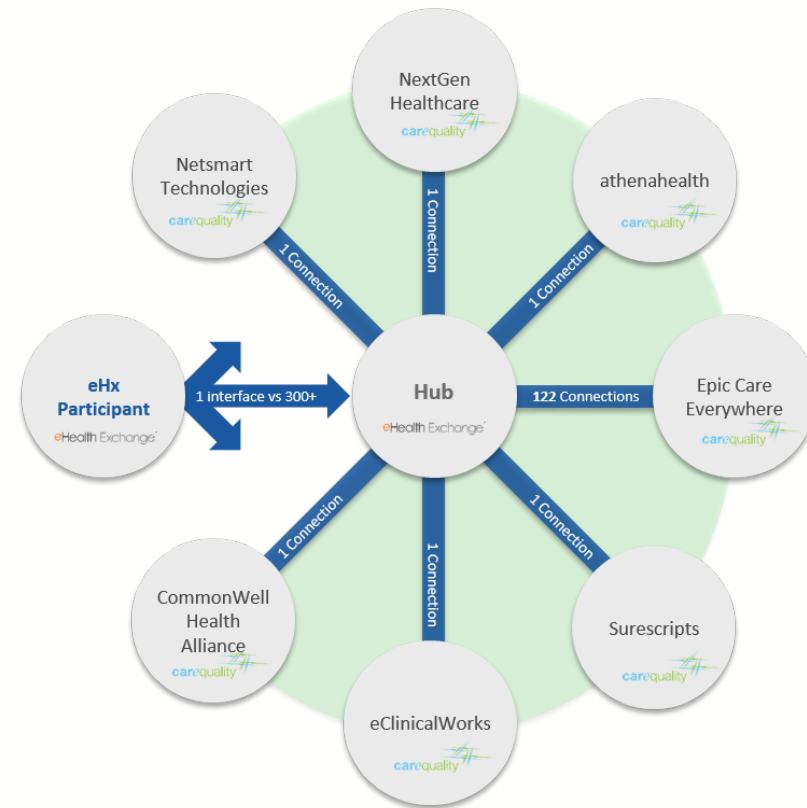
If your organization chooses to exchange with Carequality for Treatment, your organization may not discriminate with others using Carequality for Treatment. You must exchange with all others exchanging via Carequality for Treatment.

## How much additional volume should my I.T. team expect from Carequality?

- If your organization chooses to exchange with Carequality, your IT team should expect additional network traffic.
- The eHealth Exchange does not know how much that volume increase might be.
- Other healthcare organizations leveraging Carequality will only be querying your organization for specific patients they believe have likely been treated at your organization.

# How would the eHealth Exchange connect my organization to Carequality?

- The Hub would connect your organization to Carequality
- Your organization must consume the Hub-aware directory (phone book) to exchange with Carequality
  - FHIR version
  - SOAP version



## How much does the eHealth Exchange charge Providers & HIEs to exchange with Carequality?

- To minimize adoption impediments the eHealth Exchange is absorbing the vast majority of the expense to setup connectivity and then cover ongoing transaction expenses.
- These fees are in addition to fees paid today to exchange within the eHealth Exchange network.
- A separate fee schedule applies to Federal agencies.

Annual Health System, HIO, or Other Providers' Fee to Exchange With Carequality-Enabled Networks via eHealth Exchange	
Annual Revenue (or Annual Operating Expense for Government & Non-Profits)	Applies to Health Systems, HIOs, and other providers not already connected with Carequality who do not opt-out of Carequality connectivity:
> \$500 Million	\$13,500
\$100 Million to less than \$500 Million	\$12,500
\$10 Million to less than \$100 Million	\$9,500
\$1 Million to less than \$10 Million	\$5,500
Less than \$1 Million	\$2,500



# How much does the eHealth Exchange charge vendors & value-based care organizations to exchange with Carequality?

- To minimize adoption impediments the eHealth Exchange is absorbing the vast majority of the expense to setup connectivity and then cover ongoing transaction expenses.
- These fees are in addition to fees paid today to exchange within the eHealth Exchange network.
- A separate fee schedule applies to Federal agencies.

Annual Vendors' & Value-Based Care Organizations' Fee to Exchange <u>With</u> Carequality-Enabled Networks via eHealth Exchange	
Annual Revenue (or Annual Operating Expense for Government & Non-Profits)	Applies to Vendors & Payers not already connected with Carequality who do not opt-out of Carequality connectivity:
>\$10 billion	\$200,000
\$2.5-10 billion	\$100,000
\$1.5-2.5 billion	\$80,300
\$1-1.5 billion	\$66,000
\$700-999 million	\$54,588
\$500-699 million	\$99,550
\$250-499 million	\$81,125
\$150-249 million	\$68,200
\$100-149 million	\$28,050
\$75-99 million	\$24,050
\$50-74 million	\$17,050
\$25-49 million	\$14,163
\$10-24 million	\$10,450
\$5-9 million	\$7,288
\$2-4 million	\$4,675
<\$2 million	\$3,375

## What does my organization need to do and by when?

- Please notify [administrator@ehealthexchange.org](mailto:administrator@ehealthexchange.org) by 3/31/2020 if your organization does not wish to exchange with the 20+ Carequality-enabled networks via the eHealth Exchange on 4/1/2020.
- If your organization chooses to connect with Carequality via the eHealth Exchange, you do not need to do anything.

Unless you ask [administrator@ehealthexchange.org](mailto:administrator@ehealthexchange.org) by 3/31/2020 to not connect your organization to the 20+ Carequality networks, your Hub connection will connect your organization to the 20+ Carequality networks on 4/1/2020, and your organization will be charged the fees described.

## What if my organization changes its mind?

- If your organization notifies [administrator@ehealthexchange.org](mailto:administrator@ehealthexchange.org) by 3/31/2020 it does not wish to exchange with the 20+ Carequality-enabled networks via the eHealth Exchange, and it later changes its mind, simply notify [administrator@ehealthexchange.org](mailto:administrator@ehealthexchange.org).
- Or, if your organization does nothing and is connected to Carequality on 4/1/2020 and later decides it no longer desires to exchange via Carequality, simply notify [administrator@ehealthexchange.org](mailto:administrator@ehealthexchange.org).

Unless you ask [administrator@ehealthexchange.org](mailto:administrator@ehealthexchange.org) by 3/31/2020 to not connect your organization to the 20+ Carequality-enabled networks, your Hub connection will connect your organization to the all Carequality implementer networks on 4/1/2020, and your organization will be charged the fees described.

## How might the consideration of Carequality exchange be summarized?

Benefits	Additional Considerations
Beyond connecting to the eHealth Exchange's 200 health systems, 61 state & regional HIEs, 3 dialysis providers, and 4 federal agencies, you have the option of also exchanging with Carequality's 20+ implementer networks to expand your reach to additional acute care, ambulatory, behavioral health and other connections.	Additional eHealth Exchange fees to connect to Carequality via the eHealth Exchange
Your single Hub connection will connect you not only to eHealth Exchange Participants, but also to 20+ diverse Carequality-enabled networks.	If your organization chooses to exchange with Carequality, your IT team should expect additional network traffic. At this time, The eHealth Exchange does not know exactly how much that volume increase will be; however, our team is proactively working with participants to create estimations and develop ways to ease any burden to systems. Other healthcare organizations leveraging Carequality will only be querying your organization for specific patients they believe have likely been treated at your organization.
It improves patient care by increasing the number of well-coordinated care transitions.	
<b>No Selective Exchange for Treatment</b>	<b>No Selective Exchange for Treatment</b>
If your organization exchanges within Carequality for Treatment, others exchanging within Carequality for Treatment may <u>not</u> discriminate against you for Treatment.	If your organization exchanges within Carequality for Treatment, your organization may <u>not</u> discriminate with others using Carequality for Treatment. You must exchange with all others exchanging via Carequality for Treatment.
	If your organization exchanges with Carequality via the eHealth Exchange, your organization will be legally bound by the <b>Carequality Connection Terms</b> ( <a href="https://carequality.org/resources">https://carequality.org/resources</a> ) on 4/1/2020 or whenever your organization is connected.



## How might I obtain additional information?

How	When	Where
1. Visit Carequality Web Site	Any time	<a href="https://carequality.org">https://carequality.org</a>
2. Monthly Participant Web Meetings	Typically, the 3rd Thursday of Each Month at 1 pm ET	<a href="https://ehealthexchange.org/events">https://ehealthexchange.org/events</a>
3. Email	Any time if you have a specific question	<a href="mailto:administrator@ehealthexchange.org">administrator@ehealthexchange.org</a>