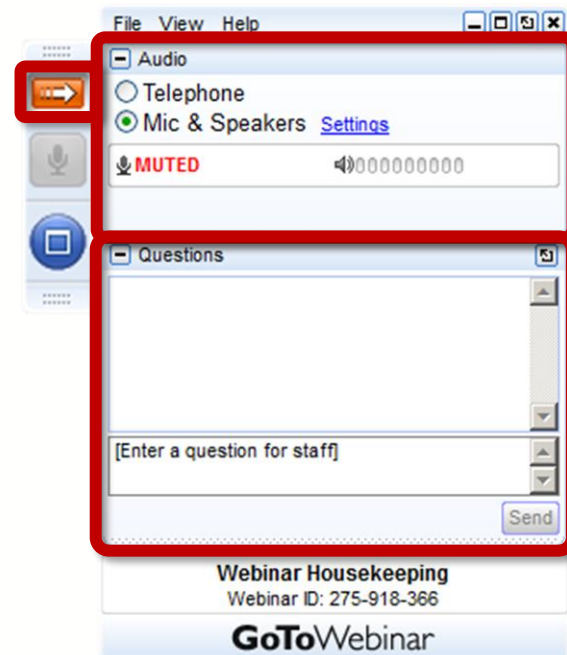


May 18<sup>th</sup>, 2023

# eHealth Exchange<sup>TM</sup>

## All Participant Call

# How Do I Participate?



## Your Participation

Open and close your control panel

Join audio:

- Choose "Mic & Speakers" to use VoIP
- Choose "Telephone" and dial using the information provided

Submit questions and comments via the Questions panel

**Note:** Today's presentation is being recorded and will be provided within 48 hrs

Problems or Questions? Contact Dawn Van Dyke  
[dvandyke@ehealthexchange.org](mailto:dvandyke@ehealthexchange.org) or 703.864.4062

## Today's Topics

1. New Participants	Mark Rogers
2. CC Elections	Pat Russell
3. Hub Firewall Change	Mike Yackanich
4. Trust Bundle Update	Michael McCune
5. FHIR Connectathon	John McBride
6. QHIN Update	Pat Russell
7. Events	Mark Rogers
8. Contacts & Operational Notices	Mark Rogers
9. Q&A	Everyone





# New Participants

eHealth Exchange<sup>TM</sup>

## Congratulations to our newest Participants!

- NOMS Healthcare
- New York-Presbyterian
- Document Storage Systems



Committed to Improving Patient Care via Data Exchange





# 2023 Election

Coordinating Committee Seats

eHealth Exchange<sup>TM</sup>

## 2023 Coordinating Committee (CC) Seats

	Representative	Term Date
HIO	Jaime Bland, RN	9/30/2025
	John Kansky	9/30/2023
	Pam Matthews	9/30/2024
IDN	Patti Cuartas, PA	9/30/2023
	Matt Eisenberg, MD	9/30/2025
	Open	9/30/2023
	Paul Matthews	9/30/2025
Other	Eric Liederman	9/30/2024
	Derek Plansky	9/30/2024

## 2023 Coordinating Committee (CC) Election Timeline

- Nominating Committee – TBD
- Announce elections during monthly All Participant – June and July
- July 14 - Email Participant notice for elections
- **July 17 – July 28 - Open for applications**
- July 31- August 4 - Nominating Committee Review Applications
- August 8 - Nominating Committee finalizes slate of nominees
- August 15 - Coordinating Committee approves slate of nominees
- **August 21-September 1 - Participants Vote**
- September 5-11 - Time for a runoff if needed
- Sept 19 - New Coordinating Committee Members shadow CC Call
- Sept 21 - Notice to Participants on monthly All Participant Call
- Sept 25 – October 13, Orientation
- **October 17- First New CC Member meeting**



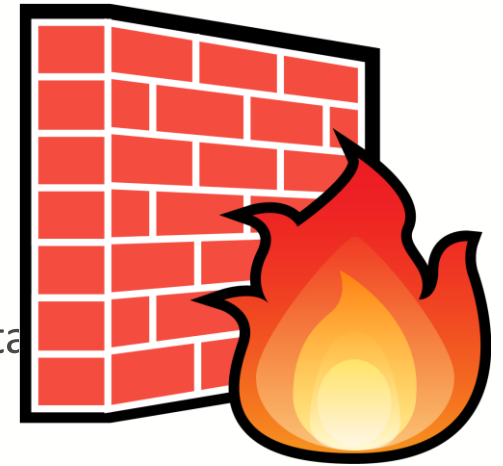


# Hub Firewall Change

eHealth Exchange<sup>TM</sup>

# Announcement: Hub Service Outage – LIVE Environment

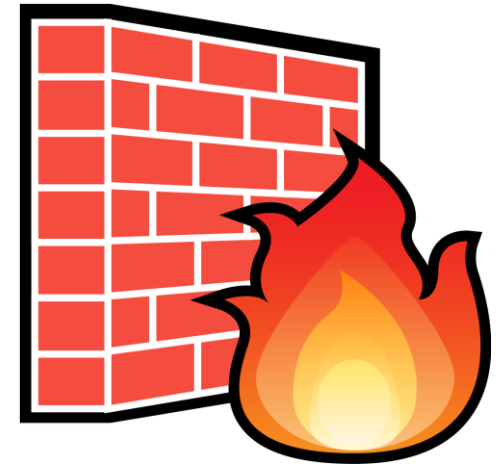
- **What?**
  - eHealth Exchange Hub firewall migration
- **When?**
  - Saturday, May 27th, 10:00am to 2:00pm ET
  - eHealth Exchange will send an “all clear” email to Participant’s Operations contact and a Dashboard alert once the migration is complete
- **Why?**
  - Migration to new firewalls that will be dedicated to eHealth Exchange connections
- **Who?**
  - eHealth Exchange technology vendor
  - eHealth Exchange staff (post-migration validation & monitoring)



Migration has already been completed successfully in lower environments (e.g., Validation)

# Announcement: Hub Service Outage – LIVE Environment

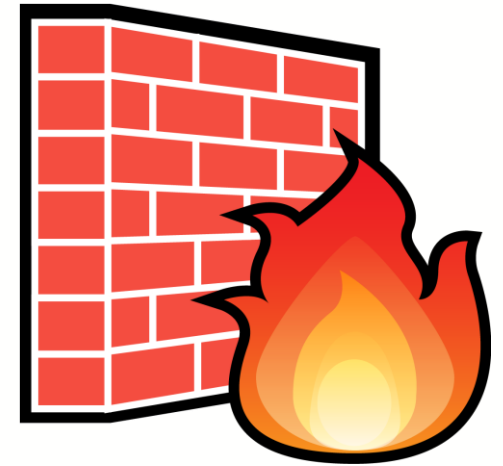
- **Any Participant Changes Required?**
  - There should be NO changes required of Participants
    - Hub public IP addresses are not changing
    - Hub endpoints are not changing
    - Certificates are not changing
    - Allow lists are not changing



Migration has already been completed successfully in lower environments (e.g., Validation)

# Announcement: Hub Service Outage – LIVE Environment

- **Any Participant Remediation Required?**
  - Messages sent to the Hub during the outage will NOT be processed by the Hub
  - Possible actions that may be taken to remediate the transaction loss during the downtime include:
    - Participants may queue requests during the outage window, and when the migration is complete and the “all clear” is communicated, proceed to release the queued messages
    - Participants may retry messages sent and failed during the outage window (after the “all clear” is communicated)



Migration has already been completed successfully in lower environments (e.g., Validation)





# Trust Bundle Update

VALIDATION Intermediate Trust Chain

eHealth Exchange<sup>TM</sup>

# Change to VALIDATION Intermediate Certificate Bundle

- An intermediate certificate has been added to the VALIDATION Environment Trust Bundle
- **Who is impacted?**
  - This update affects all members of the eHealth Exchange and those that will be testing with the eHealth Exchange candidate QHIN under TECA. This impacts VALIDATION (non-production) environment certificates.
- **What is the change?**
  - End-entity VALIDATION certificates for the EMR Direct certificate authority (CA) will be issued using a new intermediate CA certificate beginning 5/18/23. Your exchange solution will need to trust the new VALIDATION intermediate EMR Direct CA certificate and continue to trust the legacy VALIDATION intermediate EMR Direct CA certificate. Updating your VALIDATION trust stores with the new trust bundle is essential to maintaining seamless operations and avoiding potential disruptions.
- **Actions to take:**
  - Update your VALIDATION trust stores and/or inform your network and/or application administrators so they may do so ASAP.
  - The updated trust bundle is available from the DirectTrust website:  
<https://bundles.directtrust.org/bundles/sequoiaProjectValTrustBundle.p7b>
  - Alternatively, you can install the new intermediate certificate individually from DirectTrust:  
[https://directtrust.zohodesk.com/portal/en/kb/articles/individual-root-and-intermediate-pem-files#EMR\\_Direct\\_Validation\\_Intermediate\\_Certificate\\_NEW\\_in\\_Quarter\\_2\\_of\\_2023](https://directtrust.zohodesk.com/portal/en/kb/articles/individual-root-and-intermediate-pem-files#EMR_Direct_Validation_Intermediate_Certificate_NEW_in_Quarter_2_of_2023) **(note: you should not replace or remove any existing intermediates from your trust stores)**

## Hub Considerations for the Validation Certificate Changes

After the Hub's validation EMR Direct certificate is renewed on or before September 13, 2023, the validation Hub will connect to participant gateways using the new EMR Direct validation intermediate CA certificate.

For now, participants should retain the legacy EMR Direct intermediate validation certificate in their trust store because the Hub will continue to connect to your technology solution using the legacy EMR Direct validation intermediate CA.





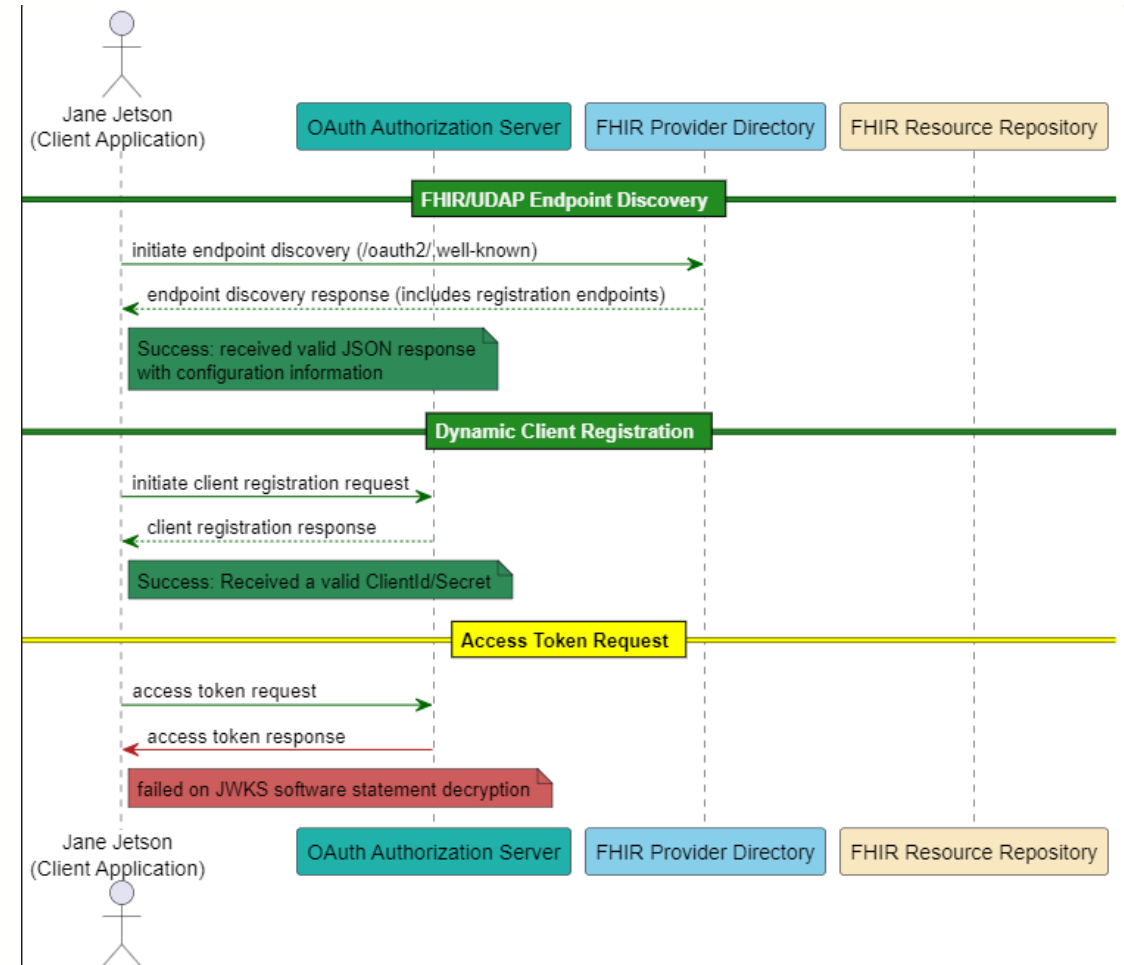
# FHIR Connectathon

eHealth Exchange<sup>TM</sup>



## TEFCA Facilitated FHIR Track

- Active participation in TEFCA Facilitated FHIR Track
- Performed role of UDAP FHIR Server (Responder)
- Successfully demonstrated
  - /.well-known/udap endpoint discovery
  - Dynamic client registration
- Still working on generation of access token when CAT ended
- Note that there is no actor role for an intermediary in the Facilitated FHIR workflow
- eHealth Exchange will be more active with the TEFCA Brokered FHIR exchange (which includes an intermediary in the workflow)





# QHIN Update

eHealth Exchange<sup>TM</sup>

# TEFCA Policy and Technical Obligations Now Available

TEFCA Policy Review	TEFCA Technical Review
June 20, 2023 3:00 – 4:00 p.m. ET	June 12, 2023 2:30 – 4:00 p.m. ET
July 10, 2023 11:00 a.m. – 12:00 p.m. ET	July 14, 2023 1:00 – 2:30 p.m. ET
July 24, 2023 12:00 – 1:00 p.m. ET	July 31, 2023 12:00 – 1:30 p.m. ET
<a href="#">Register Now</a>	<a href="#">Register Now</a>

[ehealthexchange.org/what-we-do/tefca-and-ehealth-exchange/#tefca-resources](https://ehealthexchange.org/what-we-do/tefca-and-ehealth-exchange/#tefca-resources)



## TEFCA Resources for eHealth Exchange Participants

### TEFCA Obligations

- [eHealth Exchange TEFCA Terms and Conditions](#)
- [Change Management Protocol](#)
- [Common Agreement for Nationwide Health Information Interoperability V1 \(Only eHealth Exchange signs\)](#)
- [Dispute Resolution Protocol](#)
- [Enforcement Protocol](#)
- [Governance Protocol](#)
- [Operations and Reporting Protocol](#)
- [Security Incident Protocol](#)
- [Validation Plan](#)

### TEFCA Checklist (Includes Technical Obligations)

- [TEFCA Requirements Checklist](#)

### Recordings and Slides

May 2023 Monthly TEFCA Technical Call

[View Slides](#) | [View Recording](#)

Understanding eHealth Exchange TEFCA Flowdowns and Protocols

[View Slides](#)

Understanding Project US@

[View Slides](#) | [View Recording](#)

Understanding TEFCA – Annual Meeting 2022

[View Slides](#) | [View Recording](#)

Why TEFCA? by CRISP

[View Slides](#) | [View Recording](#)

<https://ehealthexchange.org/what-we-do/tefca-and-ehealth-exchange/#tefca-resources>



## Intent to Participate from 8 HIEs Operating in 12 States & DC



AK, AL, AZ, CA, CO, CT, DC, IA, IN, MD, WV, VA





# Events - 2023

eHealth Exchange<sup>TM</sup>

## DHITS & CIVITAS – Annual Meetings



August 8-10, 2023

Hyatt Regency - New Orleans, LA

Booth #623

[Link for registration](#)



August 20-23, 2023

Gaylord - National Harbor, MD

[Link for registration](#)

We hope to see you there!

## Annual Meeting – Mark Your Calendar!



**Tuesday,  
November 14, 2023**  
eHealth Exchange  
Annual Meeting

**Town & Country Resort**  
500 Hotel Circle North  
San Diego, CA 92108

<https://ehealthexchange.org/2023-annual-meeting/>





# Contacts

Changing and New Contacts

eHealth Exchange<sup>TM</sup>

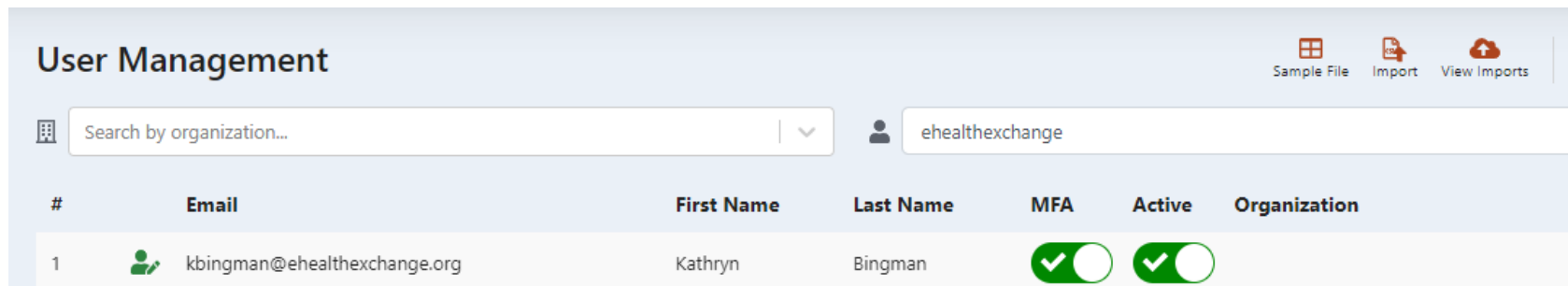


# Contacts for Your Organization




We want to ensure that we are reaching the right people at your organization with our communications.

- If you have had recent or past changes and are unsure if we have an updated list: email [administrator@ehealthexchange.org](mailto:administrator@ehealthexchange.org) requesting the Contact List Template to complete and return.
- The template asks name, title, phone number, email address, and what type of emails the resource should receive.
- This will assist eHealth Exchange and each Participant in knowing that the communication we send is received appropriately.

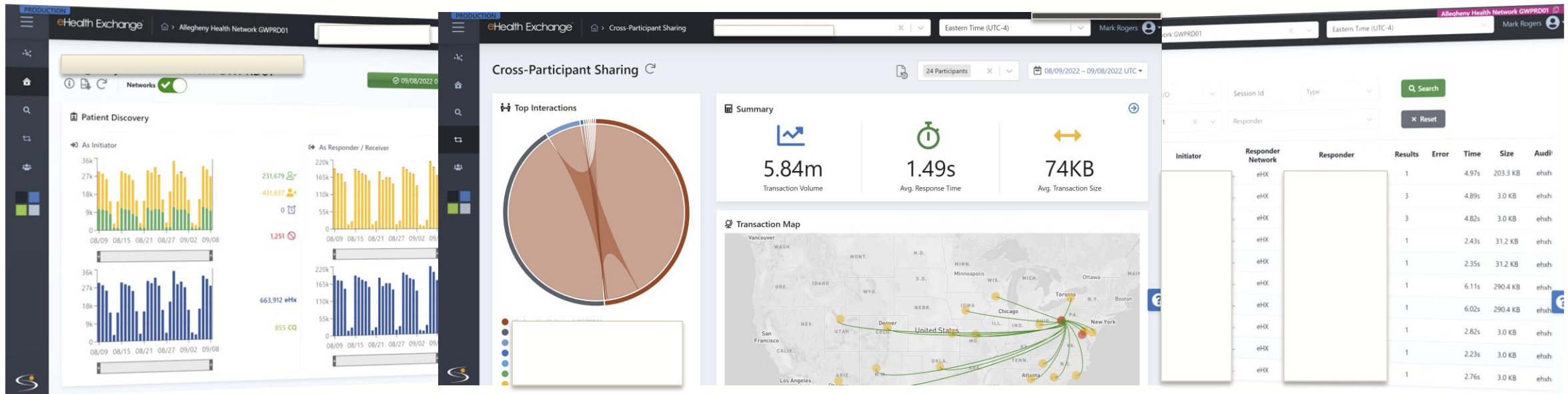
Don't forget to maintain your Hub Dashboard accounts! If nobody at your organization currently has the rights to add/remove Dashboard accounts, please reach out to us at [administrator@ehealthexchange.org](mailto:administrator@ehealthexchange.org).



The screenshot shows the 'User Management' interface. At the top right, there are links for 'Sample File', 'Import', and 'View Imports'. Below these is a search bar labeled 'Search by organization...' and a dropdown menu showing 'ehealthexchange'. The main part of the interface is a table with the following columns: '#', 'Email', 'First Name', 'Last Name', 'MFA', 'Active', and 'Organization'. There is one user listed: Kathryn Bingman, with email kbingman@ehealthexchange.org. Both the MFA and Active status columns for this user show a green checkmark in a circle.

#	Email	First Name	Last Name	MFA	Active	Organization
1	 kbingman@ehealthexchange.org	Kathryn	Bingman			

## Your Hub Dashboard – Your web portal providing interoperability insights.



- Identify transaction volume, response times, drill-down, & download.
- Who is querying your organization?
- Where are your clinicians searching?
- How much care occurs outside your organization?



# Please Engage!

We'd love to hear from you.

eHealth Exchange<sup>TM</sup>



# Technical Work Group

**Thursdays 4-5pm Eastern:** email [administrator@ehealthexchange.org](mailto:administrator@ehealthexchange.org) for an invite

## Typical Topics:

1. Technical Specification Creation
  - a) Push notifications
  - b) Populating directory with hospital locations
  - c) Broadcast query
  - d) FHIR Directory
  - e) Consumer access
  - f) Carequality harmonization
  - g) Controlled Unclassified Information (CUI) Marking
2. Testing
3. Hub Updates
4. Capacity planning [[Final Thursday each month](#)]



## How might I obtain additional information?

How	When	Where
Visit eHealth Exchange Website	Any time	<a href="https://ehealthexchange.org">https://ehealthexchange.org</a>
Monthly Participant Web Meetings	3rd Thursday of Each Month at 1 pm ET	<a href="https://ehealthexchange.org/events">https://ehealthexchange.org/events</a>
Weekly Technical Workgroup	Thursdays 4-5 ET	<a href="https://ehealthexchange.org/events">https://ehealthexchange.org/events</a>
Email	Any time if you have a specific question	<a href="mailto:administrator@ehealthexchange.org">administrator@ehealthexchange.org</a>

## How might I obtain assistance?

How	Who	Where
Certificates	Direct Trust Support	<a href="mailto:support@directtrust.zohodesk.com">support@directtrust.zohodesk.com</a>
Hub and Hub Dashboard Assistance	Hub Service Desk	<a href="mailto:servicedesk@hub.ehealthexchange.org">servicedesk@hub.ehealthexchange.org</a>
Directory Assistance, setup, changes	Tech Support	<a href="mailto:techsupport@ehealthexchange.org">techsupport@ehealthexchange.org</a>
Testing Questions	Testing Team	<a href="mailto:testing@ehealthexchange.org">testing@ehealthexchange.org</a>
Questions about DURSA/OPP's	Administrator	<a href="mailto:administrator@ehealthexchange.org">administrator@ehealthexchange.org</a>

Follow **@eHealthExchange**

