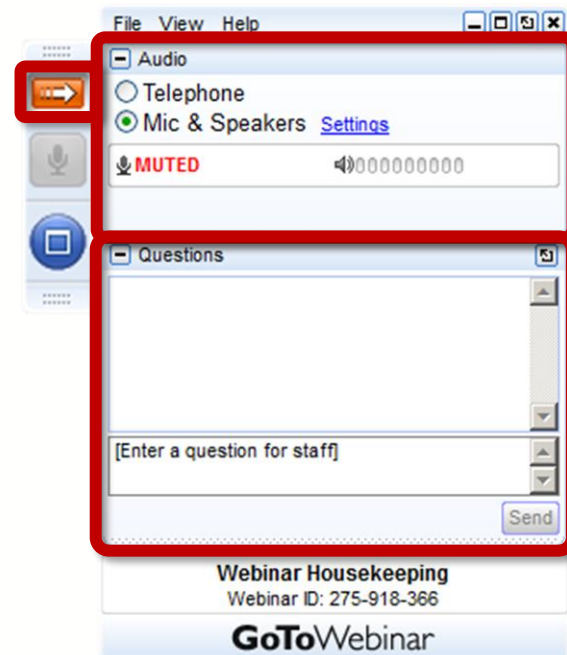


June 15th, 2023

eHealth ExchangeTM

All Participant Call

How Do I Participate?



Your Participation

Open and close your control panel

Join audio:

- Choose "Mic & Speakers" to use VoIP
- Choose "Telephone" and dial using the information provided

Submit questions and comments via the Questions panel

Note: Today's presentation is being recorded and will be provided within 48 hrs

Problems or Questions? Contact Dawn Van Dyke
dvandyke@ehealthexchange.org or 703.864.4062

Today's Topics

1. New Participants	Mark Rogers
2. CC Elections	Pat Russell
3. FDA Pilot – Data Quality Review	Matt Deady & Michael McCune
4. Directory Update	Michael McCune
6. QHIN Update	Pat Russell
7. Events	Mark Rogers
8. Contacts & Operational Notices	Mark Rogers
9. Q&A	Everyone



New Participants

eHealth ExchangeTM

Congratulations to our newest Participants!

- Catholic Health
- HI-BRIDGE Health Information Exchange



Committed to Improving Patient Care via Data Exchange



2023 Election

Coordinating Committee Seats

eHealth ExchangeTM

2023 Coordinating Committee (CC) Seats

	Representative	Term Date
HIO	Jaime Bland, RN	9/30/2025
	John Kansky	9/30/2023
	Pam Matthews	9/30/2024
Health Systems/IDN	Patti Cuartas, PA	9/30/2023
	Matt Eisenberg, MD	9/30/2025
	Open (formerly Ryan Stewart)	9/30/2023
	Paul Matthews	9/30/2025
Other	Eric Liederman	9/30/2024
	Derek Plansky	9/30/2024

2023 Coordinating Committee (CC) Election Timeline

- Nominating Committee – Pam Matthews, Paul Matthews, Matt Eisenberg and Derek Plansky
 - Completed review and edits of application
- Announce elections during monthly All Participant Call – May, June and July
- July 14 - Email Participant notice for elections
- **July 17 – July 28 - Open for applications**
- July 31- August 4 - Nominating Committee Review Applications
- August 8 - Nominating Committee finalizes slate of nominees
- August 15 - Coordinating Committee approves slate of nominees
- **August 21-September 1 - Participants Vote**
- September 5-11 - Time for a runoff if needed
- Sept 19 - New Coordinating Committee Members shadow CC Call
- Sept 21 - Notice to Participants on monthly All Participant Call
- Sept 25 – October 13, Orientation
- **October 17- First New CC Member meeting**



FDA Pilot

Data Quality Review

eHealth ExchangeTM

Exchange Pilot Data Quality Assessment Presentation

Questions and Answers



Directory Update

Legacy Directory Retirement and
Transition to FHIR R4 Directory

eHealth ExchangeTM

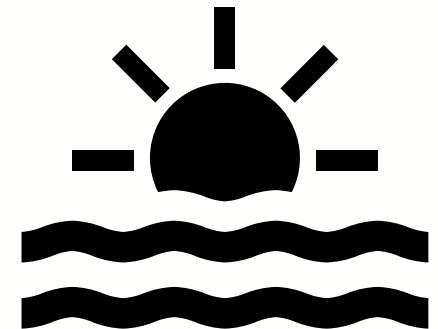
Rollout of New HAPI Directories and Retirement of Legacy Directories

Rollout of the new HAPI directories to all participants:

- The HAPI directories have been available to all participants since 4/12/2023
- Legacy directories will be the data source for HAPI directories until the legacy directories are retired. Updates/additions will be made to the legacy directories and the legacy directories will be used to refresh the data in the HAPI directories

Legacy directory retirement

- The legacy directories will be retired on July 27th and will no longer be accessible by participants after July 27th.
- The eHealth Exchange is aware of several participants which need to migrate to the HAPI directories, but please inform administrator@ehealthexchange.org that you need to migrate if not sure.



Planned transition to the new HAPI Directories

Transition Plan - on July 6th, the eHealth Exchange will migrate access to the new HAPI directories as follows:

- FHIR API access:
 - Participants with FHIR API keys for the legacy directories will be migrated to access the new HAPI directories. After July 6th, the FHIR API keys will not be able to access the legacy directories.
 - During the week of June 19th, the eHealth Exchange will be informing participants that their FHIR API keys are ready to use with the new HAPI directories. If your organization has specific technical contacts that need to be alerted, send an email to administrator@ehealthexchange.org
- UDDI API access:
 - On July 6th, participants accessing the legacy directories with the UDDI API will have their requests forwarded to the UDDI API under the new HAPI directories. Forwarding will be setup as follows:
 - Legacy VAL with path /uddi/inquiry → Forward requests to HAPI VAL directory with path /uddi
 - Legacy VAL HubAware with path /uddi/inquiry → Forward requests to HAPI VAL directory with path /uddi-hubaware
 - Legacy PROD with path /uddi/inquiry → Forward requests to HAPI PROD directory with path /uddi
 - Legacy PROD HubAware with path /uddi/inquiry → Forward requests to HAPI PROD directory with path /uddi-hubaware

HAPI directory updates after legacy directory retirement

- **After retirement of the legacy directories on July 27th:**
 - Requests for new directory entries or updates to existing directory entries should be submitted to techsupport@ehealthexchange.org
 - The eHealth Exchange will stop using “INI files” as a template to provide information for directory changes. When you submit a ticket to techsupport@ehealthexchange.org, please ask for a new template before submitting changes. Stay tuned for further updates.
- **Future state:**
 - A new **self-service directory portal** will be rolled out for participant access so that your organization may make changes to directory entries, although the portal will not be immediately available after July 27th. More updates about the self-service directory portal will be coming later this year.

New FHIR R4 directories have been available since Wednesday 4/12/2023!

- Email techsupport@sequoiaproject.org to get access to the new FHIR R4 directories based on HAPI:
- For existing FHIR API users, ask to have your API key migrated to the HAPI directories. For organizations that have not accessed the directory FHIR API in the past, ask for a new FHIR API key to access the HAPI directories.
- Provide feedback on the new HAPI directories:
- Email techsupport@ehealthexchange.org for technical issues or concerns
- For urgent attention, copy administrator@ehealthexchange.org

New HAPI Directory APIs – 3 API Choices

FHIR Client API

- Access the directory with a FHIR client using a FHIR API key provided by Sequoia technical support – email techsupport@sequoiaproject.org for a FHIR API key
- Provides access to both **Argonaut STU3 FHIR** (same as the current directory offering) and **FHIR R4** APIs
- Typically provides read-only access – no update or create operations

UDDI API (SOAP API) continued support, for now

- The new FHIR HAPI based directory will support a traditional **UDDI/SOAP** interface
- Newer data elements introduced with STU3/R4 will not be available under the UDDI/SOAP interface
- **No access** to sub-participant entries
- Access will require SSL/TLS certificate-based security only, as in the past
- The UDDI API **will be retired on 12/15/2023** so please make plans to transition to FHIR API access!

New HAPI Directories and Hub endpoints

FHIR Client API and Hub endpoints

- Unlike the current directories, using the FHIR APIs, there are no longer separate directories for direct endpoints and Hub endpoints.
- To obtain Hub endpoints using the FHIR APIs, use the FHIR operation \$hub-aware. For example:
 - For all FHIR R4 entries with Hub endpoints:
 - [https://directory.prn.ehealthexchange.org/fhir/Organization/\\$hub-aware](https://directory.prn.ehealthexchange.org/fhir/Organization/$hub-aware)
 - For a single FHIR R4 entry with Hub endpoints:
 - [https://directory.prn.ehealthexchange.org/fhir/Organization/2.16.840.1.113883/\\$hub-aware](https://directory.prn.ehealthexchange.org/fhir/Organization/2.16.840.1.113883/$hub-aware)

UDDI API (SOAP API) and Hub endpoints

- The base URI remains the same for direct and Hub endpoints but the path changes. For example:
 - Direct endpoints with the UDDI API:
 - <https://directory.prn.ehealthexchange.org/uddi>
 - Hub endpoints with the UDDI API:
 - <https://directory.prn.ehealthexchange.org/uddi-hubaware>

Directory Query Recommendations

- Query with an “active=true” parameter
 - Directory entries with “active=false” are unapproved and not ready to query
 - Unlike the legacy directories, if you don’t specify a value for “active”, then the default is not “active=true”. Entries will be returned with active set to true and false if the active parameter is not specified.
- Query for Participant entries if you don’t want to retrieve Subparticipant entries
 - Query parameter/value for Participant entries:
type=https://sequoiaproject.org/fhir/sphd/CodeSystem/OrganizationType%7CParticipant
 - Note: %7C is an URL encoded pipe character (“|”)
 - In the future, the directory will have SubParticipant entries which represent provider locations such as a hospital or clinic.
- Directory paging
 - HAPI has a paging feature which adheres to the paging behavior specified by FHIR R4 – see <http://hl7.org/fhir/R4/search.html#count>
 - The directory is currently set to a default page size of 500, so by default, 500 records will be returned for a single response. You can return less records in a response by setting the _count parameter to a value lower than 500.
 - The maximum page size is 1000, so you cannot increase the page size beyond 1000 using the _count parameter.

FHIR R4 Directory Transition Questions & Answers



QHIN Update

eHealth ExchangeTM

Have You Made A Decision?

It's Time To Choose TEFCA

- The 60-day opt-out period for eHealth Exchange network participants started June 1, 2023
- **An organization may only participate in TEFCA exchange via a single QHIN.**
 - If your organization is active today with multiple candidate QHIN networks, you must select only one to use for TEFCA exchange. This does not preclude you from continuing to participate in multiple networks for non-TEFCA exchange.
- Review all policies, checklists, webinars, and FAQs now available to make an informed decision:

<https://ehealthexchange.org/what-we-do/tefca-and-ehealth-exchange/#tefca-resources>

Action Required:

If your organization does not wish to exchange with TEFCA-enabled networks via the eHealth Exchange, you must notify administrator@ehealthexchange.org by 7/31/2023.

Your organization can change its decision to connect with TEFCA at any time.

If your organization would like to engage in TEFCA exchange via eHealth Exchange but will not be ready to fulfil the QHIN participation obligations by the end of 2023, we suggest you opt-out for now.

TEFCA Policy and Technical Obligations Now Available

TEFCA Policy Review	TEFCA Technical Review
June 20, 2023 3:00 – 4:00 p.m. ET	June 12, 2023 - <i>past</i> 2:30 – 4:00 p.m. ET
July 10, 2023 11:00 a.m. – 12:00 p.m. ET	July 14, 2023 1:00 – 2:30 p.m. ET
July 24, 2023 12:00 – 1:00 p.m. ET	July 31, 2023 12:00 – 1:30 p.m. ET
Register Now	Register Now

TEFCA Resources for eHealth Exchange Participants



TEFCA Obligations



TEFCA Checklist
(Includes Technical Obligations)



Webinars

View Resources



View Resources



Register Now or View Past Events



TEFCA QHIN Frequently Asked Questions

– **Why should my organization join TEFCA?**

Like Carequality, we expect that TEFCA will open access to additional exchange partners and eventually, will support additional use cases beyond query for treatment and individual access.

<https://ehealthexchange.org/what-we-do/tefca-and-ehealth-exchange/#tefca-resources>

Intent to Participate from 8 HIEs Operating in 12 States & DC



AK, AL, AZ, CA, CO, CT, DC, IA, IN, MD, WV, VA



Events - 2023

eHealth ExchangeTM

DHITS & CIVITAS – Annual Meetings



August 8-10, 2023

Hyatt Regency - New Orleans, LA

Booth #623

[Link for registration](#)



August 20-23, 2023

Gaylord - National Harbor, MD

[Link for registration](#)

We hope to see you there!

Annual Meeting – Mark Your Calendar!

REGISTRATION OPEN

FREE FOR NETWORK PARTICIPANTS

eHealth Exchange

Annual Meeting

NOV 14 2023

SAN DIEGO | CALIFORNIA



**Tuesday,
November 14, 2023**
eHealth Exchange
Annual Meeting

Town & Country Resort
500 Hotel Circle North
San Diego, CA 92108

<https://ehealthexchange.org/2023-annual-meeting/>



Contacts

Changing and New Contacts

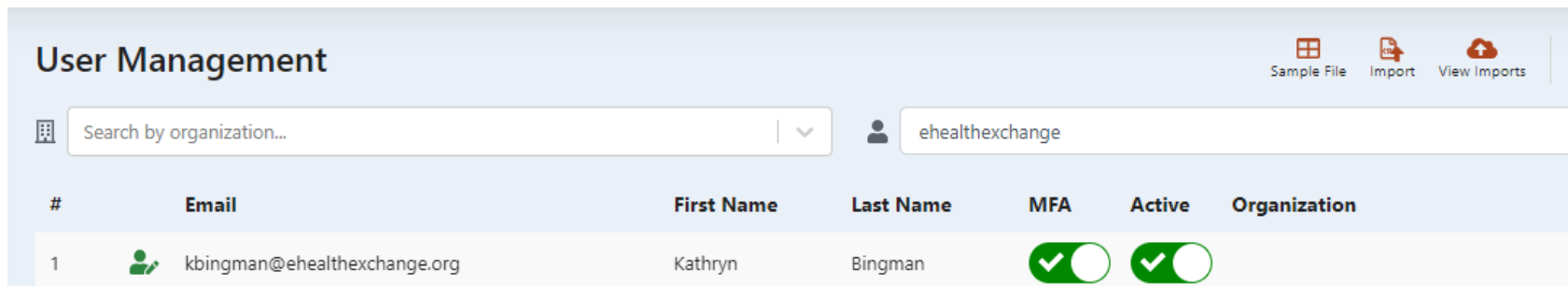
eHealth ExchangeTM

Contacts for Your Organization




We want to ensure that we are reaching the right people at your organization with our communications.

- If you have had recent or past changes and are unsure if we have an updated list: email administrator@ehealthexchange.org requesting the Contact List Template to complete and return.
- The template asks name, title, phone number, email address, and what type of emails the resource should receive.
- This will assist eHealth Exchange and each Participant in knowing that the communication we send is received appropriately.

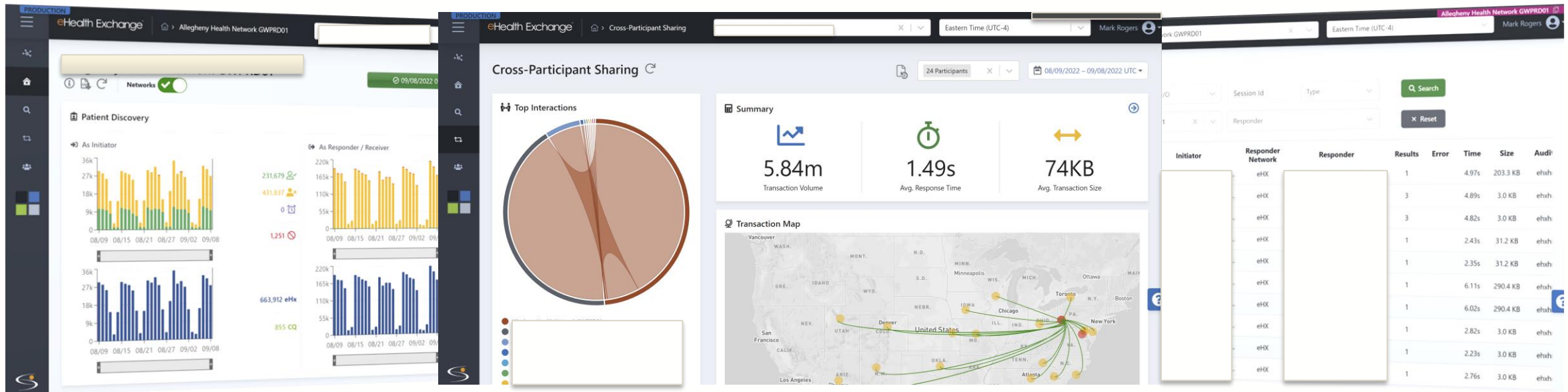
Don't forget to maintain your Hub Dashboard accounts! If nobody at your organization currently has the rights to add/remove Dashboard accounts, please reach out to us at administrator@ehealthexchange.org.



The screenshot shows the 'User Management' interface. At the top, there are buttons for 'Sample File', 'Import', and 'View Imports'. Below these is a search bar labeled 'Search by organization...' and a dropdown menu showing 'ehealthexchange'. The main part of the interface is a table with the following columns: '#', 'Email', 'First Name', 'Last Name', 'MFA', 'Active', and 'Organization'. There is one user listed: Kathryn Bingman, with email kbingman@ehealthexchange.org. Both the MFA and Active status columns for this user show green checkmarks in circles.

#	Email	First Name	Last Name	MFA	Active	Organization
1	 kbingman@ehealthexchange.org	Kathryn	Bingman			

Your Hub Dashboard – Your web portal providing interoperability insights.



- Identify transaction volume, response times, drill-down, & download.
- Who is querying your organization?
- Where are your clinicians searching?
- How much care occurs outside your organization?



Please Engage!

We'd love to hear from you.

eHealth ExchangeTM

Technical Work Group

Thursdays 4-5pm Eastern: email administrator@ehealthexchange.org for an invite

Typical Topics:

1. Technical Specification Creation
 - a) Push notifications
 - b) Populating directory with hospital locations
 - c) Broadcast query
 - d) FHIR Directory
 - e) Consumer access
 - f) Carequality harmonization
 - g) Controlled Unclassified Information (CUI) Marking
2. Testing
3. Hub Updates
4. Capacity planning [Final Thursday each month]

How might I obtain additional information?

How	When	Where
Visit eHealth Exchange Website	Any time	https://ehealthexchange.org
Monthly Participant Web Meetings	3rd Thursday of Each Month at 1 pm ET	https://ehealthexchange.org/events
Weekly Technical Workgroup	Thursdays 4-5 ET	https://ehealthexchange.org/events
Email	Any time if you have a specific question	administrator@ehealthexchange.org

How might I obtain assistance?

How	Who	Where
Certificates	Direct Trust Support	support@directtrust.zohodesk.com
Hub and Hub Dashboard Assistance	Hub Service Desk	servicedesk@hub.ehealthexchange.org
Directory Assistance, setup, changes	Tech Support	techsupport@ehealthexchange.org
Testing Questions	Testing Team	testing@ehealthexchange.org
Questions about DURSA/OPP's	Administrator	administrator@ehealthexchange.org

Follow **@eHealthExchange**

