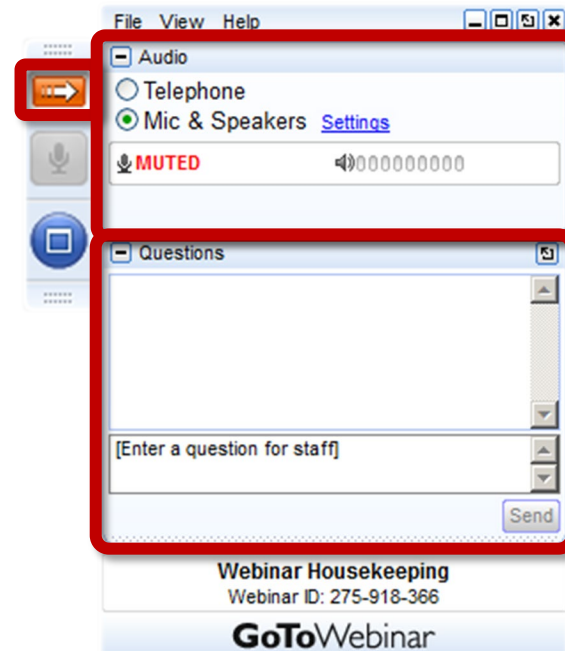




# All Participant Call

January 18, 2024

# How Do I Participate?



## Your Participation

Open and close your control panel

Join audio:

- Choose "Mic & Speakers" to use VoIP
- Choose "Telephone" and dial using the information provided

Submit questions and comments via the Questions panel

**Note:** Today's presentation is being recorded and will be provided within 48 hrs

Problems or Questions? Contact Dawn Van Dyke  
[dvandyke@ehealthexchange.org](mailto:dvandyke@ehealthexchange.org) or 703.864.4062

# Today's Topics

1. New Participants	Kathryn Bingman
2. eHealth Exchange Team Member Spotlight	Ashley Green
3. Coordinating Committee Update	Pat Russell
4. HL7 FHIR Connectathon 35	Mike Yackanich
5. QHIN Update	Pat Russell & Mike Yackanich
6. Events & Other Exciting News	Tina Feldmann
7. Information & Resources	Kathryn Bingman
8. Q&A	Everyone

# New Participants

# Congratulations to our newest Participants!



Hamilton Health Care System is a not-for-profit, fully integrated system of care serving the northwest Georgia region. The Dalton-based flagship of the system, Hamilton Medical Center, is a 255-bed regional acute-care hospital that offers major medical, surgical and diagnostic services, including award-winning, accredited stroke and chest pain centers. Known for its advanced care and personalized service, Hamilton Health Care System offers innovative treatment options in state-of-the-art facilities while maintaining a compassionate, friendly, and tranquil healing environment. <https://www.hamiltonhealth.com/>



The mission of WYFI is to promote a healthier Wyoming by developing a secure, connected, and coordinated statewide health IT system that supports effective and efficient healthcare. Our primary goal is to share patient healthcare information in a secure environment to improve patient care and to reduce system inefficiencies.

<https://wyfi.solutions/>

Committed to Improving Patient Care via Data Exchange

# Congratulations to our newest Participants!



Valley Health, a progressive leader in quality healthcare since 1975. They provide primary and preventative care to more than 100,000 patients annually in southern West Virginia, southeastern Ohio, and eastern Kentucky. Valley Health operates over 40 healthcare facilities and is home to medical experts who provide care in family medicine, women's health, dentistry, internal medicine, ear, nose and throat, optometry, pediatrics, and behavioral health. They also administer pharmacies and specialized programs, including Women, Infants and Children (WIC) nutrition services, school-based health centers, black lung treatment, and programs for people experiencing homelessness.

<https://valleyhealth.org/>



## Precision Data Capture

Precision Data Capture does the heavy lifting to connect to the large networks for requesting the medical records you need to deliver better patient care. Our platform, people, and processes address the needs of providers to get timely and comprehensive medical records. When using our services, you can now easily request records across more than 600K Providers, 50K Clinics and 4.2K Hospitals across the nation.

<https://www.pdcapture.com/>

Committed to Improving Patient Care via Data Exchange

# Congratulations to our newest Participants!



Vivlio Health is a cloud-based platform that provides tools for clinical staff to access medical records electronically or via fax; manage and search through all records electronically regardless of file type; and do chart prep in a seamless way. Vivlio's innovative platform is designed to remove the inefficiencies of the medical record management processes for doctors and their staff. Medical records shouldn't be the reason why appointments are delayed or cancelled; or that tests are rerun for a patient.

[Homepage - Vivlio Health](#)

Committed to Improving Patient Care via Data Exchange

# Employee Spotlight



# Ashley Green

Program Manager

[Ashley Green | LinkedIn](#)





# Coordinating Committee 2024 Upcoming Open Seats

# Coordinating Committee/Federal



**Cindy Pan**

Organization

Veteran's Health  
Administration

Representing

Federal Agencies



**Lance Scott**

Organization

Defense Health Agency

Representing

Federal Agencies



**Mitch Thornbrugh**

Organization

Indian Health Service

Representing

Federal Agencies



**Ben Gurga**

Organization

Social Security Agency

Representing

Federal Agencies



**Dr. Hussein Ezzeldin**

Organization

Food & Drug Administration

Representing

Federal Agencies

# Coordinating Committee/Non-Federal



**Matt Eisenberg, MD**

Organization

Stanford Health Care

Representing

Health Systems



**Eric Liederman, MD**

Organization

Kaiser Permanente

Representing

"Other" (e.g.  
ambulatory, pediatric,  
dialysis, intermediaries,  
vendors, payers)



**Pam Matthews, RN**

Organization

East Tennessee  
Health Information  
Network

Representing

Health Information  
Organizations



**Dan Paoletti**

Organization

Ohio Health  
Information  
Partnership

Representing

Health Information  
Organizations



**John Kansky**

Organization

Indiana Health  
Information Network

Representing

Health Information  
Organizations



**Patti Cuartas, PA**

Organization

Mount Sinai Health  
System

Representing

Health Systems



**Paul Matthews**

Organization

OCHIN

Representing

"Other" (e.g.  
ambulatory, pediatric,  
dialysis, intermediaries,  
vendors, payers)



**Arun Gopalan**

Organization

DaVita

Representing

"Other" (e.g.  
ambulatory, pediatric,  
dialysis, intermediaries,  
vendors, payers)



**Derek Plansky**

Organization

Health Gorilla

Representing

"Other" (e.g.  
ambulatory, pediatric,  
dialysis, intermediaries,  
vendors, payers)



**Pat Russell, RN**

(non-voting)

Organization

eHealth Exchange

Representing

eHealth Exchange

# Coordinating Committee

## What They Do

The Coordinating Committee provides the needed governance, oversight, management and support of the trust fabric for eHealth Exchange participants.

For a full list of roles and responsibilities, visit <https://ehealthexchange.org/what-we-do/governance/network/>

## 2024 Open Seats

- One for HIO
- Two for vendors, service providers or payers



# HL7 FHIR Connectathon 35

## eHealth Exchange Participation Update

## HL7 FHIR Connectathon 35

### A Virtual Event

January 16-18, 2024

9:00 AM - 5:00 PM ET

## Overarching eHealth Exchange Focus

Use of a Trusted Third Party Intermediary  
within FHIR use cases and workflows  
in an effort to facilitate ease of adoption and scalability

## eHx Track Participation

- Helios FHIR Public Health Reporting (active testing)
- Helios Query and Response (active testing)
- Member Attribution – Education Session (presenter)
- Da Vinci Burden Reduction (BR) (observer)
- Da Vinci Clinical Data Exchange (CDex) (observer)
- FAST Infrastructure (Security & Identity) (observer)



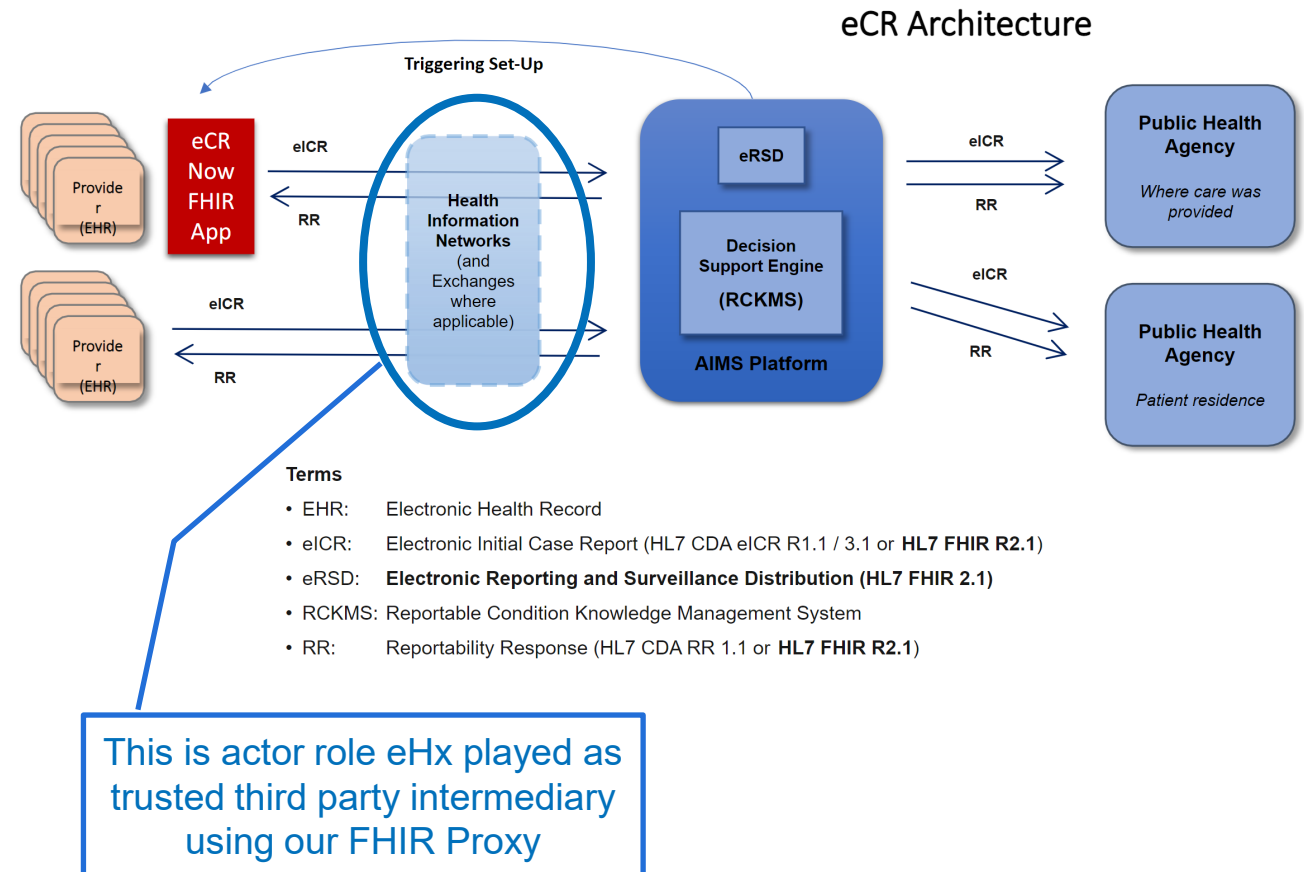
# Helios FHIR Public Health Reporting

## eHealth Exchange Testing Results

- Testing goal was to demonstrate the use of a trusted third party intermediary in the eICR FHIR Post workflow.
- Leveraged the eHealth Exchange (eHx) FHIRProxy service on eHx Proof of Concept (POC) environment to play the actor role of a trusted third party intermediary.
- Configured eHealth Exchange FHIRProxy service to add University of Washington (UW) FHIR server as a Public Health Agency (PHA).
- Created Postman collection and requests to POST sample bundles provided by track leads using FHIR Messaging and FHIR Compositions through the eHx FHIRProxy.

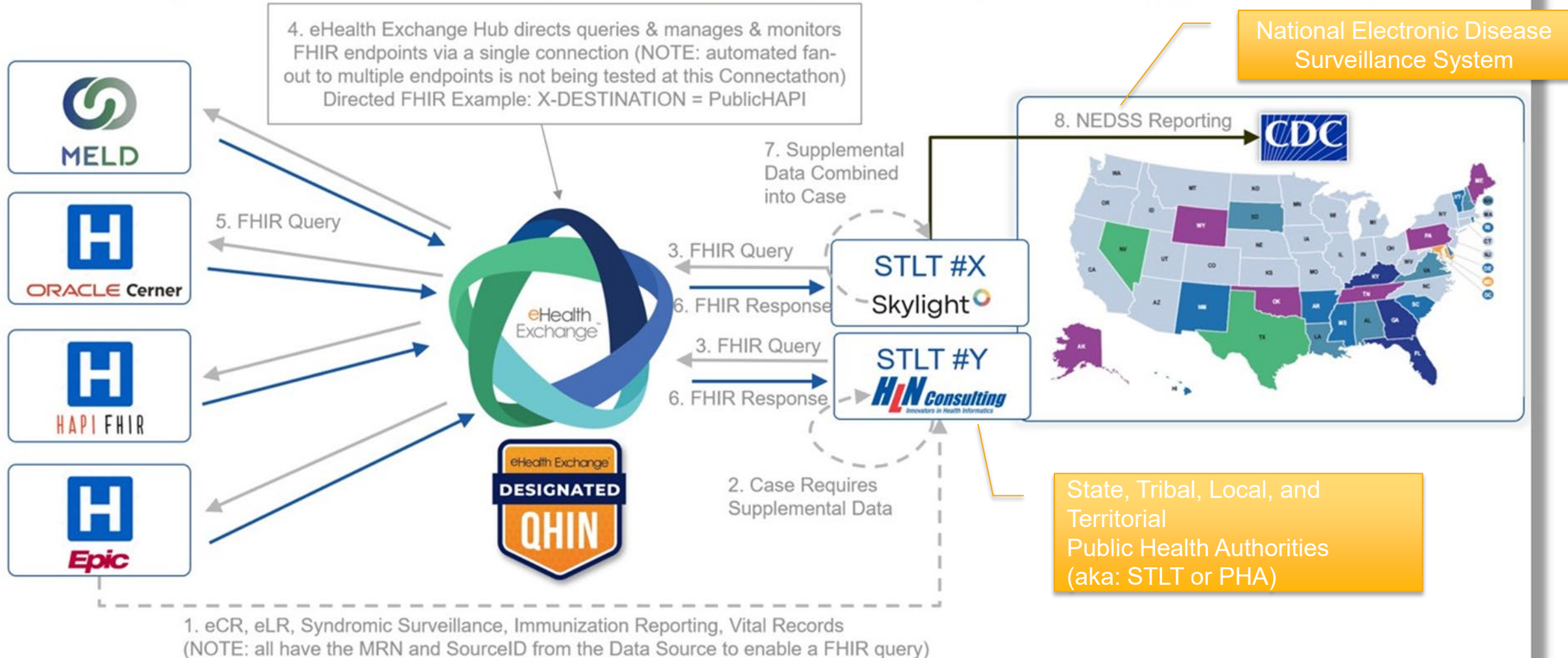
“This track investigated the use of FHIR paradigms as applied to public health (PH).

The electronic Case Reporting (eCR) standards case will be used as the primary standards to test.”





**USE CASE:** given a public health reportable case (#1), query data sources (#3) for supplemental data using FHIR r4 and leveraging a TEFCA QHIN hub (#4)



# FHIR Proxy Use Case



- Hub as Trusted Third Party/Intermediary
- Hub handles backend authorization with target (typically OAuth 2.0)
- Requestor only needs *one* connection to Hub to access *many* target responder FHIR resource repositories
- Routing MUST be provided on request
- Purpose of Use MUST be provided on request
- Initial support includes FHIR search and read only
- Optional URL rewriting is available

# FHIR Proxy – Quick Start Guide

## FHIR Proxy BaseURLs

<https://fhir001val.ehealthexchange.org/ehx/1.0/r4/fhirproxy>  
<https://fhir001prod.ehealthexchange.org/ehx/1.0/r4/fhirproxy>

## Initiator Checklist

1. Email [techsupport@ehealthexchange.org](mailto:techsupport@ehealthexchange.org) to notify of interest in engaging for FHIR Proxy testing in the role of a FHIR initiator
  - a) eHx will then contact you and provide list of existing eHx Participants who have engaged with us as a FHIR responder
2. Prepare your FHIR client to initiate requests as follows:
  - a) send to the FHIR Proxy BaseURL
  - b) include your eHx client certificate to establish mutual TLS connection to the FHIR Proxy
  - c) set X-DESTINATION HTTP Header value to one of the current FHIR responders (provided in Step 1a above)
  - d) set X-POU HTTP Header value to a valid purpose of use (<https://terminology.hl7.org/3.1.0/ValueSet-v3-PurposeOfUse.html>)

# FHIR Proxy – *Quick Start* Guide

## Responder Checklist

1. Email [techsupport@ehealthexchange.org](mailto:techsupport@ehealthexchange.org) to notify of interest in engaging for FHIR Proxy testing in the role of a FHIR responder
  - a) if possible, include public ip address(es) of your FHIR Server(s)
  - b) eHx will then
    - i. add your public ip addresses to the FHIR Proxy outbound allow list (if provided)
    - ii. contact you to review the implementer-specific onboarding process and eHx FHIR application deployment steps
2. Deploy the eHealth Exchange backend FHIR application
  1. eHx can provide detailed procedures for Epic-based targets. Others are TBD
  2. After deployment, eHx will proceed with required security model configuration within the FHIR Proxy that is needed to connect to the Responder OAuth Server and FHIR Resource Repository

# QHIN Update

## Approved QHINs

## Candidate QHINs



## Applicant QHINs



*eClinicalWorks*



# Intent to Participate from 11 HIEs

Intent to Participate from **11 HIEs** Operating in **15 States** Serving up to **126 Million Patients**



AL, AK, AZ, CA, CO, CT, GA, IA, IN, MD, NE, TX, VA, WV, and Washington DC

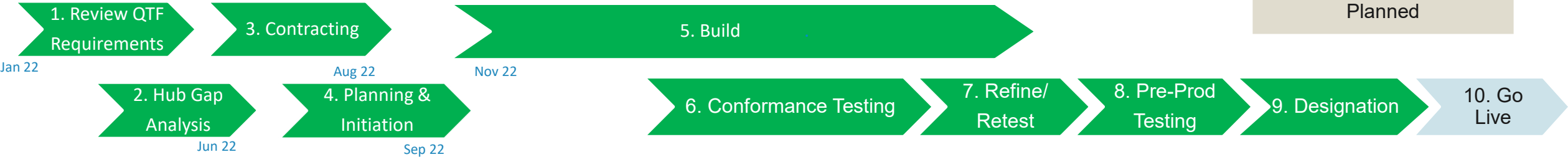


# Technical Readiness for TEFCA

Completed

In Progress

Planned



Phase	Accomplishments
1. Thru 8.	All Phases up to and including non-prod partner testing with other Candidate QHINs completed. Attestation of completion of all requirements for designation submitted to the RCE.
9.	The eHealth Exchange was <b>promoted to Designated QHIN status</b> at the December 12th TEFCA QHIN Designation event !!!
10.	Original target date was Monday 1/8, but <b>our go-live is delayed</b> while we wait for the Live QHINs to migrate from QTF v1.0 to new QTF v1.1 PoU valueset.  The RCE has scheduled a Friday 1/19 “QTF 1.1 Transition to new Purpose of Use Codes” meeting with all Designated and Candidate QHINs. The agenda is simply  “Discuss dates and plan for conversion to the new Purpose of Use codes in alignment with QTF 1.1.”  Since the RCE informed us last week that there will be at least 5 days advance notice before the migration event, that effectively means eHx won’t “go live” until the week of 1/29 at the earliest.



# eHealth Exchange QHIN Governance Committee



**Gary Parker, Chair**

Organization

ALOHR

Representing

QHIN Participant



**Phil Beckett, Vice-Chair**

Organization

C3HIE

Representing

QHIN Participant



**Nichole Sweeney**

Organization

Crisp Shared Services

Representing

QHIN Participant



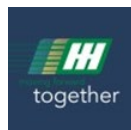
**Sheena Patel, MD**

Organization

CRISP- MD

Representing

QHIN Subparticipant



**Allen Daniels**

Organization

Huntsville Hospital HS

Representing

QHIN Subparticipant



**John Kansky**

Organization

Indiana Health  
Information Network

Representing

Coordinating Committee



**Pam Matthews, RN**

Organization

East Tennessee  
Health Information  
Network

Representing

Healthway Inc., Board



**Pat Russell, RN**  
(non-voting), Secretary

Organization

eHealth Exchange

Representing

eHealth Exchange

## How might I obtain additional information?

How	When	Where
eHealth Exchange Web Site	Any time	<a href="https://ehealthexchange.org/what-we-do/tefca-and-ehealth-exchange">https://ehealthexchange.org/what-we-do/tefca-and-ehealth-exchange</a>
Monthly Participant Webinars	Typically, the 3rd Thursday of Each Month at 1 pm ET	<a href="https://ehealthexchange.org/events">https://ehealthexchange.org/events</a>
Monthly TEFCA Technical Review Meetings	2 <sup>nd</sup> Tuesday of each month, 3:30-4:30 ET	<a href="https://ehealthexchange.org/events">https://ehealthexchange.org/events</a>
Email	Any time	<a href="mailto:administrator@ehealthexchange.org">administrator@ehealthexchange.org</a>
TEFCA Office Hours (Q&A)	10/25, 11/29, 12/11, 1/8, 1/24	Request invite via email from <a href="mailto:administrator@ehealthexchange.org">administrator@ehealthexchange.org</a>

# Events & Other News

## Q1 2024 Events



Los Angeles Convention Center  
Los Angeles, California

February 25-28, 2024



Orange Country Convention Center  
Orlando, Florida

March 11-15, 2024

# We're Hiring!

[Product-Manager-PD-11-6-2023\\_eHealth-Exchange.pdf \(ehealthexchange.org\)](#)

Reports to VP of Interoperability Adoption  
Exempt, Full Time

Email resumes to [hr@ehealthexchange.org](mailto:hr@ehealthexchange.org)



# Information & Resources

# Contacts for Your Organization

We want to ensure that we are reaching the right people at your organization with our communications.

- If you have had recent or past changes and are unsure if we have an updated list: email [administrator@ehealthexchange.org](mailto:administrator@ehealthexchange.org) requesting the Contact List Template to complete and return.
- The template asks name, title, phone number, email address, and what type of emails the resource should receive.
- This will assist eHealth Exchange and each Participant in knowing that the communication we send is received appropriately.

Don't forget to maintain your Hub Dashboard accounts! If nobody at your organization currently has the rights to add/remove Dashboard accounts, please reach out to us at [administrator@ehealthexchange.org](mailto:administrator@ehealthexchange.org).

User Management

Sample File

Import

View Imports

Search by organization...

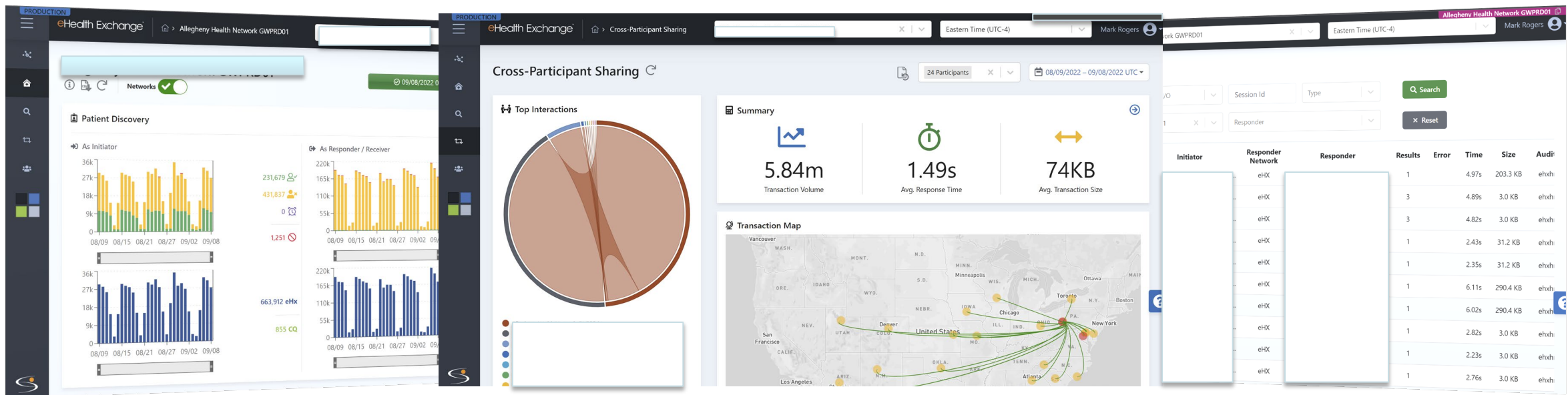
▼

ehealthexchange

#	Email	First Name	Last Name	MFA	Active	Organization
1	<div> <div></div> <div>kbingman@ehealthexchange.org</div> </div>	Kathryn	Bingman	<div> <div></div> <div></div> </div>	<div> <div></div> <div></div> </div>	



# Your Hub Dashboard – Your web portal providing interoperability insights.



- Identify transaction volume, response times, drill-down, & download.
- Who is querying your organization?
- Where are your clinicians searching?
- How much care occurs outside your organization?

# Technical Work Group

**Thursdays 4-5pm Eastern:** email [administrator@ehealthexchange.org](mailto:administrator@ehealthexchange.org) for an invite

## Typical Topics:

1. Technical Specification Creation
  - a) Push notifications
  - b) Populating directory with hospital locations
  - c) Broadcast query
  - d) FHIR Directory
  - e) Consumer access
  - f) Carequality harmonization
  - g) Controlled Unclassified Information (CUI) Marking
2. Testing
3. Hub Updates
4. Capacity planning [\[Final Thursday each month\]](#)

# How might I obtain additional information?

How	When	Where
Visit eHealth Exchange Website	Any time	<a href="https://ehealthexchange.org">https://ehealthexchange.org</a>
Monthly Participant Web Meetings	3rd Thursday of Each Month at 1 pm ET	<a href="https://ehealthexchange.org/events">https://ehealthexchange.org/events</a>
Weekly Technical Workgroup	Thursdays 4-5 ET	<a href="https://ehealthexchange.org/events">https://ehealthexchange.org/events</a>
Email	Any time if you have a specific question	<a href="mailto:administrator@ehealthexchange.org">administrator@ehealthexchange.org</a>

# How might I obtain assistance?

How	Who	Where
Certificates	Direct Trust Support	<a href="mailto:support@directtrust.zohodesk.com">support@directtrust.zohodesk.com</a>
Hub and Hub Dashboard Assistance	Hub Service Desk	<a href="mailto:servicedesk@hub.ehealthexchange.org">servicedesk@hub.ehealthexchange.org</a>
Directory Assistance, setup, changes	Tech Support	<a href="mailto:techsupport@ehealthexchange.org">techsupport@ehealthexchange.org</a>
Testing Questions	Testing Team	<a href="mailto:testing@ehealthexchange.org">testing@ehealthexchange.org</a>
Questions about DURSA/OPP's	Administrator	<a href="mailto:administrator@ehealthexchange.org">administrator@ehealthexchange.org</a>

Follow **@eHealthExchange**





eHealth Exchange<sup>TM</sup>

THANK YOU FOR YOUR PARTICIPATION

---

BeMyQHIN.com