

March 12, 2024

TEFCA Monthly eHealth Exchange Technical Webinar Updated (Simplified) TEFCA Checklist

Eric Heflin, Consultant

eHealth Exchange™

Agenda

- Monthly TEFCA Technical Webinars
- ONC/HHS/RCE Announcement
- TEFCA Overview - Reference
- TEFCA Monthly Technical Webinar Series
- TEFCA Readiness Checklist Updates (Simplifications)
- Open Discussion / Q&A
- For More Information (Including Office Hours)

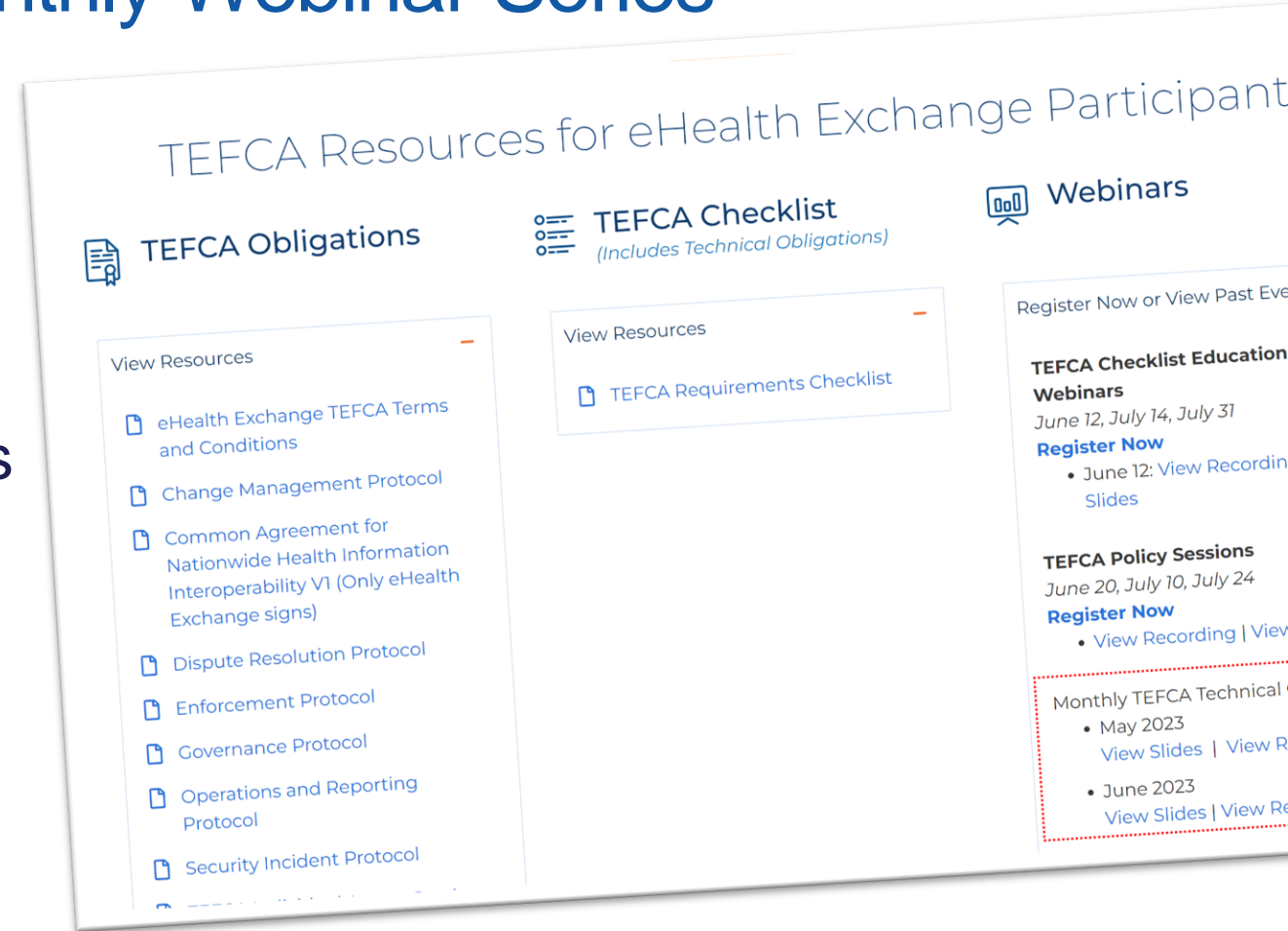
Monthly TEFCA Technical Webinars

eHealth Exchange TEFCA Monthly Webinar Series

- Today's webinar is part of a series
- Prior webinars covered:
- TEFCA Readiness Checklist
- Individual Access Services Providers
- Reporting Requirements
- Error Handling
- And more

Prior webinars can be found at:

<https://ehealthexchange.org/what-we-do/tefca-and-ehealth-exchange/>





eHealth Exchange Monthly TEFCA Technical Webinar Series

- May 2023 - *TEFCA Individual Access Services Providers Requirements*
[View Slides](#) | [View Recording](#)
- June 2023 - *TEFCA Directory, Errors, Logs, and Reporting Requirements*
[View Slides](#) | [View Recording](#)
- July 2023 - *TEFCA Draft Monthly and Quarterly Reports Review*
[View Slides](#) | [View Recording](#)
- August 2023 - *TEFCA Updates and Aggregated Patient Discovery Requirement*
[View Slides](#) | [View Recording](#)
- September 2023 - *TEFCA Hub Development Updates*
[View Slides](#) | [View Recording](#)
- October 2023 - *Validation Status for the eHealth Exchange Hub, Individual Access Services Provider (IAS) SAML Simplifications, Lesson's Learned, New potential Purpose of Use*
[View Slides](#) | [View Recording](#)
- November 2023 - *TEFCA FHIR Support, TEFCA Hub Technical Readiness, New QHIN Technical Framework, TEFCA Directory, Lessons Learned from Initial Sub-Participants*
 - TEFCA Reporting Requirements: RCE Updates
[View Slides](#) | [View Recording](#)
- December 2023 - *ONC/HHS/RCE Announcement, Updated FHIR Roadmap for TEFCA Exchange, TEFCA Hub Technical Readiness*
[View Slides](#) | [View Recording](#)
- TEFCA Checklist Education Webinars
 - June 12: [View Recording](#) | [View Slides](#)
 - July 14: [View Recording](#)
 - July 31: [View Slides](#)
- Source: <https://ehealthexchange.org/what-we-do/tefca-and-ehealth-exchange/>

ONC/HHS/RCE Announcement





PRESS RELEASES, RCE, THE SEQUOIA PROJECT NEWS • DECEMBER 12, 2023

ONC and The Sequoia Project Designate First TEFCA QHINs

TEFCA Goes Live On Schedule

(Washington, DC – December 12, 2023) – **The Sequoia Project**, selected by the Office of the National Coordinator for Health Information Technology (ONC) as the Recognized Coordinating Entity® (RCE™) to support the implementation of the Trusted Exchange Framework and Common AgreementSM (TEFCASM), today, on behalf of ONC, **designated the country's first Qualified Health Information Networks™ (QHINs™)** in a Common Agreement signing event alongside HHS Secretary Xavier Becerra, HHS Deputy Secretary Andrea Palm, and National Coordinator for Health Information Technology Micky Tripathi, in Washington, DC.

The newly designated QHINs include eHealth Exchange, Epic Nexus, Health Gorilla, KONZA National Network, and MedAllies.

"The QHIN selection and onboarding process was necessarily arduous to ensure the pioneering



Meet the Designated QHINs

Below are organizations that have successfully completed the Qualified Health Information Network™ (QHIN™) onboarding process and are recognized as Designated QHINs for TEFCA exchange. There are additional Candidate QHINs still in the onboarding phase listed [here](#).



VISIT WEBSITE →



VISIT WEBSITE →



VISIT WEBSITE →



VISIT WEBSITE →



VISIT WEBSITE →

The largest healthcare information network in the country **and now a Designated QHIN under TEFCA**

Active in all 50 states, eHealth Exchange is a Network of Networks connecting federal agencies and non-federal healthcare organizations so medical data can be exchanged nationwide to improve patient care and public health.



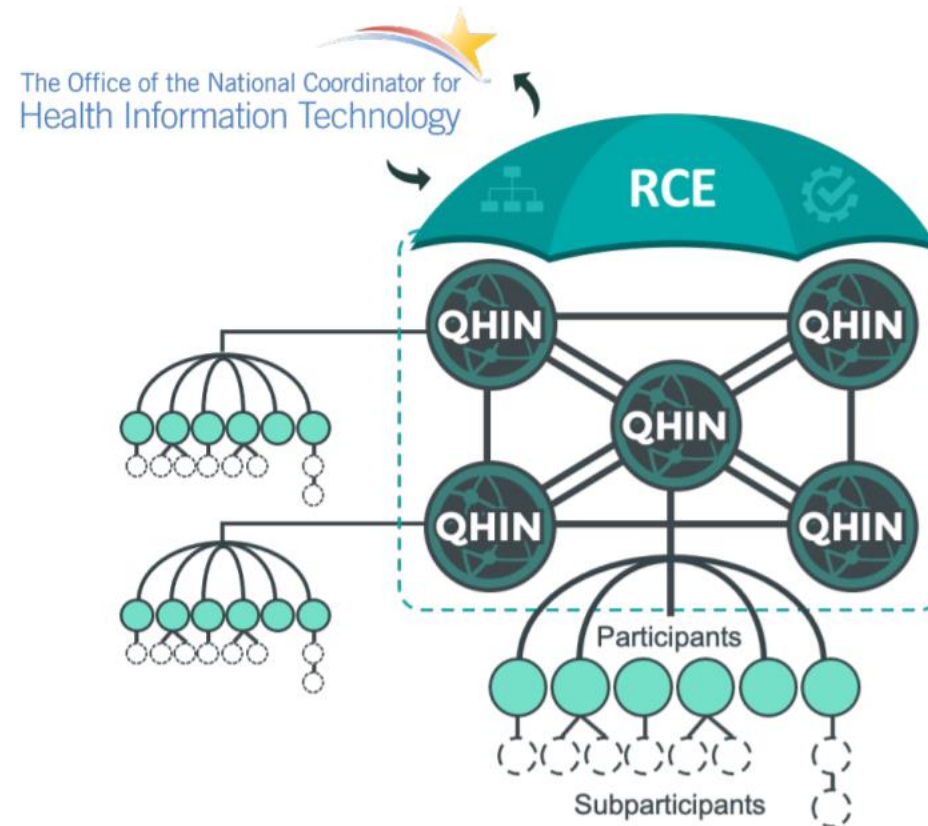
« NEWS

eHealth Exchange Among First To Achieve TEFCASM Qualified Health Information NetworkTM (QHINTM) Designation

Today, **eHealth Exchange** announced it's been designated as a Qualified Health Information NetworkTM (QHINTM) under the Trusted Exchange Framework and Common AgreementSM (TEFCASM). This places eHealth Exchange's electronic data-sharing network among the country's first Designated QHINs to go live and operationally ready for exchange with other Designated QHINs.

TEFCA Overview - Reference

How Does TEFCA Work?



- ← ONC defines overall policy and certain governance requirements.
- ← RCE provides oversight and governing approach for QHINs.
- ← Qualified Health Information Networks (QHINs) connect directly to each other to facilitate nationwide interoperability.
- ← Each QHIN connects Participants, which connect Subparticipants.

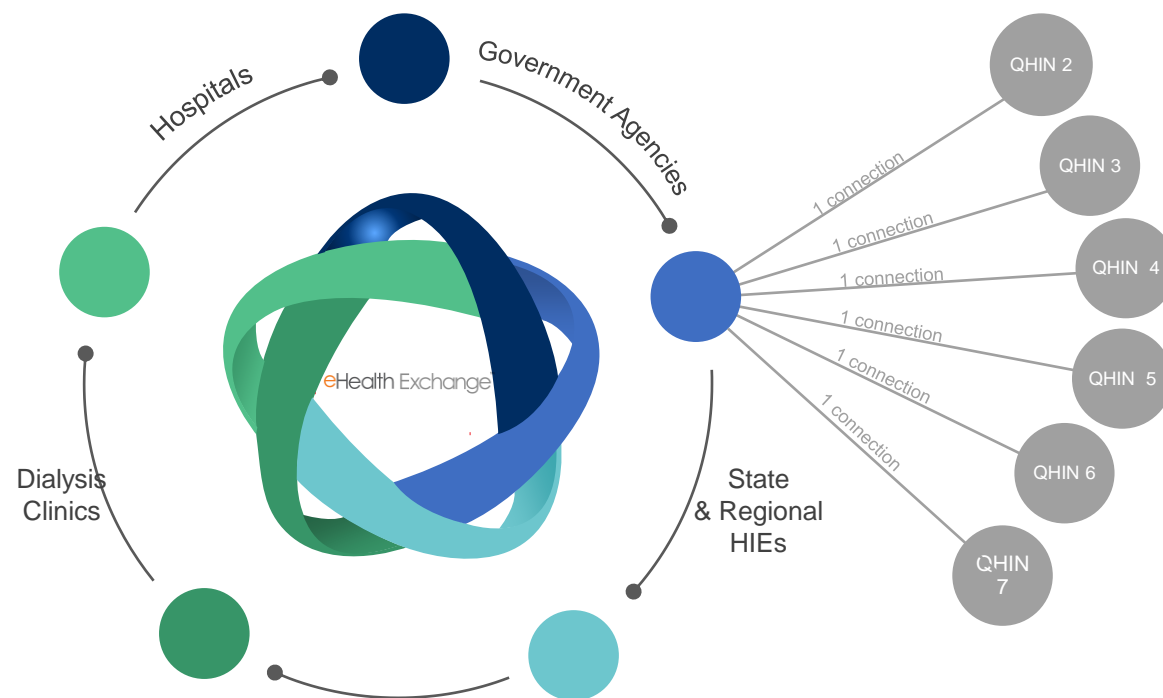
What is the Trusted Exchange Framework (TEFCA)?

It's a federally endorsed governance framework for **cross-network** exchange of healthcare records.

Similar to Carequality, it's a framework, and not a network:

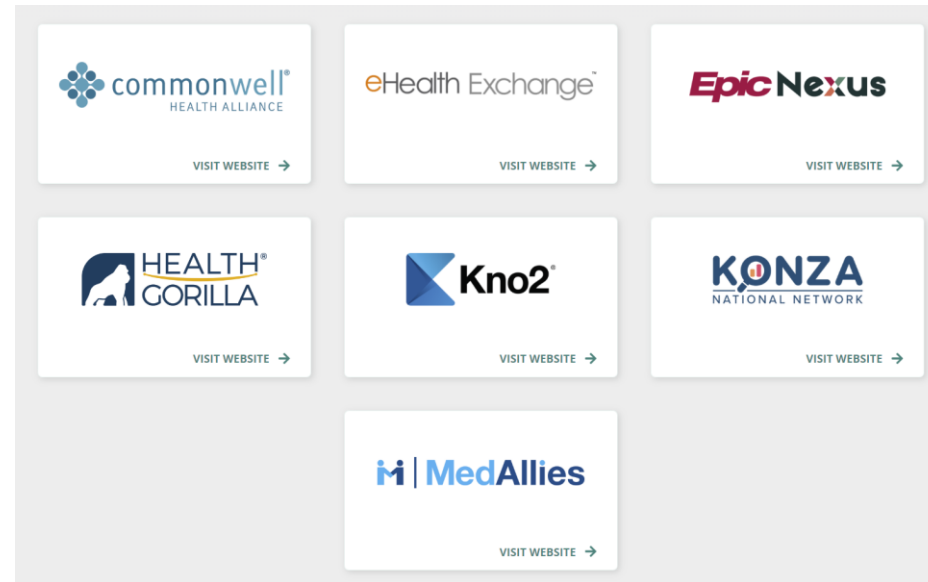
- Technical & policy agreements
- Governing structure
- Federated architecture

Enables healthcare organizations connected to a TEFCA Qualified Health Information Network (QHIN) to exchange patient data with other healthcare organizations connected to other QHINs.



Which networks plan (or currently) exchange via TEFCA?

The HHS announced that the [eHealth Exchange](#) is one of six applicants that have had their applications to become a Qualified Health Information Network (QHIN) approved



It's not yet clear which healthcare organizations will agree to exchange via TEFCA. Will yours?

Source: <https://rce.sequoiaproject.org/candidate-qhins/>

eHealth Exchange™

Inaugural QHIN Candidate

Intent to Participate from 11 HIEs Operating in 14 States and Washington D.C. Serving up to 126 Million Patients



AL, AK, AZ, CA, CO, CT, DC, GA, IA, IN, MD, NE, TX, VA, and WV

What's changed?

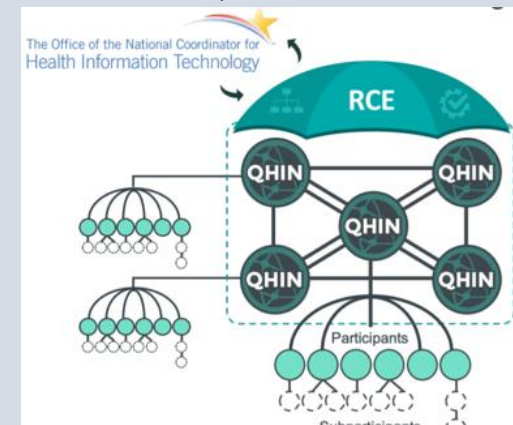
Before: eHealth Exchange Connected with TEFCA

Your organization can exchange with the eHealth Exchange's 320+ health systems, federal agencies, providers and provider collaboratives.



After: eHealth Exchange Went Live on TEFCA

Option for your organization to **also** exchange with healthcare organizations participating in TEFCA QHINs.





How is the eHealth Exchange different?

eHealth Exchange

- ✓ National non-profit focused on the Public Good
- ✓ Single technical connection instead of hundreds
- ✓ Vendor agnostic
- ✓ 24x7x365 monitoring
- ✓ Enforced content quality assurance
- ✓ Analytics dashboard
- ✓ Broad federal agency connectivity
- ✓ Trust (no patient tracking, no selling data)

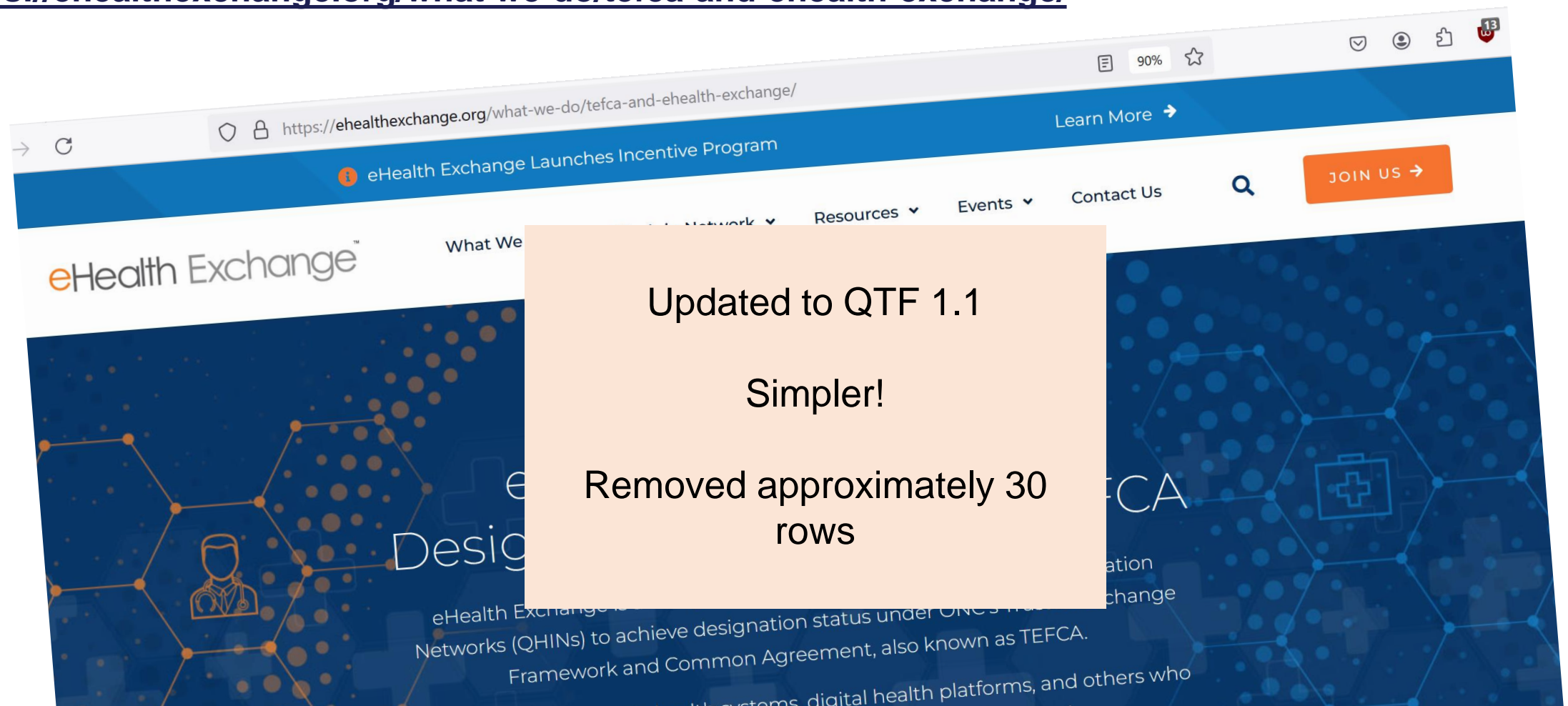
Other Networks

- ⚠ Multiple technical connections
- ⚠ Vendor specific
- ⚠ Limited to no 24x7x365 monitoring
- 🛑 No mandatory content testing
- ⚠ No or limited analytics portal dashboard
- 🛑 No broad federal agency connectivity

TEFCA Readiness Checklist Updates

For More TEFCA eHealth Exchange Information

- <https://ehealthexchange.org/what-we-do/tefca-and-ehealth-exchange/>



TEFCA Participant Flow-Down Checklist: Simpler!

- TEFCA Checklist (focus on technical requirements)
- We have additional clarify on several optional v mandatory requirements
- Now that we're live, we also have additional clarity on QHIN Hub v Participant requirements
- Removed optional requirements
- Added QTF v1.1 updated requirements
- Referenced Protocols as an external document set
- Added conformance statement cross references
- Added change log
- Updated references
- Other Checklist items (not covered today)
- Testing Requirements
- Legal Flow-Downs
- eHealth Exchange TEFCA Protocols





TEFCA Checklist Review Topics

- New organizational structure elements
- Live interactive walkthrough of the updated checklist at a high level
- Q&A
- For more information



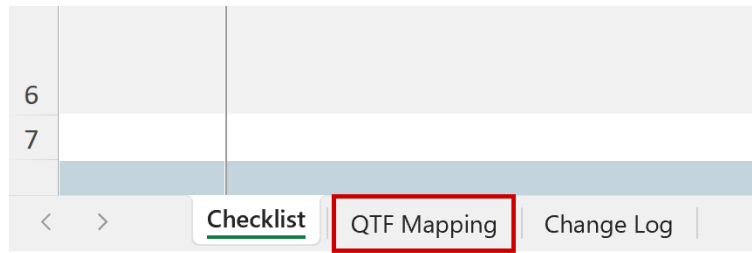
New QTF v1.0 <--> v1.1 Mapping Columns

- New column with current (v1.1) QTF conformance requirements
- Checklist maps to prior (v1.0) requirements for continuity

ID	Additional Considerations ‡	Citations/Links	RCE Requirement(s) ####	QTF 1.0 (Depreciated)
PSS-01	The eHealth Exchange QHIN Hub operates on a pass-through basis, so Participants must ensure their C-CDA content is USCDI V1 compliant. Optionally, participants may use the Hub ITP content testing tool to verify that production representative documents comply with USCDI v1.	https://www.healthit.gov/isa/united-states-core-data-interoperability-uscdi https://ehealthexchange.org/wp-content/uploads/2023/03/TEFCA-Policy-Participant-Education-03-15-2023.pdf	QTF-052 QTF-100	QTF-047 QTF-092

New QTF Conformance Statements Cross Reference

- QTF v1.0 and v1.1 have different conformance statement numbers
- Note the new [QTF Mapping] checklist tab



	A	B	C	D
1	QHIN Technical Framework (QTF) Conformance Statements Cross Reference			
2				
3				
4	QTF version 1	Classification	QTF version 1.1	Description
5	QTF-001	no change	QTF-001	
6	QTF-002	no change	QTF-002	
7	QTF-003	no change	QTF-003	
8	QTF-004	no change	QTF-004	
9	QTF-005	no change	QTF-005	
10	QTF-006	no change	QTF-006	
11	QTF-007	maps with change	QTF-007	Dropped the "1.2" reference regarding TLS. The QTF now, elsewhere, indicates BCP 195 MUST be used for both TLS 1.2 and 1.3.
12	QTF-008	no change	QTF-008	
13	QTF-009	no change	QTF-009	
14		new	QTF-010	Adds "MUST" constraint on use of TLS 1.2/1.3. See the conformance statement for more.
15	QTF-010	numeric change	QTF-011	
16	QTF-011	numeric change	QTF-012	

- New / updated checklist [Change Log] tab

35	2/26/2024	1.8	Mike M, Mike Y and Jay J	Removed "May" or "Sho
----	-----------	-----	--------------------------------	-----------------------

<
>
Checklist
QTF Mapping
Change Log

18	1/25/2024	1.7	Eric Heflin	Removed requirements for monthly downtime reports. RCE clarified this requirement is only for QHINs and not Participants or Subparticipants
19				Added column for QTF 1.1 requirements, added QTF 1.0 v 1.1 cross reference tab
20				Updated citations to QTF 1.1 document
21				Added IHE ITI-80 v1.6 requirements
22				Added updated testing and onboarding text
23				Removed MFA since that's not a current RCE requirement
24				Added Concise C-CDA v2
25				Removed TLS and BCP IETF requirements since the RCE clarified these only apply to QHINs
26				Updated directory requirements
27				Updated the SLA text
28				Updated the security incident reporting text
29				Added new RCE-specific PurposeOfUse Values
30				Removed and added new rows for QTF 1.1
31				Updated descriptions and change control column
32				Removed ATNA logging requirements as a flow-down
33				Removed Future requirements that are now in eHealth Exchange Protocols or RCE SoPs

Readiness Checklist Directory & Reporting

- <https://ehealthexchange.org/what-we-do/tefca-and-ehealth-exchange/>
- Interactive walkthrough of full checklist

eHealth Exchange
Readiness Checklist for Connectivity to the Trusted Exchange Framework (TEFCA) via eHealth Exchange (Version 1.0)

Overview: While the eHealth Exchange Hub will address many of the new TEFCA requirements on its Participants' behalf, the requirements below represent Trusted Exchange Framework (TEFCA) requirements that the eHealth Exchange Hub must satisfy not only existing eHealth Exchange requirements, but also all of the supplemental TEFCA requirements below. The requirements below may replace, change, or add to the existing eHealth Exchange requirements.

This is a living document: As the Recognized Coordinating Entity (RCE) and Office of the National Coordinator (ONC) publish and revise artifacts at <https://rce.sequoiaproject.org/tefca-and-rce-resources>, this document will be updated accordingly.

Audience: Potential eHealth Exchange QHIN Participants seeking to understand the eHealth Exchange QHIN's Participant TEFCA requirements. The reader should have a basic knowledge of eHealth Exchange, and subsequently discuss with you your plans to connect to the Trusted Exchange Framework.

General Operational Concept: The eHealth Exchange QHIN Hub acts as a bi-directional TEF gateway for eHealth Exchange Participants that don't opt-out of eHealth Exchange TEFCA exchange. The eHealth Exchange requirements flow down to Participants, and their Sub-Participants.

Terms used (Also see the References section far below):
TEF = Trusted Exchange Framework, the structure consisting of QHIN-to-QHIN health data exchanges, established by the TEFCA legal agreement, SOPs, and technical specifications.
QHIN = Qualified Health Information Network.
eHealth Exchange QHIN Hub = A unique instance of the eHealth Exchange Hub technology facilitating TEFCA transactions.

Performance & Service Specification Requirements	Additional Considerations *	Citations/Links
		https://www.healthit.gov

Updated References

- Please see this section of the TEFCA Flowdown Checklist for more details, especially the eHealth Exchange analysis and educational materials for TEFCA Participants:



References:

eHealth Exchange TEFCA Terms & Conditions, TEFCA educational materials, TEFCA (Draft) preools, etc.

eHealth Exchange Technical Specifications

USCDI v1

Project US@

IHE ITI Tech Framework v17+

IHE ITI Tech ITI-80 v1.6

TEFCA QHIN QTF v1.1

TEFCA QHIN QTF v1.0 (*obsolete*)

Concise C-CDA v2.0

Older IHE ITI Tech Framework v17 cited by the QTF

ONC RCE TEFCA Resources

RCE TEFCA flow down provisions

RCE Common Agreement

RCE Individual Access Standard Operating Procedure

NIST 800-63A Digital Identity Guidelines

<https://ehealthexchange.org/what-we-do/tefca-and-ehealth-excl>

<https://ehealthexchange.org/testing-program/technical-specifica>

<https://www.healthit.gov/isa/sites/isa/files/2020-10/USCDI-Versi>

<https://oncprojecttracking.healthit.gov/wiki/download/attachmer>

<https://profiles.ihe.net/ITI/TF/index.html>

https://www.ihe.net/uploadedFiles/Documents/ITI/IHE_ITI_Suppl

<https://rce.sequoiaproject.org/wp-content/uploads/2023/12/QT>

<https://rce.sequoiaproject.org/wp-content/uploads/2022/01/QT>

<https://carequality.org/wp-content/uploads/2022/03/Improve-C>

https://www.ihe.net/uploadedFiles/Documents/ITI/IHE_ITI_TF_R

<https://rce.sequoiaproject.org/tefca-and-rce-resources/>

<https://rce.sequoiaproject.org/summary-of-required-flow-down->

<https://rce.sequoiaproject.org/wp-content/uploads/2022/01/Co>

<https://rce.sequoiaproject.org/wp-content/uploads/2022/09/Fin>

<https://pages.nist.gov/800-63-3/sp800-63a.html>

Q&A/Open Discussion



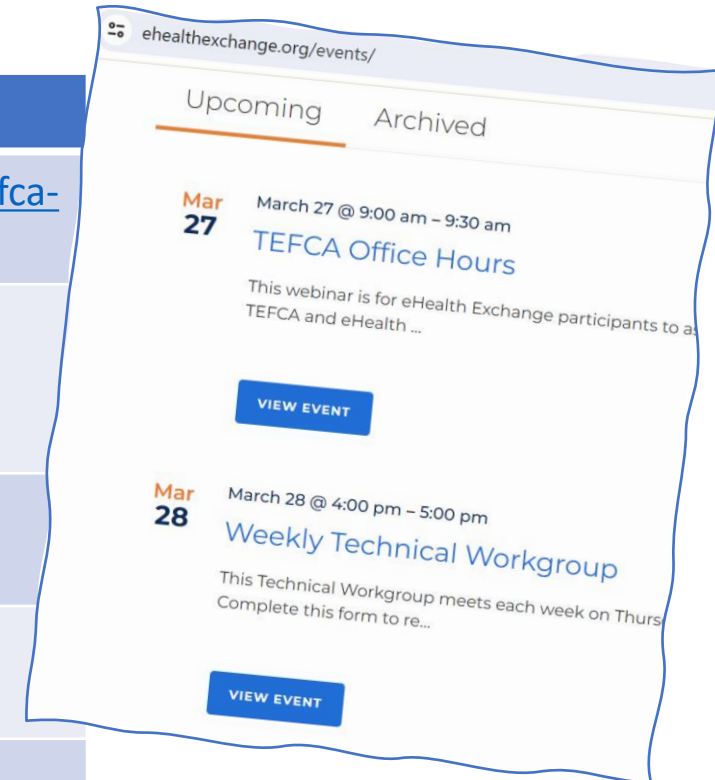
For More Information



eHealth Exchange™

How might I obtain additional information?

How	When	Where
1. Visit eHealth Exchange Web Site	Any time	https://ehealthexchange.org/what-we-do/tefca-and-ehealth-exchange
2. Monthly Participant Web Meetings	Typically, the 3rd Thursday of Each Month at 1 pm ET	https://ehealthexchange.org/events
3. Monthly TEFCA Technical Call	See web site	https://ehealthexchange.org/events
4. Email	Any time if you have a specific question	administrator@ehealthexchange.org
5. Monthly TEFCA Office Hours (Q&A)	See web site	https://ehealthexchange.org/events





Major Technical Differences eHealth Exchange QHIN Participants Must Support

- Adopt USDCI v1 data classes and elements
- Adhere to Project US@ patient addressing
- Adopt IHE ITI Technical Framework Revisions 17.0 (versus Revision 8.0)
- Accept aggregated XCPD responses
- New PurposeOfUse values
- Various requirements such different consent attribute structure, sub-participant directory entries and detailed reporting, onboarding log submissions, specific test patients, and quarterly reporting.

Next Steps

1. Review the published policy documents (not discussed today)
2. Review the TEFCA Readiness Checklist
3. Let the eHealth Exchange staff know of your organization's intentions (if you haven't already)

email: administrator@ehealthexchange.org