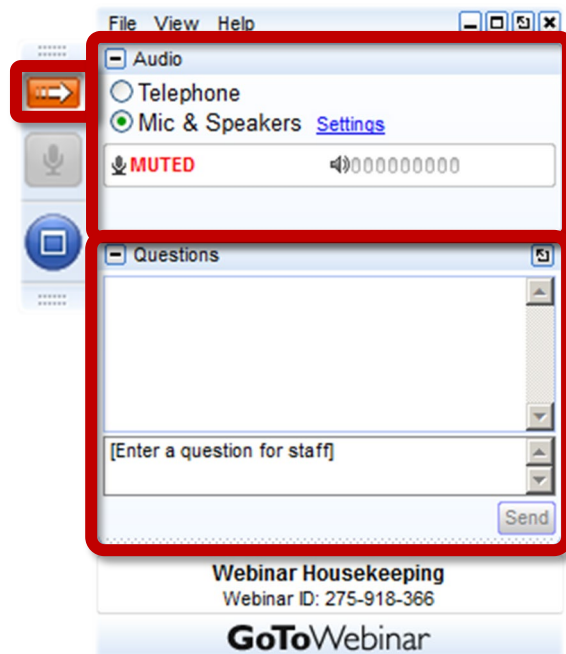


All Participant Call

January 2025



How do I participate?



Your Participation

Open and close your control panel

Join audio:

- Choose "Mic & Speakers" to use VoIP
- Choose "Telephone" and dial using the information provided

Submit questions and comments via the Questions panel

Note: Today's presentation is being recorded and will be provided within 48 hrs

Today's Topics

2025 Roadmap	Kathryn Bingman
QHIN Update	Tina Feldmann
HEDIS Reporting – NCQA Bulk FHIR Coalition	Tiffanie Hickman
Trust and Transparency Steps	Ashley Green
Innovation Lab Proof of Concept – What's New and Next?	Mike Yackanich John McBride
Hub Maintenance – Network Load Balancer Upgrade	Mike Yackanich
News and Event Updates	Tina Feldmann
Information & Resources	Ashley Green
Q&A	Anyone

2025 Roadmap



2025 Roadmap*



TEFCA

Exchange Beyond Treatment

- Expand Individual Access
- Expand Public Health Exchange
- RLS Enhancements/Optimization
- Go-Lives for:
 - Healthcare Operations
 - Payment

Reduce Burden

Provider-Payer Exchange via Networked FHIR

- Prior Authorizations
- Clinical Data Exchange (CDex)
- Payer Data Exchange (PDex)
- Bulk Data Exchange
- HL7 Da Vinci Accelerator

Empower Public Health

New Capabilities via Networked FHIR

- Expand FDA Adverse Event
- Expand Electronic Case Reporting
- Expand Case Investigation Queries
- HL7 Helios Accelerator
- NIH All of Us

Scale FHIR

Enhance and Automate Network Build & Maintenance

- My Directory Portal
- Dynamic Client Registration
- HL7 FAST Accelerator

Data Quality

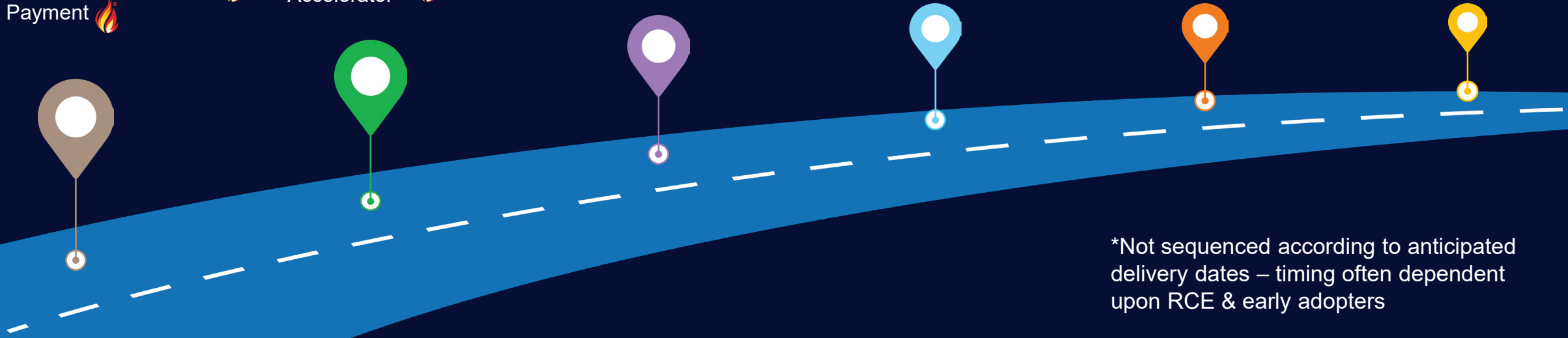
Enhance Content Sampling Capabilities

- USCDI Content Validation
- FHIR Content Testing
- Option for Participants to Confirm the Production Data they Receive Conforms with Standards

Analytics

Dashboard Enhancements

- Display FHIR Transactions
- Identify Large Volume Changes
- Display Purpose of Use

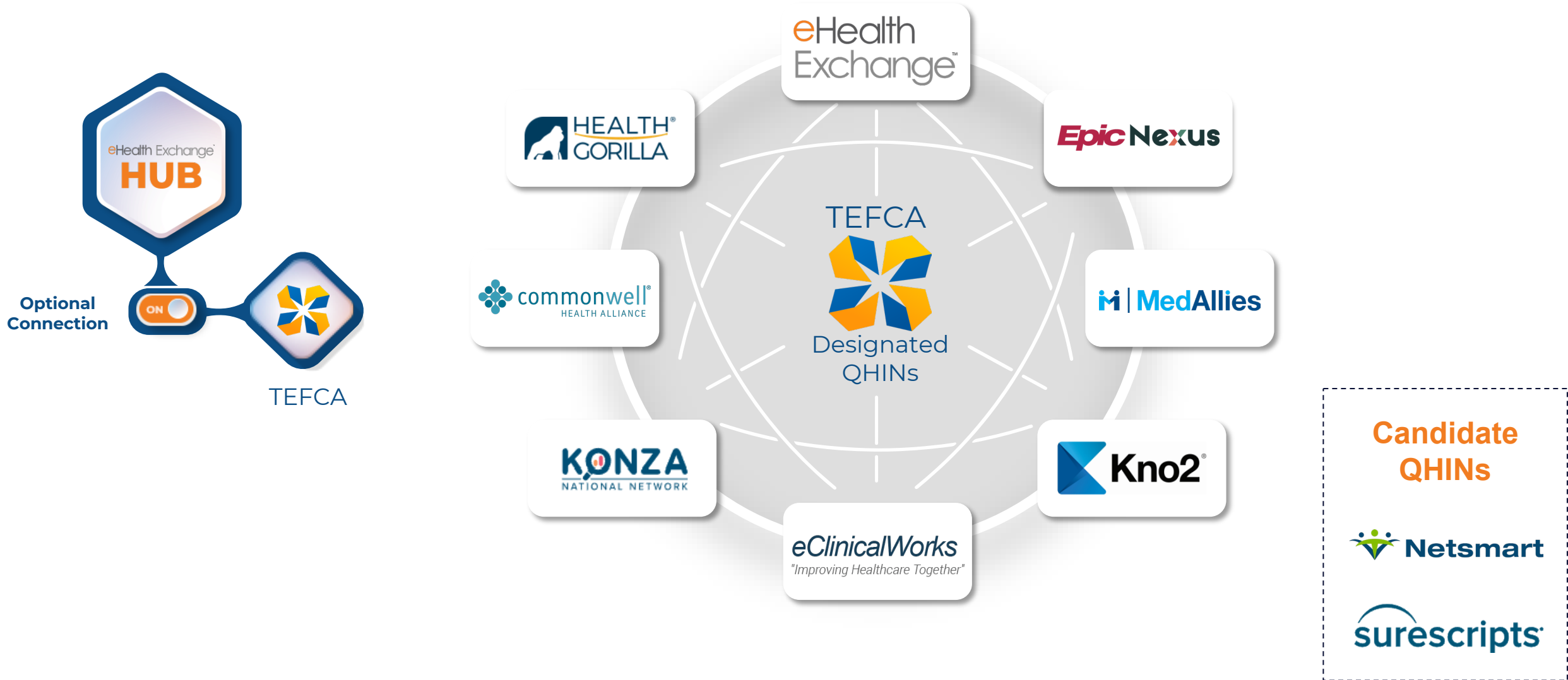


*Not sequenced according to anticipated delivery dates – timing often dependent upon RCE & early adopters

QHIN Update



Designated Qualified Health Information Networks





eHealth Exchange QHIN Participant Stages

Live



CRISP Shared Services
One Health Record
APHL
INDIAN HEALTH SERVICE
PHS · 1955

**1 Federal Agency,
2 HIEs, and
Nationwide Public Health**

Testing



C³ HIE
GEORGIA HEALTH INFORMATION NETWORK
ethIN
Manifest MEDEX

4 HIEs

Intent to Participate



BIG SKY CARE CONNECT
contexture™
Creating connections. Improving lives.
CyncHealth
Indiana Health Information Exchange
KeyHiE
Keystone Health Information Exchange®
SCHIO
Serving Communities Health Information Organization
Community Interoperability Since 1996
SHARE
State Health Alliance™ Records Exchange
FROM NUMBERS TO KNOWLEDGE
VHI
VIRGINIA HEALTH INFORMATION

8 HIEs

2025 TEFCA Webinar Series

TEFCA WEBINAR

TEFCA Updates

📅 February 11, 2025

03:30 PM - 04:30 PM | NO VENUE FOUND

All are welcome to join this quarterly webinar to stay informed on TEFCA from eHealth Exchange, one of the first Designated QHINs.

[REGISTER NOW](#)

TEFCA WEBINAR

TEFCA Updates

📅 May 13, 2025

03:30 PM - 04:30 PM | VIRTUAL

All are welcome to join this quarterly webinar to stay informed on TEFCA from eHealth Exchange, one of the first Designated QHINs.

[REGISTER NOW](#)

TEFCA WEBINAR

TEFCA Updates

📅 August 12, 2025

03:30 PM - 04:30 PM | VIRTUAL

All are welcome to join this quarterly webinar to stay informed on TEFCA from eHealth Exchange, one of the first Designated QHINs.

[REGISTER NOW](#)

<https://register.gotowebinar.com/register/3681677746698149216>

HEDIS Reporting – NCQA Bulk FHIR Coalition

Bulk FHIR Overview and Objectives

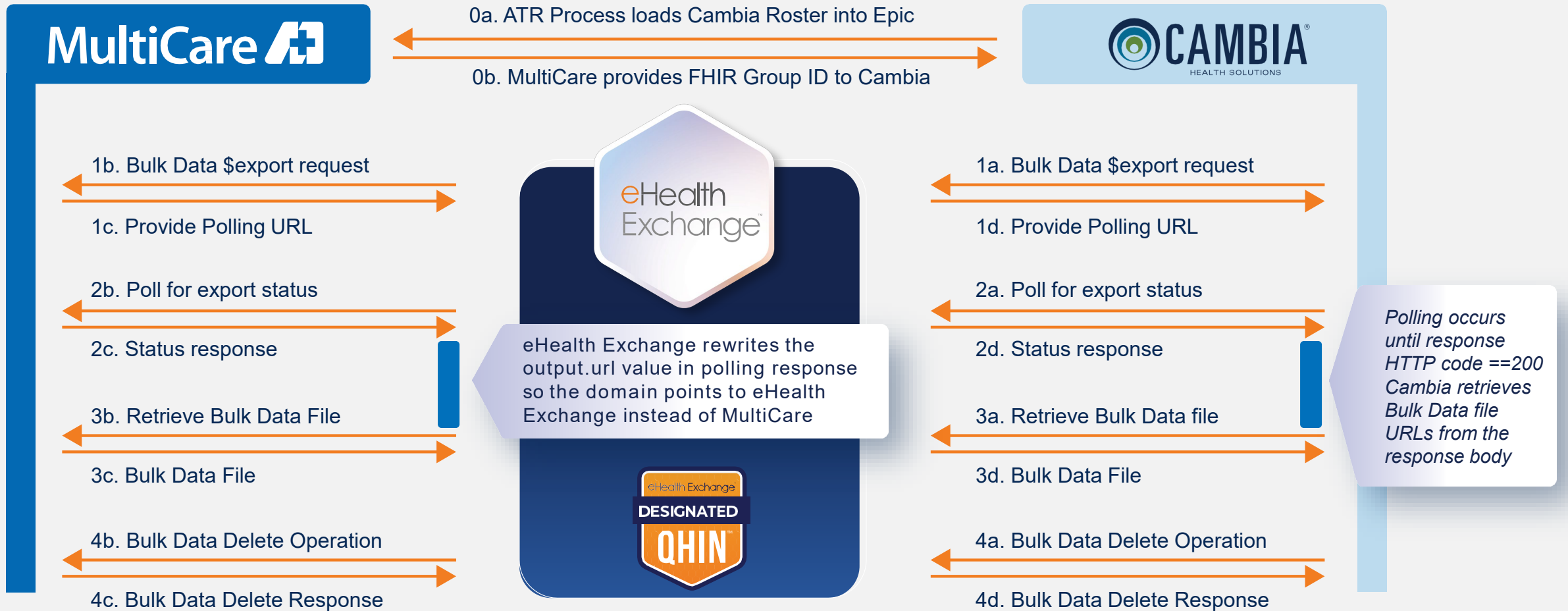
- The objective for the Bulk FHIR API is to exchange the clinical data needed for HEDIS measurement for a cohort of 5 - 10K patients in a matter of minutes.
- The pilot will share insights and analytics on:
 - Performance of regulated Bulk FHIR APIs
 - Quality of Bulk FHIR data
- The following HEDIS Measures were used for the pilot
 - Controlling High Blood Pressure (CBP)
 - Depression Screening and Follow-Up for Adolescents and Adults (DSFE)
 - Hemoglobin A1c Control for Patients With Diabetes (HBD)

Progress Report

- Cambia and eHealth Exchange completed the on-boarding the Bulk FHIR API test endpoints.
- The MultiCare team set up Bulk FHIR API in a test environment and worked through on-boarding eHealth Exchange and then Cambia for Testing.
- Participant perspectives:
 - MultiCare (Provider System)
 - eHealth Exchange (QHIN)
 - Cambia Health Exchange (Health Plan)
- Testing was completed for the three HEDIS measures.

HL7 Bulk FHIR

Payers retrieve data for entire roster for HEDIS Reporting
 HL7 Da Vinci Member Attribution & HL7 Bulk FHIR provide scalability



Bulk FHIR Proxy - Bulk Data Poll - Demo



NCQA Next Steps

- Set up Bulk FHIR end points in Production Environment.
 - API Performance Metrics
 - Gap Analysis
 - Exception Reports
 - General Report outs
 - General Data Quality Assessment
-
- For more information on the NCQA Bulk FHIR Coalition go to:
[Bulk FHIR API Quality Coalition - NCQA](#)

Trust & Transparency Steps



Trust & Transparency Enhancement Steps



OPP #17 Sub-Participant Identification Information Webinar

This OPP went into effect July 25, 2024. The policy requires participants to populate the eHealth Exchange directory with sub-participants and update messages to identify the entity/organization originating the request for data by November 25, 2024.

If you were unable to join one of the webinars, you can now access the slides and watch the recording for more details.

[Watch Recording →](#)

[View Slides →](#)



eHealth Exchange Proof of Concept / Innovation Lab

What's New and *Next*

What's New and *Next*

What's New?

- Task Based Exchange Enhancements
- CDS Hooks Prototype

What's Next?

- CI/CD Pipeline
- SSRAA (Security for Scalable Registration, Authentication and Authorization)
- Use of Standardized Ports

What's New?

Task Based Exchange Enhancements

Nominal Workflow Example

1. A requester POSTs a FHIR Task resource to the eHealth Exchange Task-Based Exchange service. The Task specifies details of the request (target responder, patient information, FHIR resources of interest, purpose of use, etc.).
2. The requester can now begin polling the Task (via GET) to check on status.
3. The Task-Based Exchange service processes the Task request, retrieves all resources requested within the Task's input[] array, and persists as ndjson payload in the Task's output[] array.
4. When data retrieval is finished, Task status is set to "completed".
5. Requester polls and finds status is "completed" and can begin to retrieve related ndjson payload. Links to the payload are contained within the Task's output[] array.

What's New?

Task Based Exchange Enhancements

- Automatic pagination retrieval
- Support for additional workflows

Use Case	Target Responder known?	Patient FHIR Resource Id at Target known?
data-query	Yes	Yes
data-query-patient-match or data-query-patient-search	Yes	No
data-query-patient-fanout ¹	No	No
data-query-patient-fhirfanout ²	No	No

¹ leverages XCPD HRR on eHx network. If POU is other than Treatment – this would not be an effective fanout.

² leverages states of operation to identify fan-out list of FHIR responders.

What's New?



CDS Hooks Prototype (Clinical Decision Support)

Overview

- Provide a proxy for providers to connect to multiple CDS Hook endpoints based on payer ID.

Why:

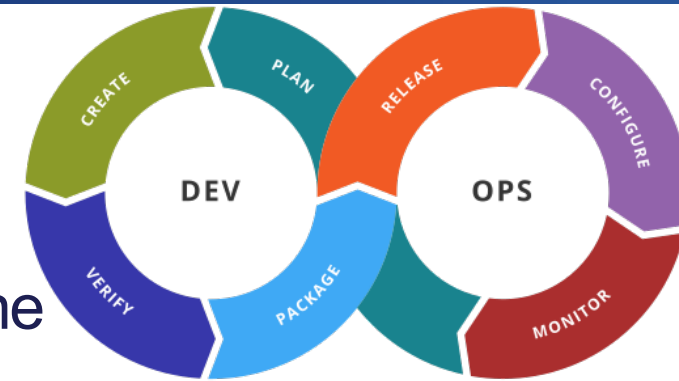
- Allows providers a single onboarding endpoint to access multiple CDS endpoints
- Built on much of the same architecture as our SMART on FHIR Proxy (Released in August 2024)

Reference

- <https://cds-hooks.hl7.org/>
- <https://hl7.org/fhir/us/davinci-pdex/cds-hooks.html>

What's Next?

Continuous Integration / Continuous Deployment automated pipeline



- What – A system that allows us to consistently test our early access prototypes on the latest versions of our technology vendor
- Why
 - Allows evaluation of new product features with minimal effort to facilitate early adoption of high value functionality in support of new and existing use cases
 - Stay current with technology vendor updates
 - Test out early features
 - Validate existing prototypes on newer versions of products

What's *Next*?

Security for Scalable Registration, Authentication and Authorization (SSRAA)

- What does this mean?
 - OAuth-based security, with additional requirements
 - Dynamic client registration (DCR) must be supported
 - Custom hl7-b2b extension (asserting OrgId, POU, etc.)
- Why do we care?
 - TEFCA Facilitated FHIR will require adoption and use of SSRAA, effective Jan 2026.
 - Our technology stack fully supports OAuth 2.0, including dynamic client registration, but customization is required for the layered UDAP and SSRAA requirements.

What's Next?

Use of Standard Ports

- There are multiple service instances on the POC server.
- These instances represent different products and versions of our technology platform.
- **Each instance has its own IP port assignment.**



This introduces problems as oftentimes organizations can only use standard ports!



Mitigation is to migrate all services to standard ports (e.g., 443) and use virtual hosts for routing to corresponding service endpoint.

Hub Maintenance

Network Load Balancer Upgrade

Network Maintenance

Maintenance Window Date/Time: **TBD**

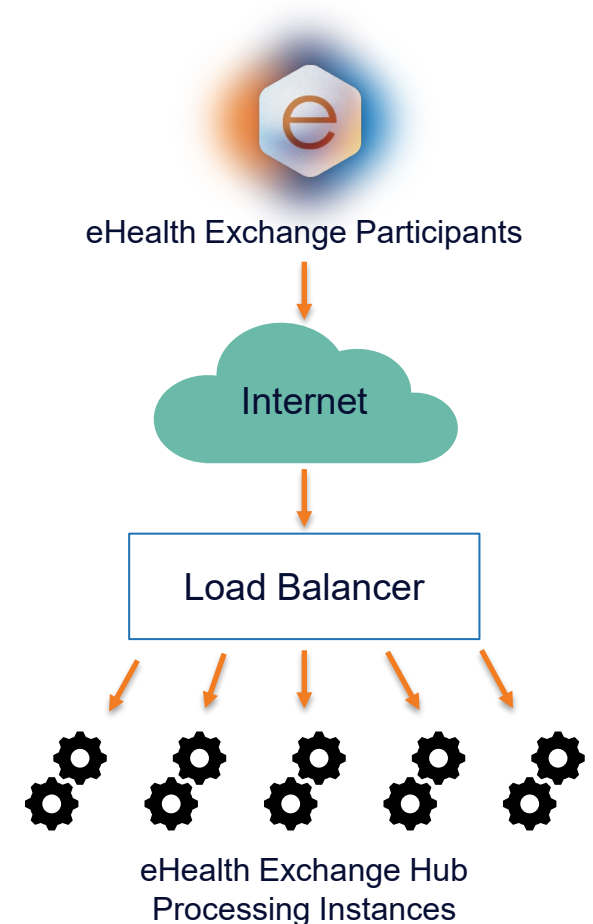
The eHealth Exchange Hub environments will be migrated to new network Load Balancers

What is a “Load Balancer”?

- Load Balancers allow us to distribute requests equally across multiple processing instances (aka “scale out” architecture).
- By taking advantage of multiple processing instances, we can address volume increases quickly and efficiently.

Key Points regarding the migration

- **The migration will require a service interruption.** Expectation is between 30 and 90 minutes.
- The migration will occur on a Saturday morning - which is period of lowest network volume.
- No changes will be required by our participants (e.g., public IP addresses will not change).
- eHealth Exchange will provide three (3) weeks advance notice to participants.



News and Event Updates



Board of Directors

Oversees financial, legal, risk, & strategic aspects of the corporation



Chair

Pam Matthews, RN
East Tennessee Health
Information Network
Appointed by: Coordinating
Committee through Dec '25



Vice Chair

John Kansky
Indiana Health
Information Network
Appointed by: Coordinating
Committee through Dec '27



Treasurer

**Patti Cuartas, DMSc,
PA-C, FACHE, ACHIP**
Mount Sinai Health System
Appointed by: Coordinating
Committee through Dec '26



Secretary

Lisa Bari
Civitas Networks
for Health
Appointed by: Board
through Dec '25



Paul Biondich, MD
Indiana University School of
Medicine & Regenstrief Institute
Appointed by: Board
through Dec '27



Michael Marchant
Sutter Health

Appointed by: Board
through Dec '26



J.T. Lane
Association of State &
Territorial Health Officials

Appointed by: Board
through Dec '26



Doug Dietzman
Blue Cross Blue Shield
Association

Appointed by: Board
through Dec '27



Debbie Condrey
The Sequoia Project

Ex Officio Appointed by
Sequoia Project



Jay Nakashima
eHealth Exchange

Ex Officio Appointed by
the Bylaws

Upcoming Webinars and Conferences

January

**Civitas FHIR Deep Dive –
Da Vinci FHIR Accelerator**

Jan 8th | [View Recording](#)

HL7 FHIR Connectathon

Jan 14-16

Attending - Virtual

February

**Civitas FHIR Deep Dive –
Helios FHIR Accelerator**

Feb 5 | 2-3 pm

[Register Here](#)

March

HIMSS 2025

Mar 3-6, 2025

Speaking & Exhibiting

Booth #858

[Learn more](#)

AMIA 2025 Informatics Summit

Speaking

[Learn more](#)

Tomorrow's
TEFCA –
Expanding
Exchange

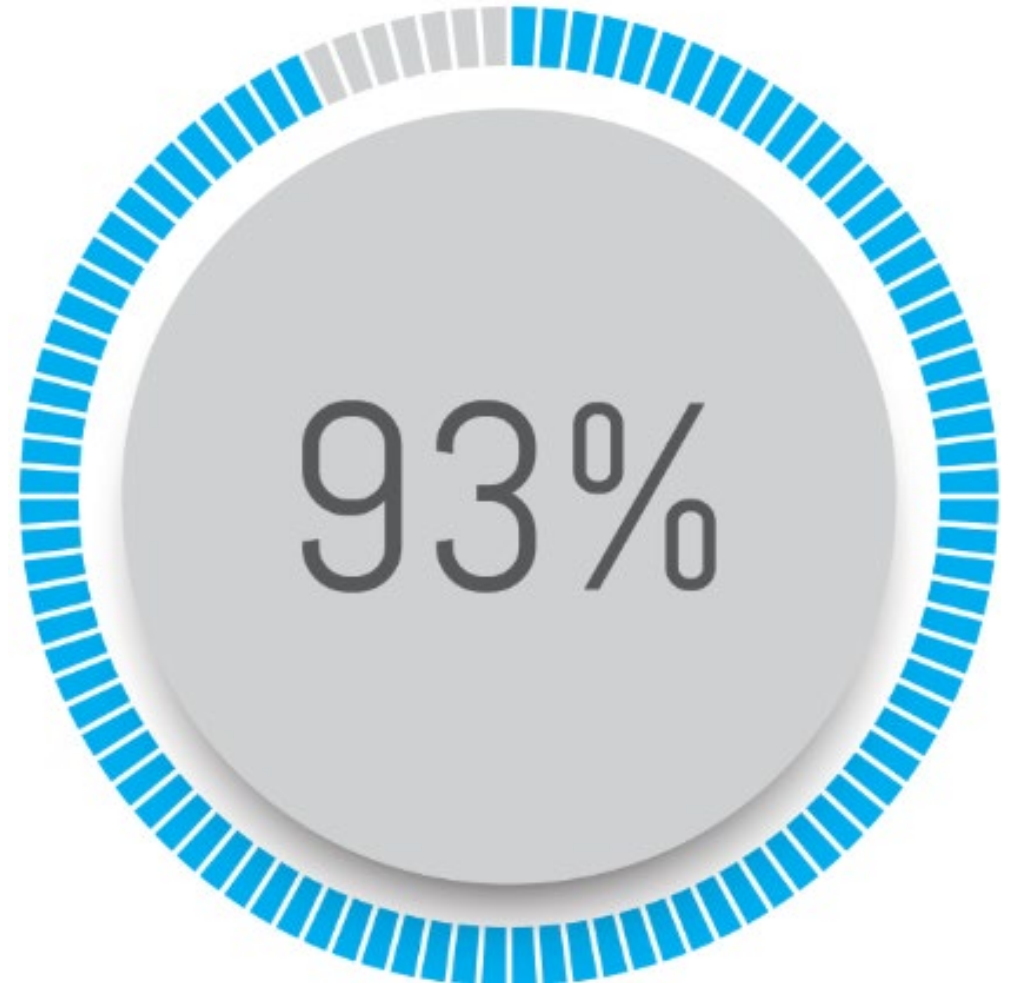
eHealth Exchange

Tomorrow's
TEFCA –
Expanding
Exchange

**175 Registrations, up from 111 in 2023
– 37% growth YoY**

Overall Feedback

- 93% Rated the meeting extremely or very useful and relevant
- 93% Agreed that they gained actionable insights or knowledge from the event
- 93% would recommend this meeting to others



Recordings and Presentations Now Available!

Ranked the top 3 presentations:

- Accelerating Data Exchange for Public Health
- Leading Trust in National Networks
- Tomorrow's TEFCA – Expanding Exchange Purposes

Access content here:

<https://ehealthexchange.org/2024-annual-meeting/>





Topics for Next Year

Survey Feedback:

- More examples of FHIR, use cases and case studies of actual implementations
- Public Health
- TEFCA
- Afternoon workshops / breakout sessions
- Impacts of new administration

Submit a topic/suggestion for next year

- Email marketing@ehealthexchange.org

Save the Date – 2025 Annual Meeting

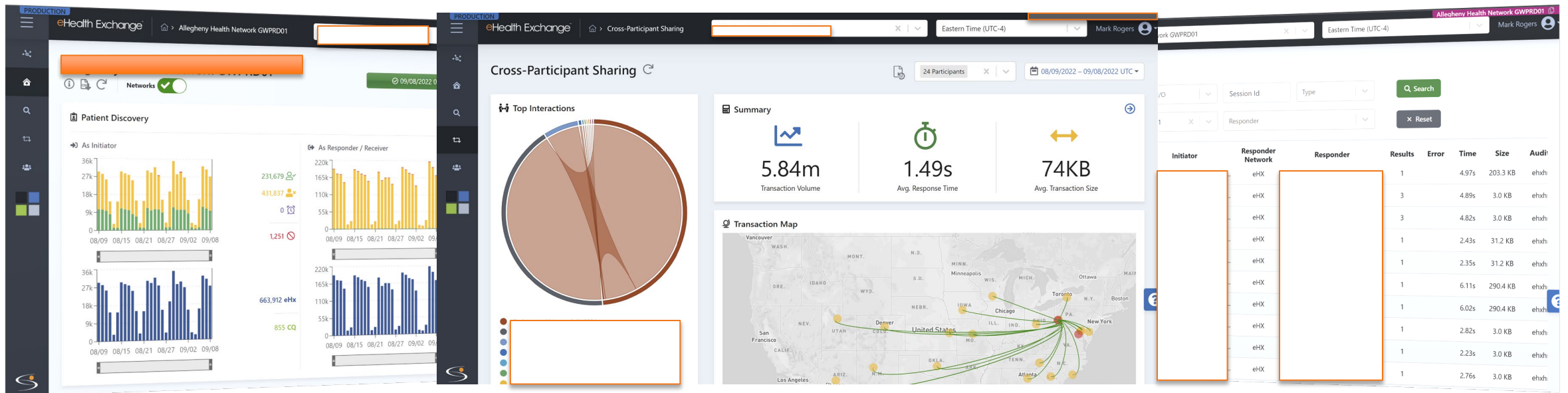


- Back to Nashville, TN
- November 18, 2025
- Co-located again with The Sequoia Project and Carequality following November 19-20, 2025
- Embassy Suites by Hilton Downtown Nashville

Information & Resources



Your Hub Dashboard – Your web portal providing interoperability insights.



- Identify transaction volume, response times, drill-down, & download.
- Who is querying your organization?
- Where are your clinicians searching?
- How much care occurs outside your organization?

Access Hub Dashboard: <https://insightsprod.ehealthexchange.org/#/hub>

Monthly Technical Work Group

Every 1st Thursday 4-5pm Eastern:

Typical Topics:

1. Technical Specifications
2. Testing
3. Hub Updates
4. Capacity planning [Final Thursday each month]

Request an invite: <https://ehealthexchange.org/technical-workgroup-form/>

Contacts for Your Organization

We want to ensure that we are reaching the right people at your organization with our communications.

- If you have had recent or past changes and are unsure if we have an updated list: email administrator@ehealthexchange.org requesting the Contact List Template to complete and return.
- The template asks name, title, phone number, email address, and what type of emails the resource should receive.
- This will assist eHealth Exchange and each Participant in knowing that the communication we send is received appropriately.

How might I obtain assistance?

What	Who	How
Certificates	DirectTrust Support	support@directtrust.zohodesk.com
Technical Support	Technical Support	servicedesk@hub.ehealthexchange.org
Testing Questions	Testing Team	testing@ehealthexchange.org
Questions about the DURSA, policy, or anything else!	Administrator	administrator@ehealthexchange.org

Visit: <https://ehealthexchange.org/contact-us/>

The logo for eHealth Exchange, featuring the word "eHealth Exchange" in a white sans-serif font. The letter "e" is orange. A small trademark symbol (TM) is located to the right of the word "Exchange". The logo is centered over a background of a hexagonal grid with orange and blue dots and lines.

eHealth Exchange™

Follow @eHealthExchange



ehealthexchange.org



eHealth Exchange™

BeMyQHIN.com