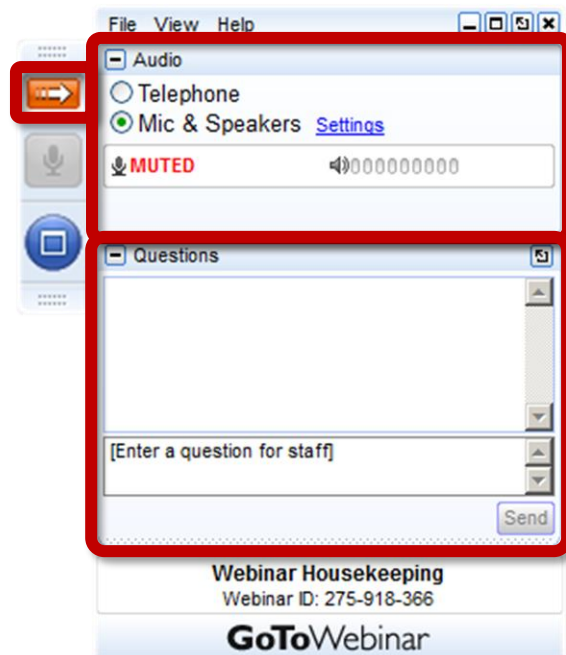


All Participant Call

February 2025



How do I participate?



Your Participation

Open and close your control panel

Join audio:

- Choose "Mic & Speakers" to use VoIP
- Choose "Telephone" and dial using the information provided

Submit questions and comments via the Questions panel

Note: Today's presentation is being recorded and will be provided within 48 hrs

Today's Topics

New Participants	Ashley Green
NIH All of Us Update	Mike McCune
Hub Network Maintenance	Mike Yackanich
Trust and Transparency Steps	Ashley Green
HIMSS 2025	Tina Feldmann
Marketing Update	Tina Feldmann
Information & Resources	Ashley Green
Q&A	Anyone

Participant Update

Congratulations to our newest Participants!



U.S. **RENAL CARE**®

U.S. Renal Care is a leading provider of in-center and home dialysis. Their experienced and compassionate kidney health providers care for our patients every step of the way.

For more than two decades, U.S. Renal Care has been providing high-quality, compassionate kidney care and dialysis to thousands of people living with kidney disease nationwide. To learn more, visit <https://www.usrenalcare.com/about/>

Committed to Improving Patient Care via Data Exchange

NIH All of Us Project Update

NIH Center for Linkage and Acquisition of Data (CLAD) HIN/HIE Pilot Design

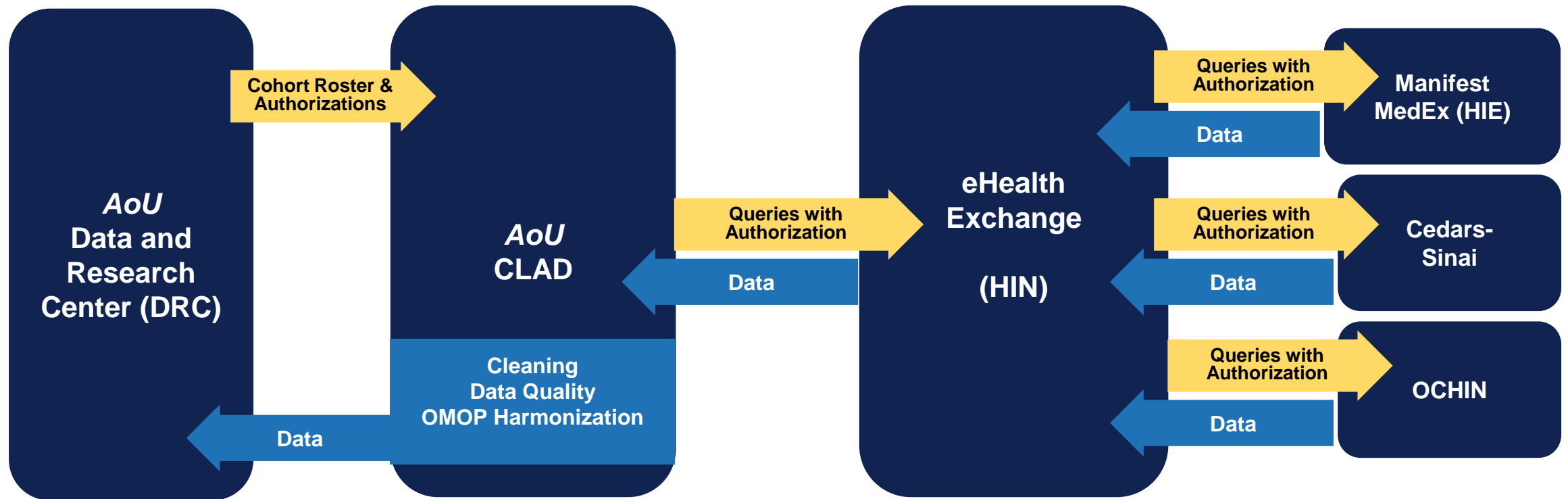
CHALLENGES

- >90% of participants consent to share EHR, yet only ~69% have some EHR records in the current CLAD clinical data repository.
- Current methods of collecting EHR data are expensive and remain fragmented.

PILOT GOAL

- Acquire EHR data from HINs and HIEs that may fill gaps in records currently received for the study participants and facilitate the creation of longitudinal EHR records.
- Investigate the success rate of clinical data requests using the RESEARCH purpose of use.
- Ensure adequate coverage of the AoU under-represented in biomedical research (UBR) populations.

NIH Center for Linkage and Acquisition of Data (CLAD) HIN/HIE Pilot Design



Two Major Technical Goals

- Retrieve clinical data using the eHealth Exchange network

AIM 1

- Retrieve clinical data from NIH All of Us project volunteers using traditional SOAP web services
- The exchange purpose is RESEARCH, so patient consent must be obtained via the workflow prior to the retrieval of clinical data.

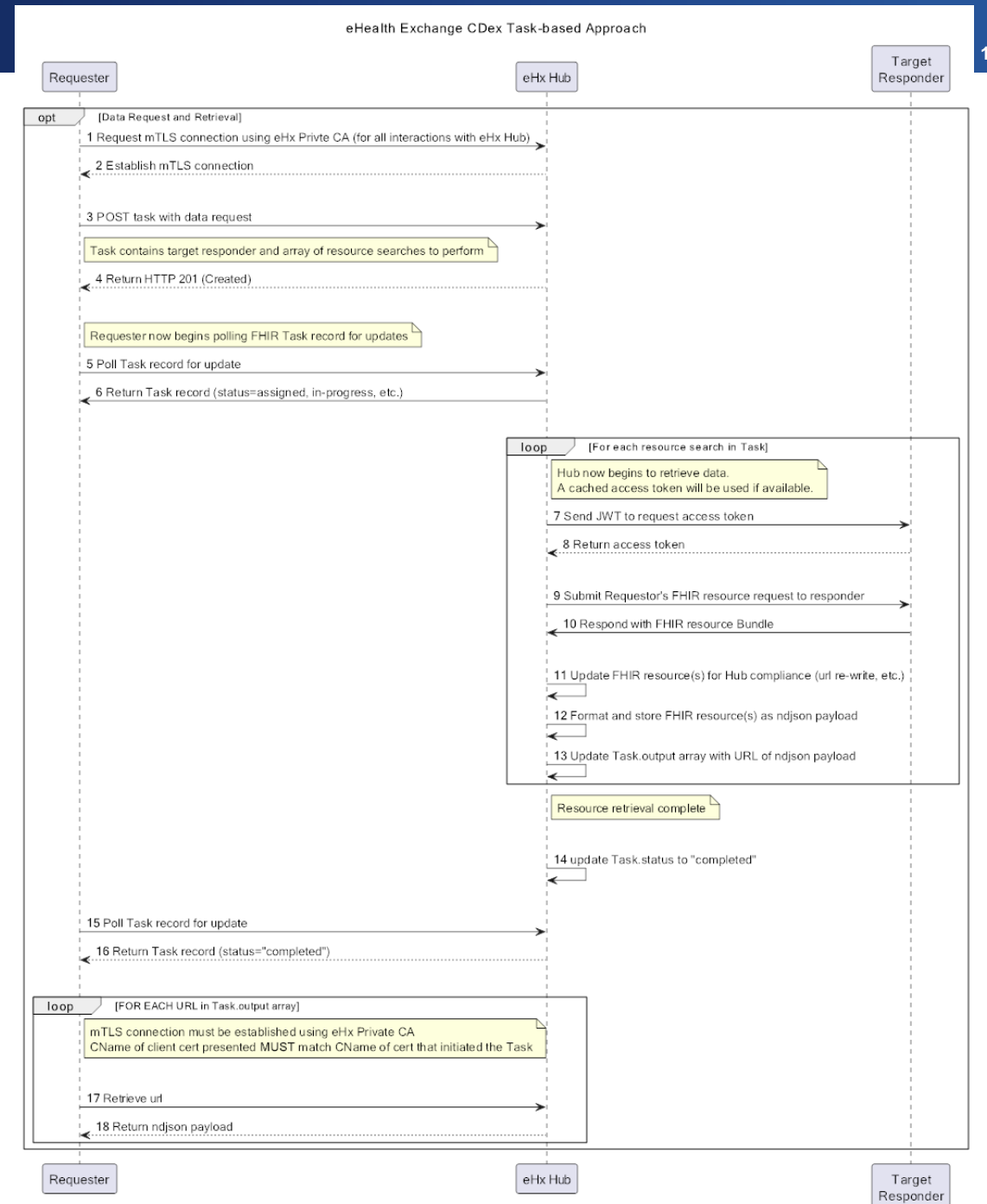
AIM 2

- Retrieve clinical data from NIH All of Us project volunteers using HL7 FHIR.
- Data retrieval will use a Task-based approach, based on DaVinci CDex.
- Leverages AIM 1 to provide a patient consent document as many EHR APIs for FHIR do not support a workflow to accept or obtain patient consent.

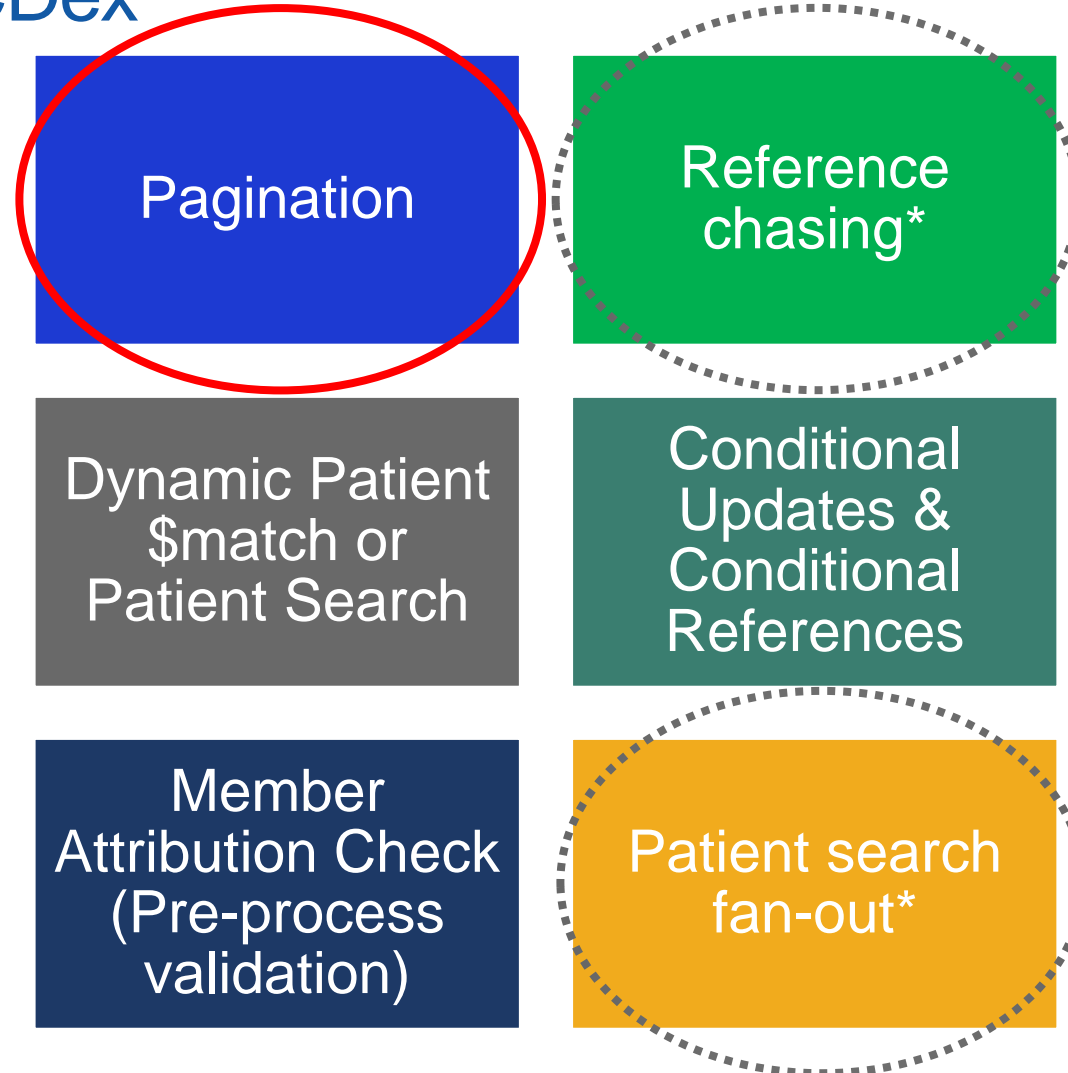


Task-based Approach

- The requestor submits a Task to the eHealth Exchange that specifies details of the data requirements
 - Identifies a responding provider
 - Identifies the FHIR resources to retrieve
- eHealth Exchange FHIR Hub retrieves all resources requested within the Task
- When Task status = “completed” requestor begins to retrieve related ndjson payload
- eHealth Exchange retains the ndjson FHIR resource data for 2 hours from the completion of the Task processing.
 - Polling interval for data retrieval is expected to be 1 hour or less.



Task-based Approach – Add-on Enhancements, compared to DaVinci CDex



* **COMING SOON** – not yet available

Task Based Exchange Enhancements

-- potential for using the patient FHIR fan-out approach

- Automatic pagination retrieval
- Support for additional workflows

Use Case	Target Responder known?	Patient FHIR Resource Id at Target known?
data-query	Yes	Yes
data-query-patient-match or data-query-patient-search	Yes	No
data-query-patient-fanout ¹	No	No
data-query-patient-fhirfanout ²	No	No

¹ leverages XCPD HRR on eHx network. If POU is other than Treatment – this would not be an effective fanout.

² leverages states of operation to identify fan-out list of FHIR responders. **COMING SOON** – not currently available.

Progress Report

- Once Sequoia testing is complete, the University of North Carolina Chapel Hill will make requests to 3 pilot participants on behalf of the NIH All of Us Project, which includes:
 - Cedars Sinai
 - Manifest MedEx
 - OCHIN
- Palantir is the technology provider for UNC Chapel Hill and has nearly completed the Sequoia testing for traditional web services.
- Once production clinical data is obtained from the 3 pilot participants via FHIR and traditional web services using C-CDA, it will be converted to OMOP for a content and quality review. C-CDA data will be compared to data obtained via FHIR.

Progress Report Continued

- Report to NIH All of Us on the project progress is due by February 28th.
- If project milestones are met, this will be the first production use of Task-based exchange on the eHealth Exchange network!

Hub Network Maintenance



Network Maintenance – Core Switches

**Sunday February 16th, 2025
6:00pm to 10:00pm EST**

The eHealth Exchange Hub environments were migrated to new core switches

What is a “Core Switch”?

- Network switches connect devices to allow them to communicate with each other within a network.
- Switch upgrades typically result in improved performance, stability, and scalability.

Key Points regarding the migration

- The migration did NOT result in a service interruption.
- The migration occurred within the predefined 4-hour maintenance window on the evening before a federal holiday - which is a period of lowest network volume.
- No changes were required by our participants (e.g., public IP addresses did not change).



Network Maintenance – Load Balancers

Saturday March 8th, 2025
5:00am to 9:00am EST

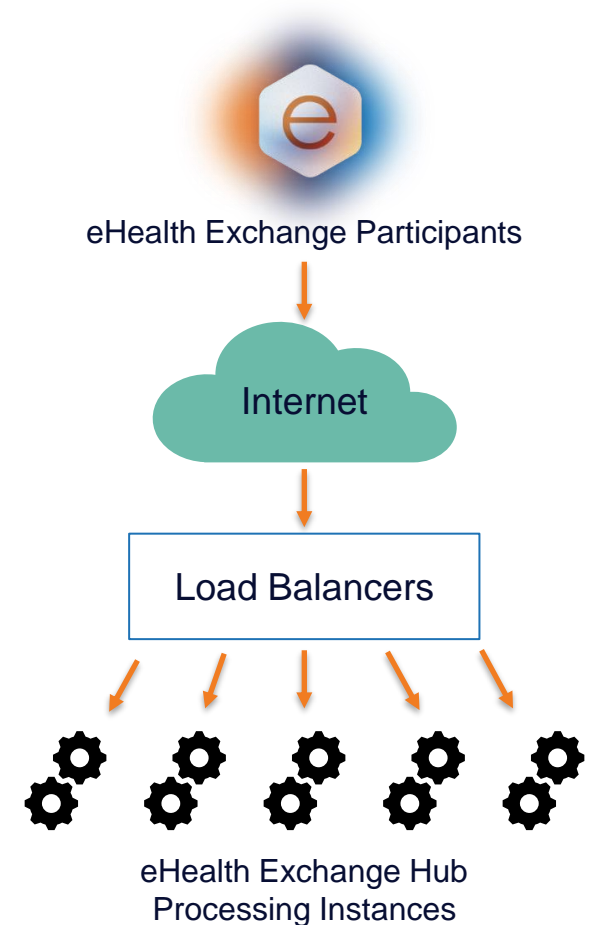
The eHealth Exchange Hub environments will be migrated to new network load balancers

What is a “Load Balancer”?

- Load Balancers allow us to distribute requests equally across multiple processing instances (aka “scale out” architecture).
- By taking advantage of multiple processing instances, we can address volume increases quickly and efficiently.

Key Points regarding the migration

- **The migration will require a service interruption.** Expectation is between 30 and 90 minutes.
- The migration will occur on a Saturday morning - which is period of lowest network volume.
- No changes will be required by our participants (e.g., public IP addresses will not change).



Maintenance Window Date/Time: TBD

Network Maintenance - Firewall

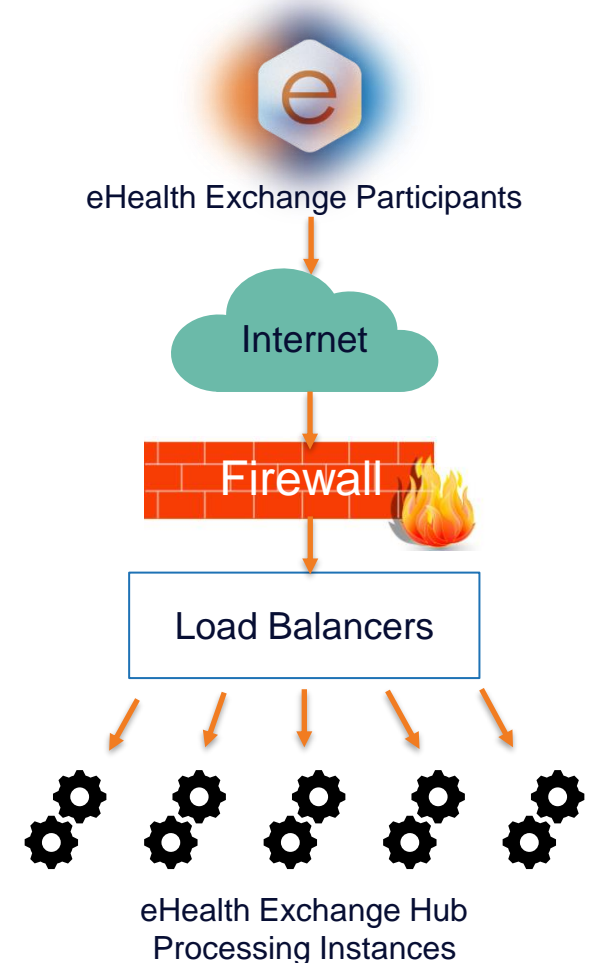
The eHealth Exchange Hub environments will be migrated to new firewall devices

What is a “Firewall”?

- A firewall is a network security device that monitors and controls incoming and outgoing network traffic based on predetermined security rules.
- Firewall upgrades typically result in enhanced security, improved performance, and future-proofing against evolving threats.

Key Points regarding the migration

- The migration will require a service interruption. Expectation is between 30 and 60 minutes.
- The migration will occur during a period of lowest network volume (typically a Saturday).
- No changes will be required by our participants (e.g., public IP addresses will not change).



Trust & Transparency Steps



Trust & Transparency Enhancement Steps



OPP #17 Sub-Participant Identification

Outreach to participants that are not in compliance with OPP-17 started this month. This OPP went into effect July 25, 2024. The policy requires participants to populate the eHealth Exchange directory with sub-participants and update messages to identify the entity/organization originating the request for data by November 25, 2024.

EPIC participants: Upgrading to the February 2025 release will enable compliance with OPP#17

HIMSS 2025



HIMSS 2025

- March 3-6, 2025
- The Venetian Convention & Expo Center, Caesars Forum, and Wynn Las Vegas
- **Booth #858**

Schedule a Meeting:

<https://ehealthexchange.org/events/himss25/>



Sessions

MONDAY, MARCH 3 | 9:05 AM – 10:10 AM

Venetian - Level 3 - Lido 3101 (Interoperability & HIE Forum)

Fireside Chat – The State of Interoperability & HIE Today: Breakthroughs and Barriers

Speakers: Lisa Bari (Civitas Networks for Health), Nancy Beavin (Medica), Jay Nakashima (eHealth Exchange), Michael Westover (Providence St. Joseph's Health)

TUESDAY, MARCH 4 | 3:00 PM

InterSystems Booth #2032

eHealth Exchange: Pioneering Nationwide Patient Data Exchange & Clinical Efficiency

Speakers: Randy Pallotta (InterSystems) and Jay Nakashima (eHealth Exchange)

Sessions

WEDNESDAY, MARCH 5 | 11:30AM

Exclusive Payer Lunch & Learn Event

Scaling Connectivity Among Key Stakeholders for Electronic Prior Authorization

Speakers: Jay Nakashima (eHealth Exchange), Doug Dietzman (BCBS Association) and Steven Berkow (InterSystems).

[**REQUEST AN INVITATION →**](#)

WEDNESDAY, MARCH 5 | 1:30PM

Interop + Smart Experience Pavillion – Exchange Theater

Networked FHIR: Scalable Exchange Between Payers, Providers and Public Health

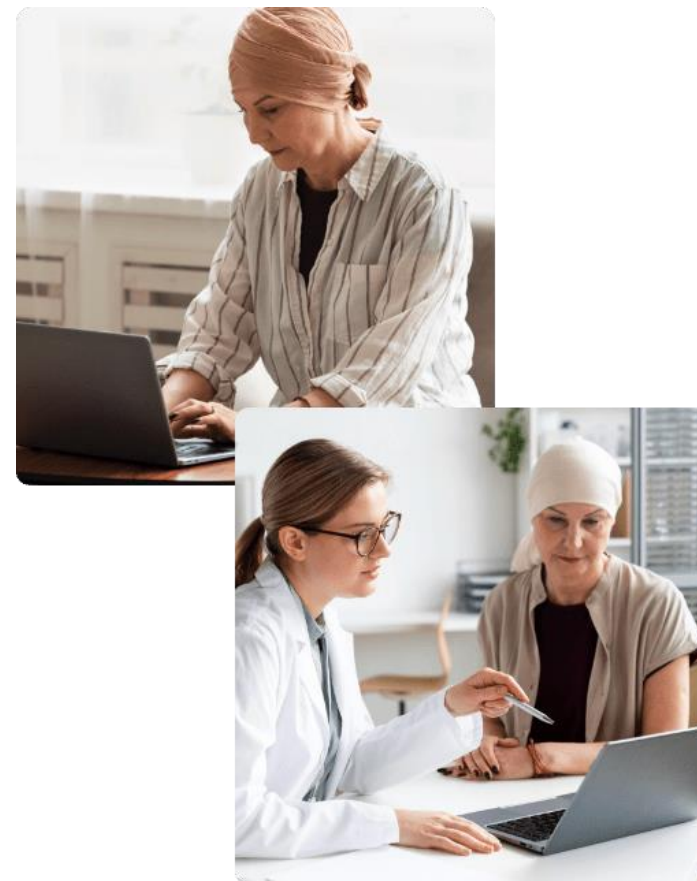
Presenters: Bill Howard (eHealth Exchange) and Keith Brick (Nordic Consulting Partners)

Watch a Demo

TEFCA Public Health Reporting: A Breast Cancer Story

We follow Peggy through her healthcare journey following occupational exposure to polychlorinated biphenyls (PCBs), through her diagnosis and treatment of breast cancer. Modern data exchange enables the patient's Primary Care Provider, Surgeon, Oncologist, and Public Health Case Investigators to share data seamlessly.

PARTICIPANTS: California Department of Public Health (CDPH) Cancer Registry, **Bridgehead Software** (Healthcare Data Management and Enterprise Imaging features), **Epic** (Beaker (Pathology Lab), Beacon (Oncology), and EpicCare Ambulatory features), **eHealth Exchange** (QHIN)



INTEROP AND SMART EXPERIENCE
Booth - C3318

[VIEW BOOTH LOCATION](#)

Let's Meet up in Booth #858



Want to block some time with us?

[Schedule a Meeting](#) →

Marketing Update


Website Updates

Two new webpages added

- Federal Agencies
- Individual Access

Pioneering new areas of health data exchange


Using Fast Healthcare Interoperability Resources (FHIR®) and other standards, we are transforming health data exchange across the country.



Federal Agencies

Exchange among federal agencies and with the private sector.


[LEARN MORE →](#)



Providers

Ensure information is available for care, but also for business operations and payment.


[LEARN MORE →](#)




Payers

Streamline prior authorizations and receive clinical documentation for payment.

[LEARN MORE →](#)




Public Health



HIEs

Extend your reach to exchange with other HIEs, and healthcare organizations outside your jurisdiction.

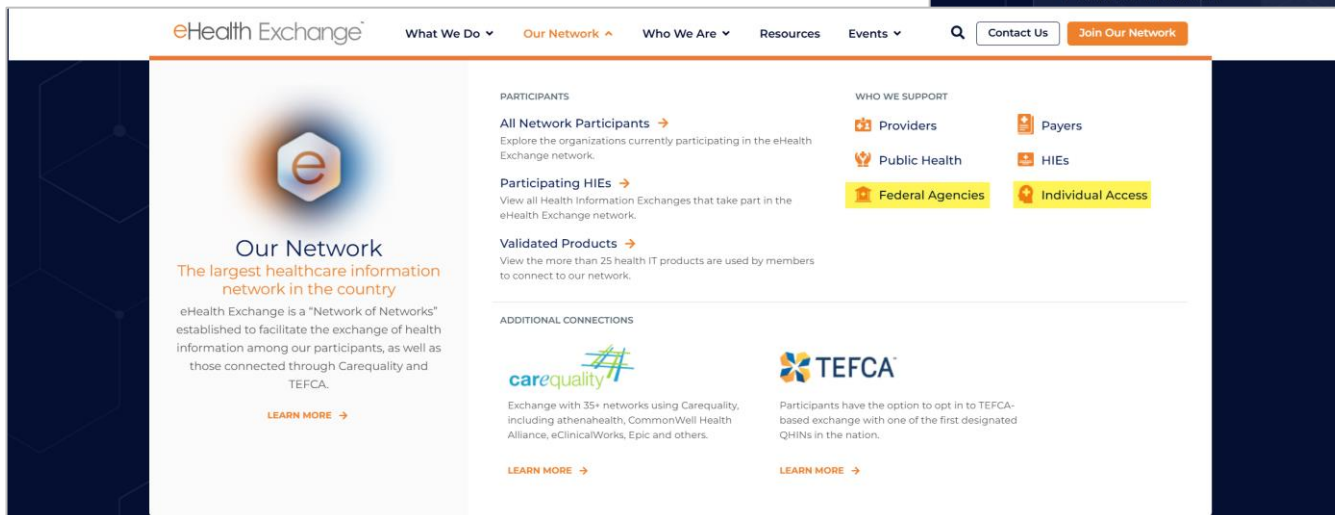
[LEARN MORE →](#)



Individual Access

Empower individuals with easy and transparent access to their health records.

[LEARN MORE →](#)



The screenshot shows the eHealth Exchange website homepage. The navigation bar includes: What We Do, Our Network, Who We Are, Resources, Events, Contact Us, and Join Our Network. The main content area features a large 'Our Network' section with the tagline 'The largest healthcare information network in the country'. Below this, there are sections for 'PARTICIPANTS' (All Network Participants, Participating HIEs, Validated Products) and 'WHO WE SUPPORT' (Providers, Public Health, Federal Agencies, Payers, HIEs, Individual Access). At the bottom, there are 'ADDITIONAL CONNECTIONS' for Carequality and TEFCA.

Board of Directors

Oversees financial, legal, risk, & strategic aspects of the corporation



Chair

Pam Matthews, RN
 East Tennessee Health
 Information Network
 Appointed by: Coordinating
 Committee through Dec '25



Vice Chair

John Kansky
 Indiana Health
 Information Network
 Appointed by: Coordinating
 Committee through Dec '27



Treasurer

**Patti Cuartas, DMSc,
 PA-C, FACHE, ACHIP**
 Mount Sinai Health System
 Appointed by: Coordinating
 Committee through Dec '26



Secretary

Lisa Bari
 Civitas Networks
 for Health
 Appointed by: Board
 through Dec '25



Paul Biondich, MD
 Indiana University School of
 Medicine & Regenstrief Institute
 Appointed by: Board
 through Dec '27



Bryant Karras, MD, FACMI
 Washington State
 Department of Health
 Appointed by: Board
 through Dec '27



Michael Marchant
 Sutter Health

Appointed by: Board
 through Dec '26



J.T. Lane
 Association of State &
 Territorial Health Officials

Appointed by: Board
 through Dec '26



Doug Dietzman
 Blue Cross Blue Shield
 Association

Appointed by: Board
 through Dec '27



Debbie Condrey
 The Sequoia Project

Ex Officio Appointed by
 Sequoia Project



Jay Nakashima
 eHealth Exchange

Ex Officio Appointed by
 the Bylaws

Save the Date – 2025 Annual Meeting

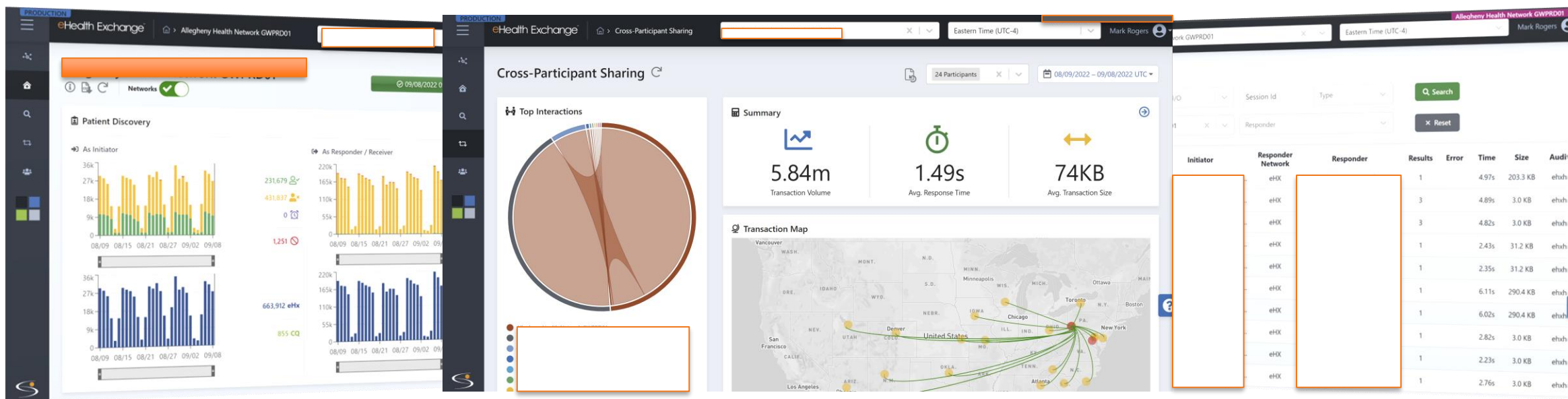


- Back to Nashville, TN
- November 18, 2025
- Co-located again with The Sequoia Project and Carequality following November 19-20, 2025
- Embassy Suites by Hilton Downtown Nashville

Information & Resources



Your Hub Dashboard – Your web portal providing interoperability insights.



- Identify transaction volume, response times, drill-down, & download.
- Who is querying your organization?
- Where are your clinicians searching?
- How much care occurs outside your organization?

Access Hub Dashboard: <https://insightsprod.ehealthexchange.org/#/hub>

Monthly Technical Work Group

Every 1st Thursday 4-5pm Eastern:

Typical Topics:

1. Technical Specifications
2. Testing
3. Hub Updates
4. Capacity planning [Final Thursday each month]

Request an invite: <https://ehealthexchange.org/technical-workgroup-form/>

Contacts for Your Organization

We want to ensure that we are reaching the right people at your organization with our communications.

- If you have had recent or past changes and are unsure if we have an updated list: email administrator@ehealthexchange.org requesting the Contact List Template to complete and return.
- The template asks name, title, phone number, email address, and what type of emails the resource should receive.
- This will assist eHealth Exchange and each Participant in knowing that the communication we send is received appropriately.

How might I obtain assistance?

What	Who	How
Certificates	DirectTrust Support	support@directtrust.zohodesk.com
Technical Support	Technical Support	servicedesk@hub.ehealthexchange.org
Testing Questions	Testing Team	testing@ehealthexchange.org
Questions about the DURSA, policy, or anything else!	Administrator	administrator@ehealthexchange.org

Visit: <https://ehealthexchange.org/contact-us/>

The logo for eHealth Exchange, featuring the word "eHealth Exchange" in a white sans-serif font. The "e" is lowercase and colored orange, while "Health Exchange" is in white. A small "TM" trademark symbol is located at the end of the word "Exchange". The logo is centered over a background of a hexagonal grid with orange and blue dots and lines.

eHealth Exchange™

Follow @eHealthExchange



ehealthexchange.org



eHealth Exchange™

BeMyQHIN.com