

# All Participant Call

September 2025



# Housekeeping Items



All lines have been muted to avoid background noise.



Type questions in Q&A section at any time.  
We'll open for questions after each agenda topic.



This meeting is being recorded and will be shared via email.

# Today's Topics

New Participants	Ashley Green
Hub Dashboard Updates	Jay Johnstone
My Directory Portal	Tiffanie Hickman
Carequality Directory Access	Mike McCune
HL7 Connectathon	Tiffanie Hickman
Coordinating Committee Final Elections	Jayme Piña
Annual Meeting – Agenda Released	Tina Feldmann
Marketing Update	Tina Feldmann
Information & Resources	Ashley Green
Q&A	Anyone

# New Participants

# Congratulations to our newest Participants!



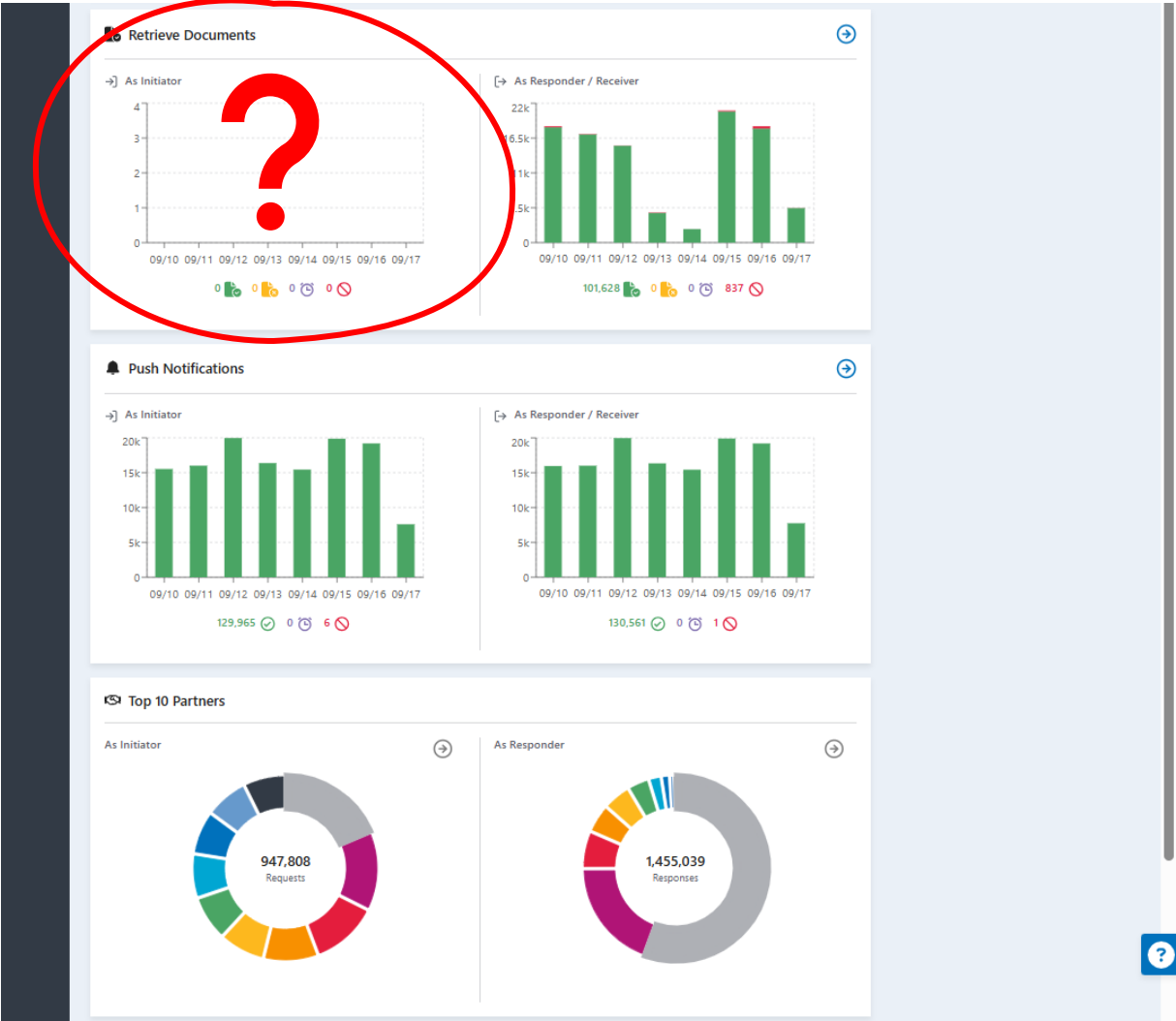
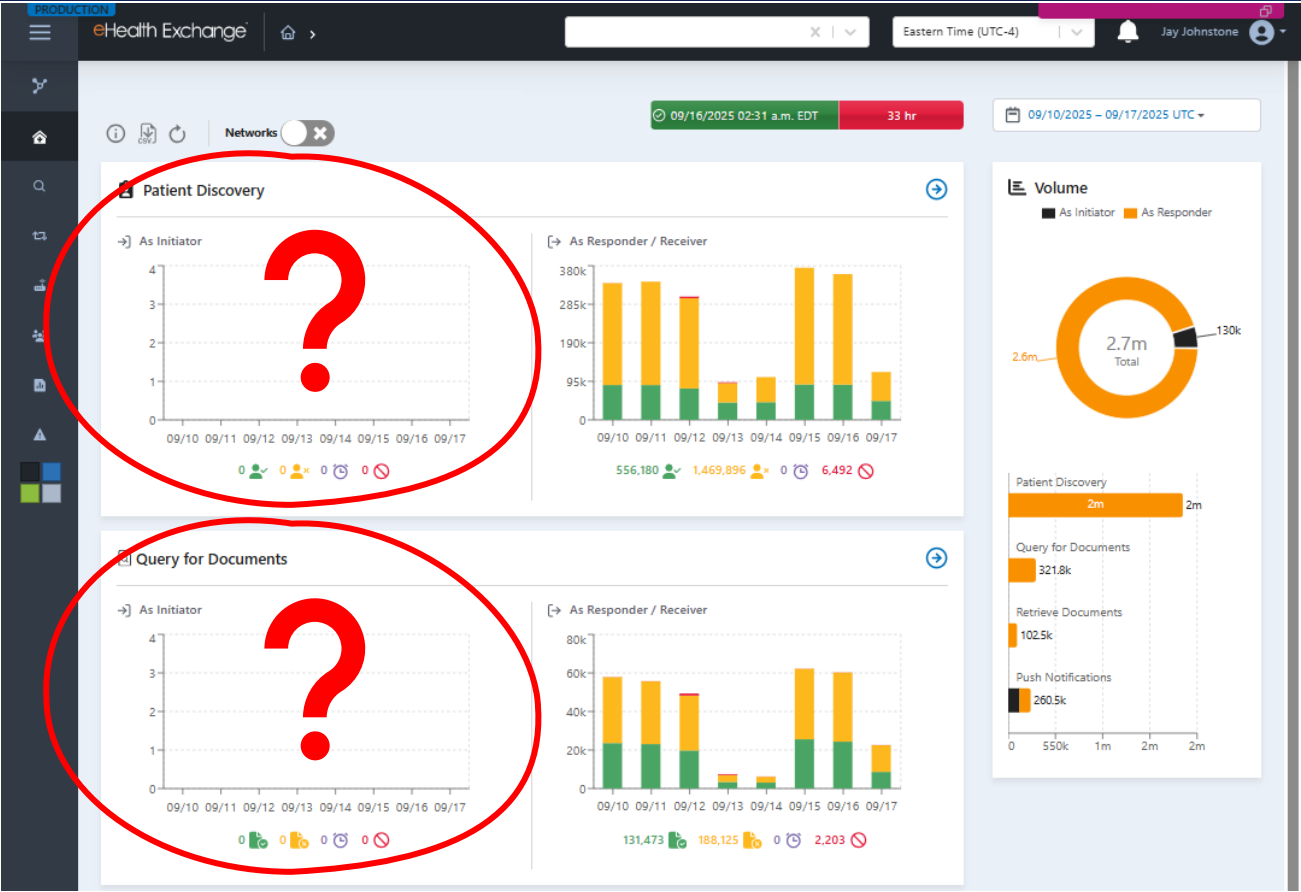
Banner Health is regarded and recognized as a top health system in the country for the clinical quality consistently provided to patients in our hospitals, nonprofit Banner Health is headquartered in Phoenix, Arizona, and operates 33 hospitals, including three academic medical centers and other related health entities and services in six states.

Banner Health's mission is: making health care easier, so life can be better. They are dedicated to strengthening our patient care by continuous focus on improving patient outcomes and service, development, training of an engaged workforce, use of innovative technologies, expansion of our facilities and services to meet community needs. To learn more, visit: <https://www.bannerhealth.com/about>

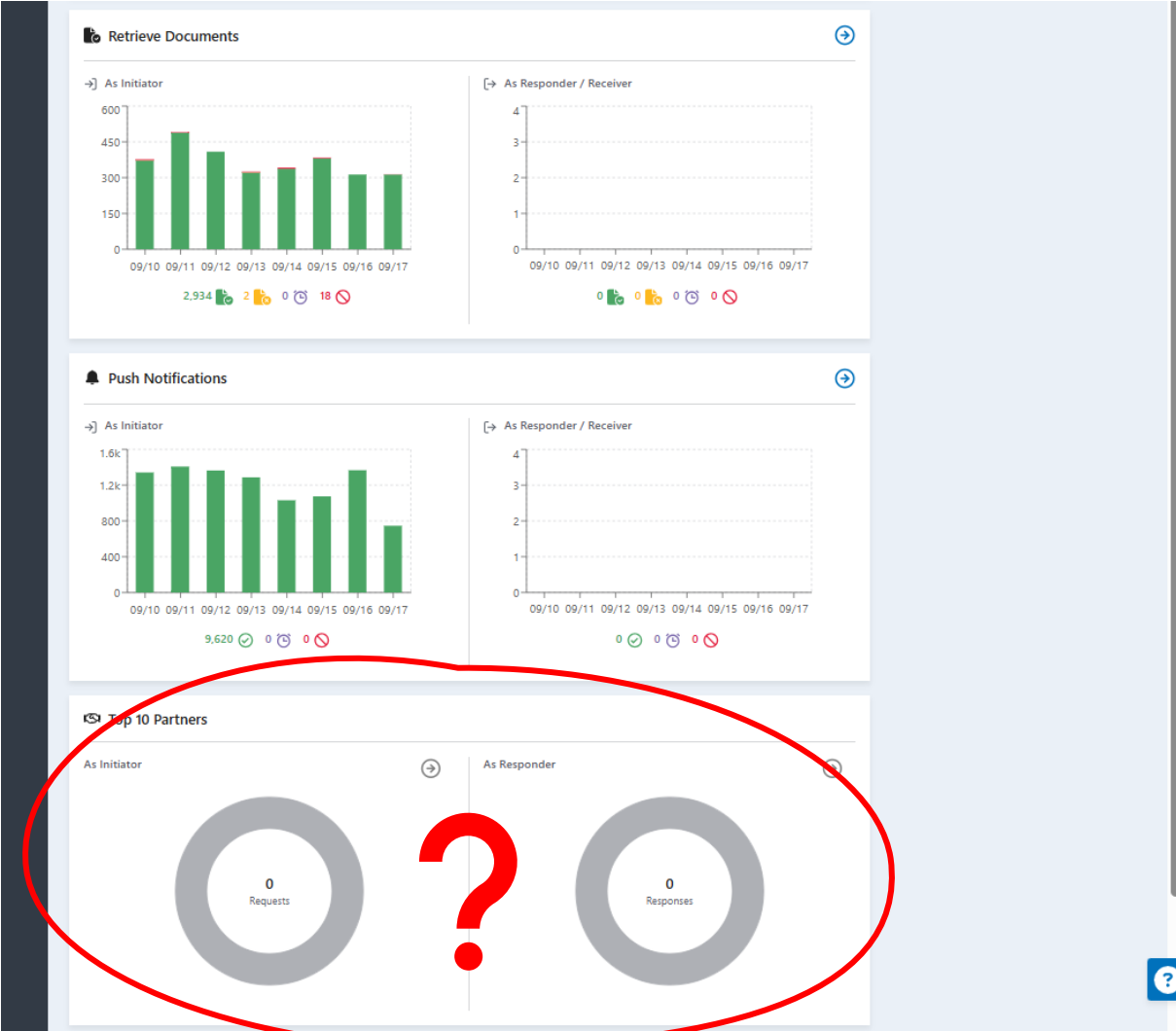
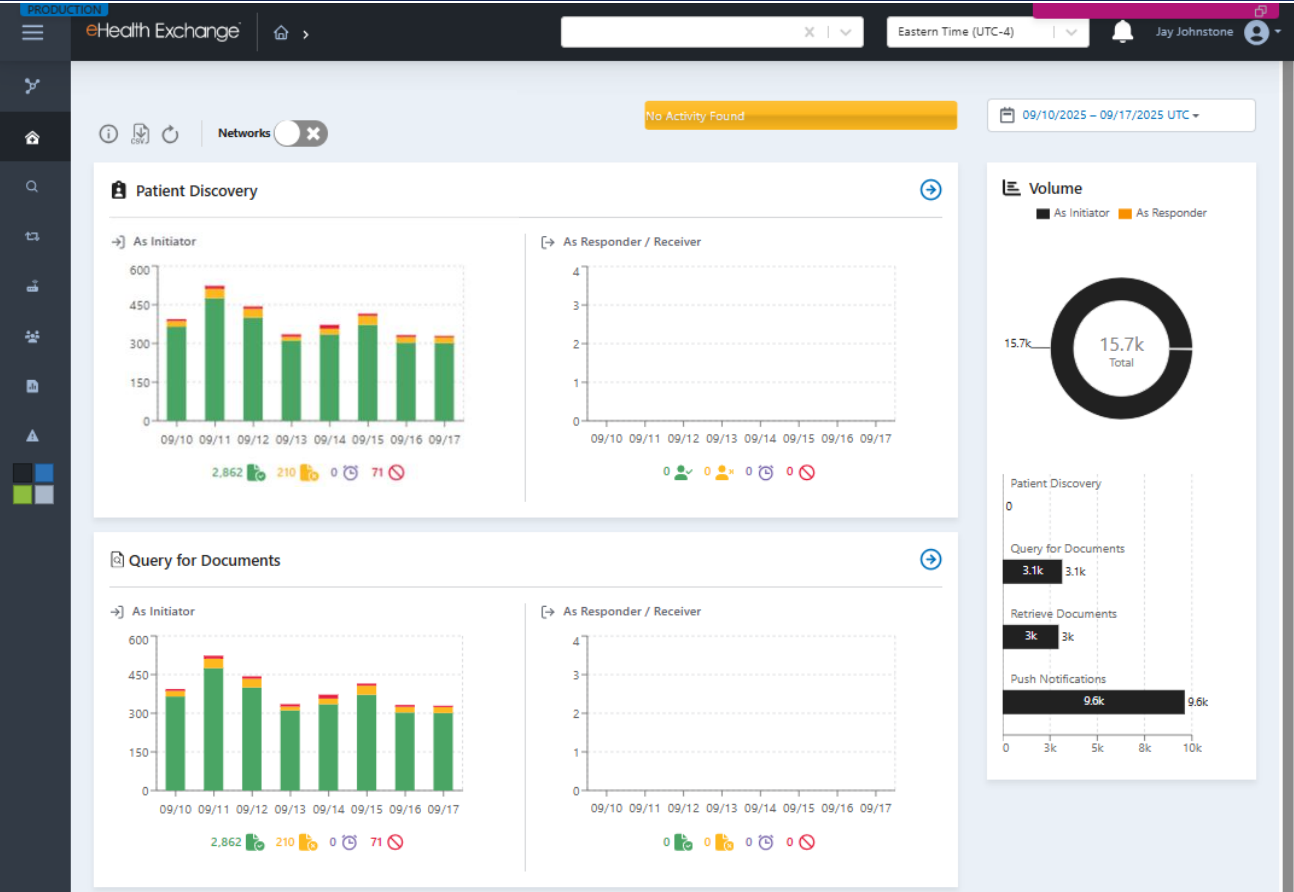
Committed to Improving Patient Care via Data Exchange

# Hub Dashboard Updates

## OPP 17 Reporting



Parent Participant

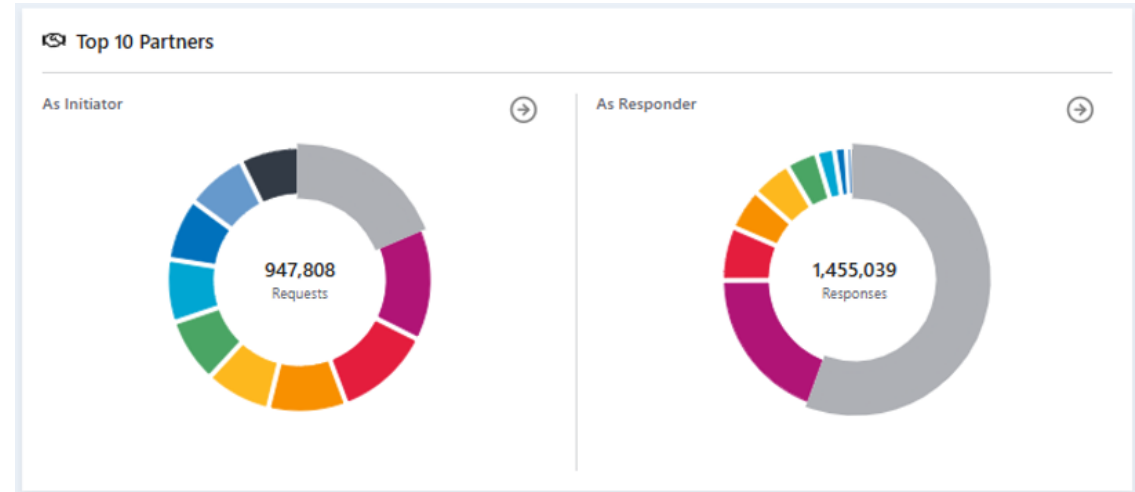


Subparticipant



# How do I keep this all straight?

- Top Partner Report
  - Aggregate up to the Parent Participant
- Everything Else
  - Listed under Participant Page of Ultimate Initiator



# What do I do now?

- Reach out to [administrator@ehealthexchange.org](mailto:administrator@ehealthexchange.org) if you do not have access to your Subparticipants on the Dashboard
- Future Development
  - Toggle to view either your Participant volume only OR the aggregation of all your Subparticipants
  - If you have access to a Participant on the Dashboard, you automatically have access to all Subparticipants

# My Directory Portal

# My Directory Portal

- The My Directory Portal is now being rolled out to Participants.
- The My Directory Portal can help you manage sub-participant identification to support OPP #17.
- Key Highlights
  - The import feature makes it easy to upload several sub-participants at one time.
  - Participants can update contacts, addresses, and endpoints.
  - Run reports and review data.
- Email eHealth Exchange Admin if you want access to the My Directory Portal.

# Carequality Directory Access



## New Capability: Access to the Carequality Directory

- Carequality subscribers which are connected to Carequality through the eHealth Exchange will be provided access to “clones” (copies) of the Carequality directories.
- FHIR API access will be granted upon request. If your organization is a Carequality subscriber, email [administrator@ehealthexchange.org](mailto:administrator@ehealthexchange.org) so that your API key can be updated to access the cloned Carequality directories.
- Which Carequality directories will be accessible?
  - The eHealth Exchange will provide cloned directories of the Carequality STAGE and PROD directories.

## New Capability: Access to the Carequality Directory

How are the Carequality directories used?

- Carequality STAGE: Used for testing between Carequality organizations such as Implementers and Connections. For example, Carequality STAGE is being used for delegation of authority (DOA) testing which is ongoing now.
- Carequality PROD: Used by other Carequality organizations to connect to eHealth Exchange Carequality subscribers. Used by Carequality subscribers to make connections to Carequality via the Hub.

## New Capability: Access to the Carequality Directory

What will the cloned Carequality directories provide?

### FHIR API Functionality:

- Using the FHIR API, the initial release will not have any support for custom FHIR operations such as \$hub-aware for Hub endpoints. You will need to derive Hub endpoints to establish a connection. Reference the Carequality spreadsheet for the format of Hub endpoints.
- Support for \$hub-aware and possibly additional custom operation support is planned for sprint development in the next 2 to 4 weeks.
- Please email [administrator@ehealthexchange.org](mailto:administrator@ehealthexchange.org) if you have any specific custom FHIR operation requests for the cloned Carequality directories.



# New Capability: Access to the Carequality Directory

## FHIR API Functionality Continued – possible custom operations

In addition to \$hub-aware, what are the possible custom operations for the cloned Carequality directories?

- **\$org-hierarchy**
  - **Level:** Organization instance
  - **Parameters:** None
  - **Description:** Returns the hierarchy rooted at the requested instance.
- **\$search-near**
  - **Level:** Organization type
  - **Parameters:** address (required), radius (required), type (optional), and endpoint:missing (optional)
  - **Description:** Returns organizations containing locations that are within a specified radius of one or more specified addresses. See the following example, which searches for eHx participants with endpoints that are within ten miles of the White House.

# New Capability: Access to the Carequality Directory

FHIR API Functionality Continued – possible custom operations:

- **\$aggregate-identifiers**
  - **Level:** Organization type or instance
  - **Parameters:** None
  - **Description:** Aggregates OIDs for one hierarchy (rooted at the requested instance, if called at the instance level) or for all hierarchies (if called at the type level). Here, *OID* refers to an HCID or AAID that appears either in an organization's identifiers or in its contained endpoints' identifiers. Organizations containing no endpoints are ignored except for the purpose of defining hierarchies. Aggregation is applied both “vertically” and “horizontally.” I.e., OIDs are deduplicated to the highest level both within and across hierarchies. Horizontal deduplication (between organizations not related as ancestor/descendant) is considered exceptional and produces a log warning.

# New Capability: Access to the Carequality Directory

## FHIR API Functionality Continued – possible custom operations:

- **\$aggregate-states**
  - **Level:** Organization type or instance
  - **Parameters:** None
  - **Description:**
    - Aggregation of states of operation to the participant level is done with a custom operation called \$aggregate-states. For each implementer directory entry, you may execute this operation. For example, /fhir/Organization/<Implementer OID>/\$aggregate-states would aggregate the states of operation for the implementer entry specified by <Implementer OID>.
    - Without using \$aggregate-states, the directory will not provide an aggregation for states of operation at the implementer level or any other level.
    - Aggregation is done using a combination of the organization address-state (Organization.address.state) for each entry and any Organization.stateofoperation entries. The latter are considered “manual entries”. For example, if a Connection (CC) has an address-state of VA and an Organization.stateofoperation value of TX, then both VA and TX will be bubbled up to the Implementer level, when using the \$aggregate-states operation.

# New Capability: Access to the Carequality Directory via the Directory Portal

## Directory Portal Access to the Carequality Directory – **COMING SOON!**

- Carequality directory access using the directory portal should be added in the next 2 to 4 weeks. Functionality will be added in phases:
  - Phase 1: Carequality subscribers will be able to export a complete copy of the Carequality directory in CSV format. Additional formats of JSON and XML may be provided later.
  - Phase 2: Carequality subscribers can browse Carequality directory entries (read only) using the portal.
- Only participants that have a subscription to Carequality (according to the eHx directory) will be granted access to the Carequality directory under the portal.
- For those that have access to Carequality, their access is view/read only with no create or update rights, even for directory entries that would be managed by that organization under the eHx directory.

# New Capability: Access to the Carequality Directory via the Directory Portal

Under the directory portal, what will the Carequality directory CSV export provide in addition to the current eHx directory CSV export?

- Connection type: Implementer or Connection
- The Implementer associated with each entry
- Up to two contact names and emails.
- Last updated timestamp (when was a Carequality entry last updated?)
- The OID value for the partOf element. partOf establishes directory hierarchy.
- Endpoint inheritance – If endpoints are not provided for the directory entry, which directory entry are they inherited from? To determine inheritance, navigate up the directory using partOf until you find the first directory entry that provides endpoints. Use the OID of the directory entry that provides endpoints in the cell of this column. If endpoints are provided by the directory entry, then the cell value should be “Defined”.
- Determine if the Carequality directory entry is also a member of the eHealth Exchange. Using the OID of the Carequality entry, check to see if this OID is active in the eHx directory. If it is in the eHx directory, then indicate that the CQ entry is also a member of eHx.

**NOTE: The CVS export information listed above may be delivered in phases.**

# New Capability: Access to the Carequality Directory via the Directory Portal

Obtaining access to the directory portal and/or Carequality directory export under the directory portal:

- If you don't have access to the directory portal and you would like to be among the first to be granted access, email [administrator@ehealthexchange.org](mailto:administrator@ehealthexchange.org).
- If you already have access to the directory portal **and** you are a Carequality subscriber and would like to export the Carequality directory using the portal, then email [administrator@ehealthexchange.org](mailto:administrator@ehealthexchange.org)

# HL7 Connectathon



# HL7 FHIR Connectathon

- eHealth Exchange attended the HL7 FHIR Connectathon in Pittsburgh, PA on September 13<sup>th</sup> and 14<sup>th</sup>.
- Da Vinci use cases were tested:
  - Tested CRD workflows with Intersystems, Community Health Plan of Washington, Cognizant via SoF Proxy
  - Tested DTR workflows with Intersystems, Cognizant via SoF Proxy
- Future testing planned with the following use cases:
  - Planned testing of CRD, DTR, and PAS with Oracle, MEDITECH via SoF Proxy
  - Planned FHIR data validation processes and reviewed technologies available to enable such as process



# HL7 FHIR Connectathon-Public Health

- Using the DIBBS Query Connector, three of our public health department pilots successfully used the FHIR Fan-Out for Patient Discovery and Task-Based Query Exchange. Washington, Oregon, and New York.
- In this screenshot, Camila Lopez is a test patient with data in two servers. Her data from her time in Texas is stored on the Open Epic server, and her Massachusetts data is from the eHX HAPI server. The Query Connector allows the Case Investigator to request data from each data source (which we can process as Child Tasks for the investigation queries):

The screenshot displays the 'Query Connector' web application. At the top, there's a dark header with the 'Query Connector' logo and a 'Run a query' button. Below the header, a progress bar shows four steps: 'Enter patient info', 'Select patient' (which is the active step), 'Select query', and 'View patient record'. A breadcrumb trail includes a link to 'Return to Enter patient info'. The main content area is titled '2 of 4 Select a patient' and states 'The following record(s) match.' Below this is a table with two rows of patient data. The table has columns for NAME, DOB, CONTACT, ADDRESS, MRN, and ACTIONS. Both rows list 'Camila Maria Lopez' with DOB '1987-09-12'. The first row's contact info is for Texas (Garland), and the second row's is for Massachusetts (Cambridge). Each row has a 'Select patient' link in the ACTIONS column. At the bottom, there's a footer with the CDC logo and text: 'Centers for Disease Control and Prevention. For more information about this solution, send us an email at [dibbs@cdc.gov](mailto:dibbs@cdc.gov).' A URL 'https://queryconnector.dev/query#' is also visible.

NAME	DOB	CONTACT	ADDRESS	MRN	ACTIONS
Camila Maria Lopez	1987-09-12	work: +1 469-888-8888 mobile: +1 469-469-4321 knixontestemail@epic.com	3268 West Johnson St. Apt 117 GARLAND, TX 75043		<a href="#">Select patient</a>
Camila Maria Lopez	1987-09-12	work: +1 469-888-8888 mobile: +1 469-469-4321 knixontestemail@epic.com	3268 West Johnson St. Apt 117 CAMBRIDGE, MA 02114		<a href="#">Select patient</a>

# Coordinating Committee Elections

## Background

- The Coordinating Committee manages the Network, not to be confused with the eHealth Exchange Board that manages the Company running the network. The Coordinating Committee is granted formal authority under the DURSA to oversee and facilitate continued development, implementation, and operation of the eHealth Exchange Network. The Coordinating Committee does have 3 members on the Board at the same time.

## Expectations of Coordinating Committee Members

- The primary purpose of the Coordinating Committee is to govern the eHealth Exchange and provide strategic direction to assure continued growth and innovation.

# It's Official: Your 2025 CC Seats are Filled!

## Welcome Back



**Matt Eisenberg, MD**  
Stanford Health Care



**Paul Matthews**  
OCHIN

## Welcome



**Gary Parker**  
Alabama One Health Record



**Ray Duncan, MD**  
Cedar Sinai Health Systems

# Annual Meeting

## Keynote Speaker

We are honored to welcome CMS Deputy Administrator and COO, Kim Brandt, as the keynote speaker for the 2025 eHealth Exchange Annual Meeting.

Ms. Brandt will share insights on CMS's recently announced Make Health Tech Great Again initiative, including the CMS Interoperability Framework, strategies to advance payer-provider data exchange through new rules, efforts to align priorities across HHS, and the responsible use of AI in healthcare.





## FEATURED SPEAKERS

We're proud to showcase an exceptional lineup of thought leaders and innovators who are shaping the future of health information exchange, interoperability, and public health.



**ERICA OLENSKI**

VP at Finn Partners

Founder & Executive  
Director of August's  
Artists



**ABDEL MAHMOUD, MD**

Founder & CEO

Anterior



**KIM BRANDT**

Deputy Administrator  
and COO

Centers of Medicare &  
Medicaid Services



**RYAN HOWELLS**

Principal  
Leavitt Partners



**KAT MCDAVITT**

President & Founding  
Partner, Innsena

Host & Founder, Health  
Tech Talk Show

[Press release](#) dropped today.

Full Agenda available [here](#).

Full Speaker list available [here](#).

## 2025 Annual Meeting

- November 18, 2025
- Co-located again with The Sequoia Project and Carequality following November 19-20, 2025
- Embassy Suites by Hilton Downtown Nashville

NOW OPEN

Registration and Hotel Booking  
[2025 Annual Meeting - eHealth Exchange](#)



Time is Running Out!

**Early Bird Pricing is  
Ending Soon**

This year's Annual Meeting, hosted in Nashville, TN, is **FREE** for all eHealth Exchange Participants. The meeting is also open to the public, who can take advantage of the early bird rate.

**Early Bird Price**

Ends 9/19/25

**\$300**



# How you can help

## Complete Your Registration

- FREE for participants

## Invite Others

- Social Media: Use Join me graphic to create a post inviting others to join you in Nashville
- Send personal emails



## Include these Tags/Hashtags/Links

@ehealthexchange

#eHx2025

Link to event page: <https://ehealthexchange.org/annual-meeting>

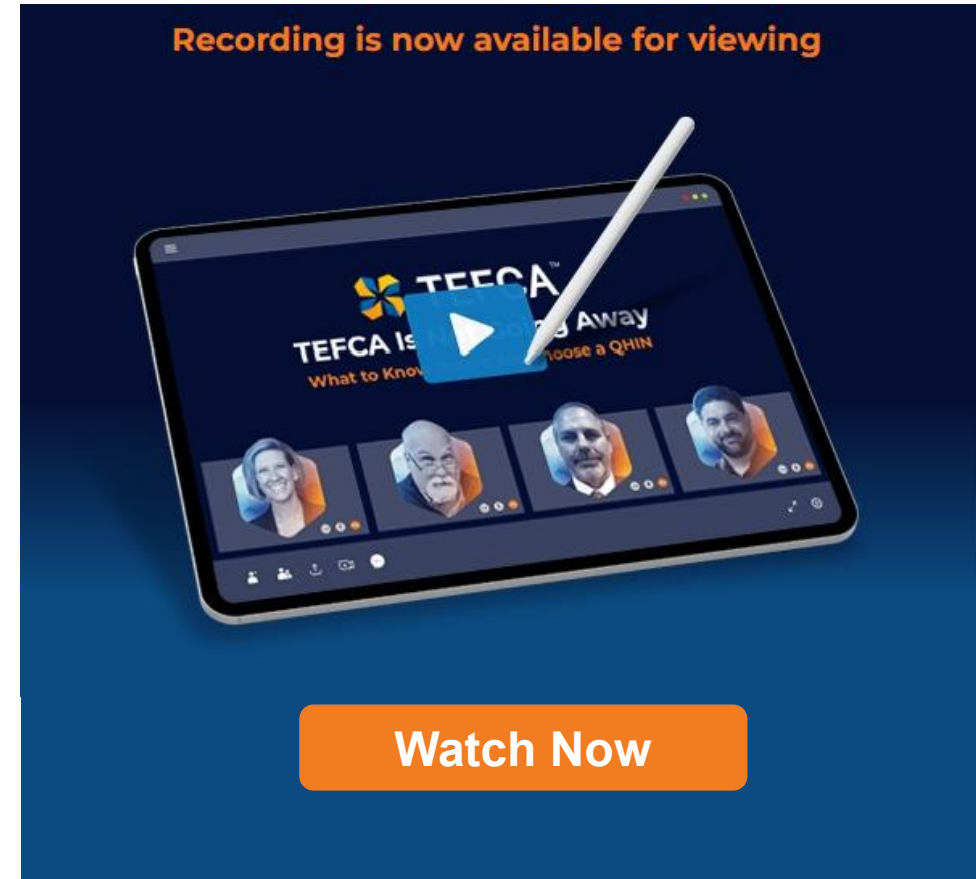
# Marketing Update

## WEBINAR

### TEFCA Is Not Going Away What to Know Before You Choose a QHIN

Whether you were able to join us live or not, we're pleased to share that the **recording is now available** for you to watch at your convenience.

A special **thank you** goes out to our panelists for sharing their insights and experiences.



Link to Recording: [TEFCA QHIN Webinar - eHealth Exchange](#)

## Upcoming Reoccurring Webinars



### eHealth Exchange TEFCA Updates Webinar

**September 23<sup>rd</sup> | 3:30-4:30 PM ET**



### eHealth Exchange Technical Workgroup

**October 2<sup>nd</sup> | 4-5:00 PM**



### eHealth Exchange All Participant Call

**October 16<sup>th</sup> | 1-2PM ET**

**November Meeting Cancelled**

# Upcoming Conferences

## September



### Civitas Networks for Health Annual Conference

Sept 28-30 | Anaheim, CA

## October



### NCQA Health Innovation Summit

October 10-13 | San Diego, CA

## November



### eHealth Exchange Annual Meeting

November 18 | Nashville, TN

# eHealth Exchange Monthly Newsletter

- Distributed monthly, the last week of the month
- Automatically gets sent to primary, project and operations contacts for our participants
- Available to all others by subscribing from our [News & Insights webpage](#)

[Subscribe to Newsletter](#)

## eHealth Edition

MONTHLY NEWSLETTER

MAY 2025



### NEWS

#### eHealth Exchange Honored with KLAS Points of Light Award for Advancing Automated Prior Authorization via Networked FHIR Service



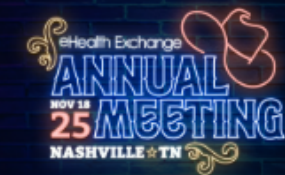
eHealth Exchange once again has been recognized by KLAS Research with a prestigious Points of Light Award for its groundbreaking work in health data interoperability. The recognition stems from a collaborative case study titled "Automating Prior Authorization via a Networked FHIR Service," which showcases a scalable solution to one of healthcare's most burdensome administrative processes.

[Read Press Release](#)

### 2025 ANNUAL MEETING

#### Hotel Block Open

We will be back in Tennessee at the Embassy Suites by Hilton Downtown Nashville for the eHealth Exchange Annual Meeting November 18, 2025.

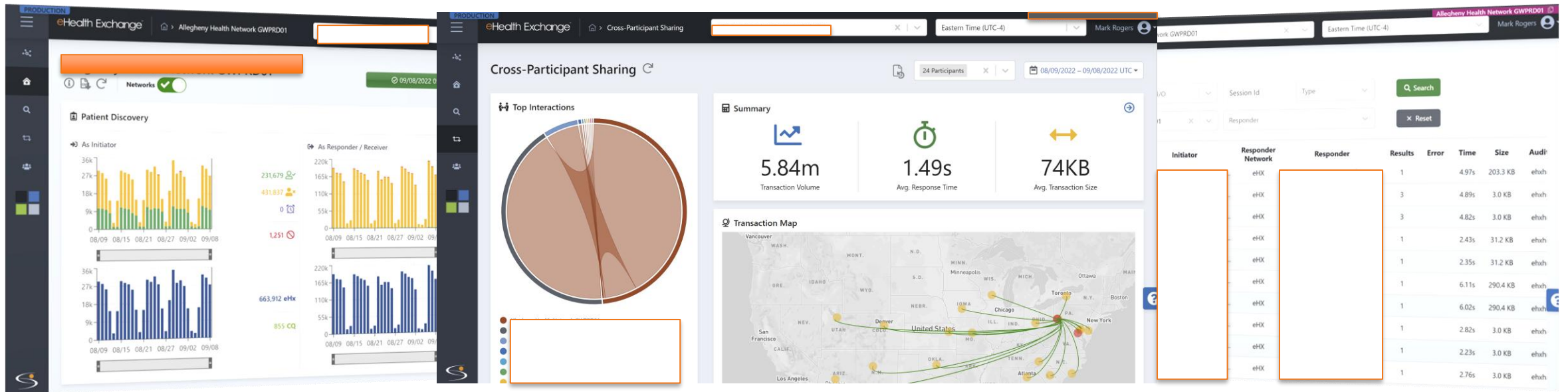




# Information & Resources



# Your Hub Dashboard – Your web portal providing interoperability insights.



- Identify transaction volume, response times, drill-down, & download.
- Who is querying your organization?
- Where are your clinicians searching?
- How much care occurs outside your organization?

Access Hub Dashboard: <https://insightsprod.ehealthexchange.org/#/hub>



# Monthly Technical Work Group

**Every 1<sup>st</sup> Thursday 4-5pm Eastern:**

**Typical Topics:**

1. Technical Specifications
2. Testing
3. Hub Updates
4. Capacity planning [Final Thursday each month]

Request an invite: <https://ehealthexchange.org/technical-workgroup-form/>

# Contacts for Your Organization

We want to ensure that we are reaching the right people at your organization with our communications.

- If you have had recent or past changes and are unsure if we have an updated list: email [administrator@ehealthexchange.org](mailto:administrator@ehealthexchange.org) requesting the Contact List Template to complete and return.
- The template asks name, title, phone number, email address, and what type of emails the resource should receive.
- This will assist eHealth Exchange and each Participant in knowing that the communication we send is received appropriately.

# How might I obtain assistance?

What	Who	How
Certificates	DirectTrust Support	<a href="mailto:support@directtrust.zohodesk.com">support@directtrust.zohodesk.com</a>
Technical Support	Technical Support	<a href="mailto:servicedesk@hub.ehealthexchange.org">servicedesk@hub.ehealthexchange.org</a>
Testing Questions	Testing Team	<a href="mailto:testing@ehealthexchange.org">testing@ehealthexchange.org</a>
Questions about the DURSA, policy, or anything else!	Administrator	<a href="mailto:administrator@ehealthexchange.org">administrator@ehealthexchange.org</a>

Visit: <https://ehealthexchange.org/contact-us/>



eHealth Exchange™

Follow @eHealthExchange



[ehealthexchange.org](http://ehealthexchange.org)